



System Factbook

2016-2017



The Arkansas State University System serves 23,995 students as the second-largest higher education system in Arkansas.

The Arkansas State University System 2016-2017 Factbook

Any questions concerning
material contained in this
book should be directed to:

The Office of Institutional Effectiveness
Arkansas State University
P.O. Box 790
State University, Arkansas 72467

Telephone: (870)972-3027
Fax: (870)972-3683
E-mail: asuirp@AState.edu

2016-2017 A-State System Factbook cover designed by the
staff of the Office of Publications & Creative Services.

Factbooks produced by
The Office of Institutional Effectiveness
are available in electronic format on our web site at
<http://www.AState.edu/irp>.



Table of Contents

Forward	4
A Quick Reference (Arkansas State University System)	5

ORGANIZATION

Arkansas State University System	9
Arkansas State University	10
Arkansas State University-Beebe	11
Arkansas State University-Mountain Home	12
Arkansas State University-Newport	13
Arkansas State University Mid-South	14
Organizational Structure, ASU System	15
Organizational Structure, A-State	16
Academic Affairs & Research, A-State	17
Finance & Administration, A-State	18
Student Affairs, A-State	19
University Advancement, A-State	20
Institutional Classifications (SREB & Carnegie Foundation)	21

ACADEMIC PROGRAMS

Undergraduate Academic Programs (A-State)	25
Graduate Academic Programs (A-State)	26
Academic Programs (Other ASU System Campuses)	27
Degrees & Certificates Awarded Summary	28
Degrees Awarded by College & Department (A-State)	29
Degrees Awarded by Undergraduate Program (A-State)	30
Degrees Awarded by Graduate Program (A-State)	31

STUDENTS

System Enrollment Summary	35
Total Enrollment	
A-State	36
ASU-Beebe	37
ASU-Mountain Home	38
ASU-Newport	39
ASU Mid-South	40
Geographic Origin of Total Enrollment (A-State)	41
Geographic Origin of International Students (A-State)	42
Enrollment & SCH by Legal Residence (A-State)	43
Enrollment by College & Department (A-State)	44

Undergraduate Enrollment by Degree Program (A-State)	45
Graduate Enrollment by Degree Program (A-State)	46
Enrollment by College & Career (A-State)	47
SCH Production by College & Career (A-State)	48
Full-Time Equivalent Enrollment (A-State)	49
SCH Production (A-State)	50
New Student Applications (A-State)	51
First-Time Freshmen (A-State)	52
Academic Preparation - Admission Test Scores (A-State)	53
Academic Preparation - Remediation (A-State)	54
Academic Progress - Retention Rates (A-State)	55
Academic Progress - Graduation Rates (A-State)	56
Undergraduates (A-State)	57
Undergraduate Transfer Students (A-State)	58
Graduates (A-State)	59
Alumni Statistics (A-State)	60
Student Athletes (A-State)	61
Athletic Administration (A-State)	62
Dean B. Ellis Library (A-State)	63
Student Costs - Tuition & Required Fees	64
Student Costs - Residence Life (A-State)	65
Financial Aid (A-State)	66
Arkansas State University Donors (A-State)	67

EMPLOYEES

System Employee Summary	71
Full-Time Instructional Faculty (A-State)	72
Full-Time Instructional Faculty Statistics (A-State)	73
Full-Time Instructional Faculty Salaries (A-State)	74
Full-Time Staff Statistics (A-State)	75

Forward

Welcome to the **2016-2017 Arkansas State University System Factbook!** The ASU System Factbook is a publication produced by the Office of Institutional Effectiveness that outlines enrollment, faculty and staff data, and other comprehensive information for the Arkansas State University campuses at Jonesboro, Beebe, Mountain Home, Newport and West Memphis. The ASU System Factbook is produced annually and is intended to provide answers to questions that are frequently asked by the administration, faculty, staff, students, alumni and other university constituents.

The definitions and guidelines used to compile this information are provided by the Integrated Postsecondary Education Data System (IPEDS), the Arkansas Department of Higher Education (ADHE), the Office for Civil Rights (OCR) and the National Collegiate Athletic Association (NCAA). It is important to note that the information in this factbook may differ from data reported by the Office of Institutional Effectiveness to federal, state and regional agencies due to differences in reporting guidelines, reporting definitions, and the timing of when the information was prepared.

In order to make information more readily available to all constituents, the ASU System Factbook is available in PDF format on the Institutional Effectiveness web site. You can reach our web site through the Arkansas State University Home Page, or you can go to our site directly at

<http://www.AState.edu/irp>

A comprehensive document of this magnitude requires the assistance of a number of people on the various ASU campuses. Many thanks to all who helped make the **2016-2017 Arkansas State University System Factbook** a successful reality. A special thanks goes out to the Office of Publications and Creative Services' staff for their contribution in the 2016-2017 ASU System Factbook cover and tab inserts. Should you have any questions, comments or corrections regarding this document, please contact the Office of Institutional Effectiveness. (P.O. Box 790, State University, Arkansas, 72467; Phone: (870)972-3027; Fax: (870)972-3683; E-mail: asuirp@Astate.edu)

A Quick Reference

Arkansas State University System

Number of Students Fall 2016

Arkansas State University System

Enrollment	23,995
Full-Time-Equivalent	16,299

Undergraduate

Jonesboro (69.9%)	9,839
Beebe*	3,989
Mountain Home	1,367
Newport*	2,718
Mid-South	1,836

Graduate

Jonesboro (30.1%)	4,246
-------------------------	-------

Male

Jonesboro (39.9%)	5,625
Beebe (43.1%)	1,721
Mountain Home (42.2%)	577
Newport (39.8%)	1,081
Mid-South (41.6%)	763

Female

Jonesboro (60.1%)	8,460
Beebe (56.9%)	2,268
Mountain Home (57.8%)	790
Newport (60.2%)	1,637
Mid-South (58.4%)	1,073

Ethnic Minorities (non-Caucasian, excludes Unknown & International)

Jonesboro (18.6%)	2,620
Beebe (17.8%)	709
Mountain Home (7.9%)	108
Newport (25.8%)	700
Mid-South (64.9%)	1,191

Age

	Under 25	25 & Older
Jonesboro.....	8,627	5,458
Beebe	3,042	947
Mountain Home.....	780	587
Newport.....	2,240	478
Mid-South	1,380	456

Enrollment from Arkansas

Jonesboro (74.0%)	10,416
Beebe (98.2%)	3,917
Mountain Home (93.0%)	1,271
Newport (97.9%)	2,661
Mid-South (90.5%)	1,661

Enrollment from Out-of-State

Jonesboro (20.0%)	2,818
Beebe (1.6%)	62
Mountain Home (6.9%)	94
Newport (1.9%)	51
Mid-South (9.5%)	175

Enrollment from Foreign Countries

Jonesboro (6.0%)	851
Beebe (0.3%)	10
Mountain Home (0.1%)	2
Newport (0.2%)	6
Mid-South (0.0%)	0

Academic Awards & Degrees

Fiscal Year 2015-2016

Certificate

Jonesboro (Graduate Certificates).....	23
Beebe	1,021
Mountain Home	330
Newport	569
Mid-South	436

Associate

Jonesboro	512
Beebe	767
Mountain Home	241
Newport	238
Mid-South	127

Bachelor's

Jonesboro	1,713
-----------------	-------

Graduate

Jonesboro	1,739
-----------------	-------

Tuition & Required Fees

Fall 2016

Based on 15 Hour Load for Undergraduate Students and 9 Hour Load for Graduate Students for the Fall 2016 Semester

Undergraduate Resident

Jonesboro	\$4,100
Beebe	1,740
Mountain Home	1,740
Newport	1,665
Mid-South	1,940

Undergraduate Nonresident

Jonesboro	\$7,130
Beebe	2,805
Mountain Home	2,730
Newport	2,550
Mid-South	2,540

Graduate

Resident	\$2,959
Nonresident	5,272

Full-Time Employees

Fall 2016

Campuses	Faculty	Staff
Jonesboro**	502	1,101
Beebe	118	183
Mountain Home	44	67
Newport	73	93
Mid-South	46	102

Facilities

Fiscal Year 2015-2016

Campuses	# Acres	# Buildings
Jonesboro	1,477	158
Beebe	706	69
Mountain Home	130	7
Newport	214	24
Mid-South	92	14

*NOTE: Beebe's enrollment includes Heber Springs and Searcy. Newport's data includes the Commercial Driving Technical Certificate Program, the ASU Technical Center at Marked Tree and the Jonesboro Technical Center.

**NOTE: Jonesboro's faculty includes instructional and research faculty.

Information Source: The Office of Institutional Effectiveness: web address: www.AState.edu/irp; email address: asuipr@AState.edu



Organization

Office of Institutional Effectiveness

Arkansas State University System

BOARD OF TRUSTEES

The Trustees of Arkansas State University serve as a board of management and control of Arkansas State University campuses in Jonesboro, Beebe, Mountain Home, Newport, Mid-South and Heber Springs.

In this capacity, the Trustees hire the Arkansas State University president to serve as the Chief Executive Officer, approve the curriculum of the institution, annually approve an operating budget, establish policies for the efficient operation of the institution, and approve those matters which require participation of the governing board of the University. Trustees' duties include: appointing, supporting, and assessing the performance of the president; maintaining the clarity of the mission of Arkansas State University; approving long-range plans; approving the educational program; ensuring the well-being of the students, faculty and staff; ensuring strong financial management; approving significant faculty and staff appointments and dismissals; ensuring adequate resources for quality programs; preserving institutional autonomy; interpreting the campus to the community; and interpreting the needs of society to the campus.

The governor of Arkansas appoints members of the Board of Trustees for a period of five years. The Senate of the General Assembly must confirm each appointment.

BOARD OF TRUSTEES W/TERM ENDING

Mr. Howard Slinkard, Chair; Rogers - 2016
 Mr. Ron Rhodes, Vice Chair; Cherokee Village - 2017
 Dr. Tim Langford, Secretary; Little Rock - 2018
 Mr. Niel Crowson, Jonesboro - 2019
 Ms. Stacy Crawford, Jonesboro - 2020

UNIVERSITY SYSTEM LOGO



**PRESIDENT OF
 ARKANSAS STATE UNIVERSITY SYSTEM**
 Dr. Charles L. Welch

INTERIM CHANCELLOR OF A-STATE
 Dr. Doug Whitlock

CHANCELLOR OF ASU-BEEBE
 Dr. Karla Fisher

CHANCELLOR OF ASU-MOUNTAIN HOME
 Dr. Robin Myers

CHANCELLOR OF ASU-NEWPORT
 Dr. Sandra Massey

CHANCELLOR OF ASU MID-SOUTH
 Dr. Debra West

VISION AND MISSION STATEMENTS

Vision: The Arkansas State University System will create better educated citizens prepared for a global and technological society by providing quality undergraduate and graduate education, useful research and dedicated public service.

Mission: *The mission of the Arkansas State University System is to contribute to the educational, cultural, and economic advancement of Arkansas by providing quality general undergraduate education and specialized programs leading to certificate, associate, baccalaureate, masters, professional and doctoral degrees; by encouraging the pursuit of research, scholarly inquiry and creative activity; and by bringing these intellectual resources together to develop the economy of the state and the education of its citizens throughout their lives.*

Each component of the Arkansas State University System will be characterized by:

- A supportive learning environment; personal development, leadership and service opportunities; and facilities, technologies and support necessary to meet the needs of students, faculty and staff;
- Racial, ethnic, gender and cultural diversity in the faculty, staff and student body, supported by practices and programs that embody the ideals of an open, democratic, and global society;
- Instructional technologies, student support services, and on-line and distance education to advance the purposes of teaching and learning;
- A commitment to sharing human, physical, information and other resources among system components, and with state agencies, schools and higher education institutions, to expand and enhance programs and services available to the citizens of Arkansas.

Arkansas State University

Dr. Doug Whitlock, Interim Chancellor since 2016

Arkansas State University Mission Statement:
Arkansas State University educates leaders, enhances intellectual growth and enriches lives.

Arkansas State University's main campus in Jonesboro is located in Northeast Arkansas. Jonesboro is the fifth largest populace city in the state and has a trade, cultural and medical center for a market area of more than a half million people.

HISTORY

Arkansas State University (A-State) was established in 1909 as a state agriculture school. The institution opened as a vocational high school in 1910 and changed to State Agricultural and Mechanical College in 1925. Authority to extend the curriculum, offer senior college work and grant degrees was given to the institution by the legislature in 1925. Senior college work was initiated in 1930, and the first bachelor's degrees were granted in 1931. In 1933, the legislature changed the name of the college to Arkansas State College. Master's degree graduate programs were initiated in 1955 and Doctorate degree programs were added in 1999. Arkansas State College was granted university status in January 1967.

Since 1909, the institution that evolved into A-State has been served by thirteen presidents/chancellors.

Previous presidents/chancellors and their terms of service were:

- ◆ Mr. V.C. Kays, 1909-43; ◆ Dr. Horace Thompson, 1943-45;
- ◆ Dr. William J. Edens, 1946-51; ◆ Dr. Carl R. Reng, 1951-75;
- ◆ Dr. Ross Pritchard, 1975-78; ◆ Mr. Carl Whillock, 1978-80;
- ◆ Mr. Ray Thornton, 1980-84; ◆ Dr. Eugene Smith, 1984-92;
- ◆ Dr. John N. Mangieri, 1992-94; ◆ Dr. Leslie Wyatt, 1995-2006;
- ◆ Dr. Robert L. Potts, 2006-2010; ◆ Dr. G. Daniel Howard, 2010-2012 (Interim) ◆ Dr. Tim Hudson, 2012-2016.
- ◆ Dr. Lynita Cooksey, 2016 (Acting)

VICE CHANCELLOR PROVOST OF A-STATE

Dr. Lynita Cooksey – Academic Affairs & Research

VICE CHANCELLORS OF A-STATE

Dr. Len T. Frey – Finance & Administration

Dr. Rick Stripling – Student Affairs

Dr. Jason Penry – University Advancement

OFFICE OF RECRUITMENT

P.O. Box 1800

State University, AR 72467

ADMISSIONS, RECORDS & REGISTRATION

P.O. Box 1570

State University, AR 72467

OFFICE OF INTERNATIONAL PROGRAMS

P.O. Box 2230

State University, AR 72467

WEB SITE

AState.edu

PROGRAMS OF STUDY

Arkansas State University offers programs at the doctoral, specialist, master's, bachelor's and associate degree levels through the colleges of Agriculture & Technology, Business, Education & Behavioral Science, Engineering, Liberal Arts & Communications, Nursing & Health Professions, Sciences & Mathematics and University College. Additionally, A-State offers degree programs at Beebe, Mountain Home, Newport, West Memphis and online.

ACCREDITATION

In order to maintain the highest quality in all its programs, A-State actively seeks evaluation from accreditation visits and program reviews to monitor academic quality. Academic programs are accredited by the regional accrediting agency for all programs. Individual programs are accredited by specialized accrediting agencies for the respective programs.

Accrediting Organizations: Higher Learning Commission of the North Central Association; AACSB International; Accreditation Commission for Education in Nursing; American Chemical Society; Accrediting Council on Education in Journalism and Mass Communications; Commission on Accreditation of Allied Health Education Programs; Commission on Accreditation in Physical Therapy Education; Commission on Accreditation of Athletic Training Education; Council for the Accreditation of Counseling and Related Education Programs; Council for the Accreditation of Educator Preparation; Council on Academic Accreditation in Audiology and Speech-Language Pathology; Council on Accreditation of Nurse Anesthesia; Council on Rehabilitation Education; Council on Social Work Education; Engineering Accreditation Commission of the Accreditation Board for Engineering and Technology, Inc.; Joint Review Committee on Education in Diagnostic Medical Sonography; Joint Review Committee on Education in Nuclear Medicine Technology; Joint Review Committee on Education in Radiologic Technology; National Accrediting Agency for Clinical Laboratory Sciences; National Alliance of Concurrent Enrollment; National Association of Schools of Art and Design; National Association of Schools of Music; National Association of Schools of Public Affairs and Administration; National Association of School Psychologists; National Association of Schools of Theatre; National Council for Accreditation of Teacher Education; National League for Nursing Accrediting Commission; Network of International Business Schools

Arkansas State University-Beebe

Dr. Karla Fisher, Chancellor since 2016

Arkansas State University-Beebe Mission Statement:
Transforming lives through quality learning experiences.

HISTORY

As the oldest two-year college in the state, ASU-Beebe has paved the way in making a quality education affordable and attainable for Central Arkansas students. In 1927, ASU-Beebe was founded as Junior Agricultural School of Central Arkansas after Beebe citizens donated 300 acres of land to start the school. In 1931, the name was changed to Junior Agricultural College of Central Arkansas, and a college curriculum was established. The college has been affiliated with the Arkansas State University System since 1955.

ASU-Beebe has established a strong reputation of providing quality, affordable instruction and service programs to its surrounding communities. Located 31 miles north of Little Rock, it is the tenth largest college in the state and has an enrollment greater than four of Arkansas' public four-year colleges. It is the only Arkansas two-year college with residence halls, and has recently built new suite-style residence halls to better serve student needs.

ASU-Beebe has a tremendous positive impact on the economy of Central Arkansas, contributing over \$316 million annually to the regional economy through its operations, capital spending and workforce comprised of former students. ASU-Beebe has maintained its commitment to the development of top-notch learning facilities throughout the years by expanding and renovating facilities on each of the campuses.

CORE VALUES

While strengthening our practice of being student-centered, we will guide our internal conduct as well as our relationships with those we serve by applying the values of integrity, diversity and global awareness, excellence, access and student-centered (IDEAS).

INTEGRITY

We value integrity by having honesty and truthfulness in the consistency of our actions, methods and principles.

DIVERSITY AND GLOBAL AWARENESS

We value diversity and global awareness by assisting our students and employees to increase their exposure to and understanding of our diverse local, state and global societies and their impact on cultural and economic well-being.

EXCELLENCE

We value continuous improvement and strive for excellence by accomplishing our tasks with distinction.

ACCESS

We value access to educational opportunities by providing multiple locations, diverse programs and delivery methods.

STUDENT-CENTERED

We value a student centered culture by focusing on the needs, abilities, interests and education of our students as our highest priority.

PROGRAMS OF STUDY

ASU-Beebe has established itself as a center of academic excellence, continually having one of the highest retention and graduation rates among Arkansas two-year colleges. In fact, the Aspen Institute ranked ASU-Beebe in the top 10% twice. It offers high-quality Associate of Arts in Liberal Arts degrees with the option of choosing coursework from the fine arts, the sciences, the social sciences, education, health sciences, mathematics, foreign languages, English and history. In addition, ASU-Beebe has the only Associate of Fine Arts in Music program available at any two-year college in the state. ASU-Beebe offers small class sizes, great access to faculty and full-time tutoring for students. It also strives to promote campus safety and has been ranked as the safest college campus in the nation by StateUniversity.com.

ASU-Beebe is a leader in the state for vocational and technical education. In addition to Associate of Applied Science, Associate of Arts, Associate of Arts in Teaching, Associate of Fine Arts, Associate of General Studies and Associate of Science in Health Sciences degrees, Computer Information Systems, Agriculture, Business or Criminal Justice. ASU-Beebe offers certificates of proficiency and one-year technical certificates that are designed to prepare students to meet the needs of today's rapidly evolving industries. Through its advanced technology division, programs are available with emphasis on the fast-changing needs of a modern industrial society. Advanced technology programs offered include computer systems and networking technology, computer-aided drafting/design, industrial technology, general technology, John Deere agriculture equipment technology, electronics technology and medical laboratory technology. In 2007, ASU-Beebe founded the state's only veterinary technician training program, providing the opportunity for students to obtain an Associate of Applied Science in Veterinary Technology degree. In addition to its credit students, ASU-Beebe serves approximately 3,600 continuing education or workforce development students each year.

ARKANSAS STATE UNIVERSITY-BEEBE

P.O. Box 1000
Beebe, AR 72012-1000
(501)882-3600
www.asub.edu

ACCREDITATION

ASU-Beebe is accredited by the Higher Learning Commission of the North Central Association of Colleges and Schools and by the National Accrediting Agency for Clinical Laboratory Sciences. In addition, among other accreditations, the Veterinary Technology and concurrent enrollment programs are accredited, and ASU-Beebe has the only nationally-accredited Pharmacy Technician program in the state. ASU-Beebe is certified by the Arkansas State Board of Nursing, the Arkansas Office of Emergency Medical Services and the National Automotive Technicians Education Foundation.

Arkansas State University-Mountain Home



Dr. Robin Myers, Chancellor since 2012

Arkansas State University-Mountain Home Mission Statement:
The mission of ASUMH is to LEAD through educational opportunities.

*Lifelong Learning,
Enhanced Quality of Life,
Academic Accessibility, and
Diverse Experiences*

HISTORY

In 1991, the Arkansas General Assembly created technical colleges from the Baxter County Vocational-Technical Center and the North Arkansas Community/Technical College Center in Mountain Home. Mountain Home Technical College was established on July 1, 1991. In 1992, the Mountain Home Technical College agreed to seek affiliation with Arkansas State University to form a sister campus. On July 1, 1993, Mountain Home Technical College became Arkansas State University Mountain Home Technical College.

Arkansas State University-Mountain Home (ASUMH) was established on July 1, 1995 due to the commitment of the residents of Baxter County and the cooperation of the Department of Higher Education and Arkansas State University in Jonesboro.

ASUMH has an open door admissions policy. This policy is designed to enhance access to educational opportunities. Standards of quality are maintained and students are required to remove deficiencies before entering certain programs or courses.

Nestled in the beautiful Ozark Mountains, 156 miles north of Little Rock, the environment at ASUMH encourages free expression, leadership and innovation. Small class size means personal attention and support from instructors. Additionally, the construction of a new campus accommodating 1,200 students offers an even more appealing setting for students to pursue higher education.

PROGRAMS OF STUDY

An Associate of Arts is offered for those students needing maximum flexibility in the selection of a course of study to meet individual employment and educational needs. It can be designed to meet the General Education requirements for those individuals planning to transfer to a four-year institution in order to complete a bachelor's degree. Associates of Applied Science are offered in Crime Scene Investigation, Criminal Justice, Funeral Science, Information Systems Technology, Law Enforcement Administration, Management, Nursing, Paramedic Technology, Respiratory Care and Welding Technology. Also offered is an Associate of Arts in Teaching, Associate of General Studies and an Associate of Science in Business, Criminal Justice and Early Childhood Education. Technical Certificates are offered in Crime Scene Investigation, Electronics Technology, Funeral Directing, General Business, Health Professions, Information Systems Technology, Law Enforcement Administration, Paramedic Technology, Practical Nursing and Welding Technology.

A-State and ASUMH have formed a partnership to offer various bachelor's and graduate degree programs through the Center for Advanced Studies on the Mountain Home campus. The bachelor's degrees are offered by building on the existing Associate of Arts degree offered at ASUMH. The Center currently offers bachelor's degrees in Agricultural Business, Business Administration, Clinical Lab Science, Criminology, Early Childhood Education, Management, Middle-Level Education, Nursing and Technology. Master's degrees are offered in Business Administration, Curriculum and Instruction, and Educational Leadership.

ACCREDITATION

ASUMH is accredited by the Higher Learning Commission of the North Central Association (Thirty North LaSalle, Suite 2400, Chicago, IL 60602), the American Board of Funeral Service Education, and the Arkansas State Board of Nursing.

ARKANSAS STATE UNIVERSITY-MOUNTAIN HOME

1600 S. College Street
Mountain Home, AR 72653
(870)508-6100
www.asumh.edu

ASU-Mountain Home Campus



Arkansas State University-Newport

Dr. Sandra Massey, Chancellor since 2013

Arkansas State University-Newport Mission Statement:

*To Provide Integrity of Programs and Services;
Affordable Life Long Learning;
and Enhanced Quality of Life
In the Diverse Community We Serve*

HISTORY

Arkansas State University-Newport (ASUN) has been in continuous operation since August 1975. Prior to being named ASU-Newport, the campus was known as White River Vocational Technical School. In 1991, the Arkansas Legislature passed Act 1244 which merged White River Vocational Technical School with ASU-Beebe. In 1992, it became ASU-Beebe/Newport and in 1997 became ASU-Newport. The 83rd General Assembly of the Arkansas Legislature passed Act 297 into law on February 19, 2001, creating a separate budget appropriation for ASUN effective July 1, 2001. The Higher Learning Commission of the North Central Accreditation Association of Colleges and Schools (NCA) granted the college initial accreditation for stand-alone status for five years in August 2002. In April 2007, the college received ten year accreditation status from the NCA. In March 2001, the state legislature approved the merger of Delta Technical Institute with Arkansas State University to produce the ASU Technical Center (ASUTC). In 2008, ASUTC was aligned with ASUN.

PROGRAMS OF STUDY

Programs and services are designed to assist students (both traditional and nontraditional) in determining and achieving their educational, personal and career goals.

These programs and services include associate degrees, certificates, continuing education, workforce development, adult education, ESL and opportunities through the Career Pathways program.

The college offers transfer degree programs, including an online degree (AA in Liberal Arts), an AA degree in Teaching (including Middle School and P-4 grade options) and Computer Information Systems, applied science degrees (including RN and General Technology with an emphasis in such areas as High Voltage Lineman Technology), technical certificates in such areas as Practical Nursing, Business Technology, High Voltage Lineman Technology, and Diesel Mechanics and certificates of proficiency in such diverse areas as CNA and Truck Driver Training (the largest commercial driver training program in the state).

Partnering with business and industry and working to meet the local, county and regional needs of its students and employers, ASU-Newport is truly a "Great Place to Start."

ARKANSAS STATE UNIVERSITY-NEWPORT

7648 Victory Blvd.
Newport, AR 72112
(870)512-7800
www.asun.edu

ACCREDITATION

ASUN is accredited by the Higher Learning Commission of the North Central Association of Colleges and Schools (Thirty North LaSalle, Suite 2400, Chicago, IL 60602) and the Arkansas State Board of Nursing, the National Automotive Technicians Education Foundation, The Arkansas State Board of Cosmetology, the Arkansas Department of Health Section of EMS and Trauma Systems, and the Committee on Accreditation of Educational Programs for the Emergency Medical Services Professions.

ASU-Newport's
Student/Community Center



Arkansas State University Mid-South

Dr. Debra West, Chancellor since 2015

Arkansas State University Mid-South Mission Statement:

ASU Mid-South is a public two-year institution of higher education with an open-door admission policy, serving Crittenden County, Arkansas, and the surrounding areas with a comprehensive educational program. The College is committed to economic development in the Arkansas Delta through the provision of high quality, affordable, and convenient learning opportunities and services consistent with identified student, community, and regional needs.

To meet these needs, the College provides quality academic and support programs, personnel, technology, administrative services, and facilities necessary to respond in a timely and effective manner.

HISTORY

The evolution of ASU Mid-South began in 1991 following the Arkansas Legislature's approval of Act 1244. The legislation provided for the conversion of fourteen of Arkansas' vocational-technical schools into technical colleges, branches of four-year institutions, or community colleges with the additional support of a local millage. Ten "vo-techs," including Mid-South, accepted the conversion challenge.

The decision could easily be described as a "leap of faith," considering the early history of the institution. In operation since 1979, the school experienced little growth or support during its first 12 years of existence. At the time of its conversion to a technical college, Mid-South served fewer than 100 students annually and offered primarily adult education classes, truck driver training, practical nursing, and data processing/clerical support courses.

Section 22 of Act 1244 allowed newly-formed technical colleges to convert to community colleges with the passage of a local millage and approval of the State Board of Higher Education. Mid-South became the only vocational technical school to take this additional step. The Board of Trustees considered conversion to a community college essential to address the weak economy, unemployment, and alarmingly low college-attendance rate in Crittenden County. The State Board of Higher Education approved the application for conversion on October 23, 1992. A steering committee proposed a county-wide levy of four mills, a recommendation ratified by the Mid-South Technical College Board of Trustees. The voters of Crit-

tenden County put their stamp of approval on the effort with overwhelming support on February 16, 1993. Later that year, the State Board of Higher Education granted the College authority to offer its first degree.

PROGRAMS OF STUDY

ASU Mid-South offers degree and certificate programs to meet student and community needs. Program courses address general education knowledge as well as behaviors needed for good citizenship and successful careers.

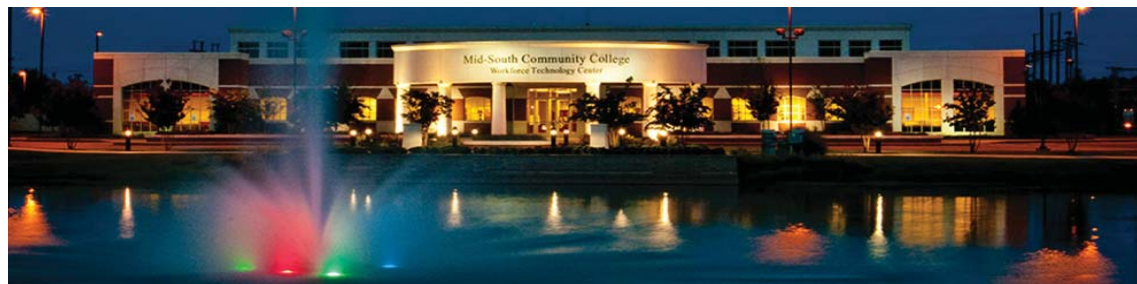
Programs offered are Aviation Technology, Business, Diesel Technology, Digital Media, Emergency Tech, General Education, Hospitality, Information Technology, Machine Technology, Mechatronics, Medical Assistant, Nursing Assistant, Process Control, Respiratory Therapy, Teaching, and Welding Technology.

ARKANSAS STATE UNIVERSITY MID-SOUTH

2000 West Broadway
West Memphis, AR 72301
(870)733-6722
www.midsouthcc.edu

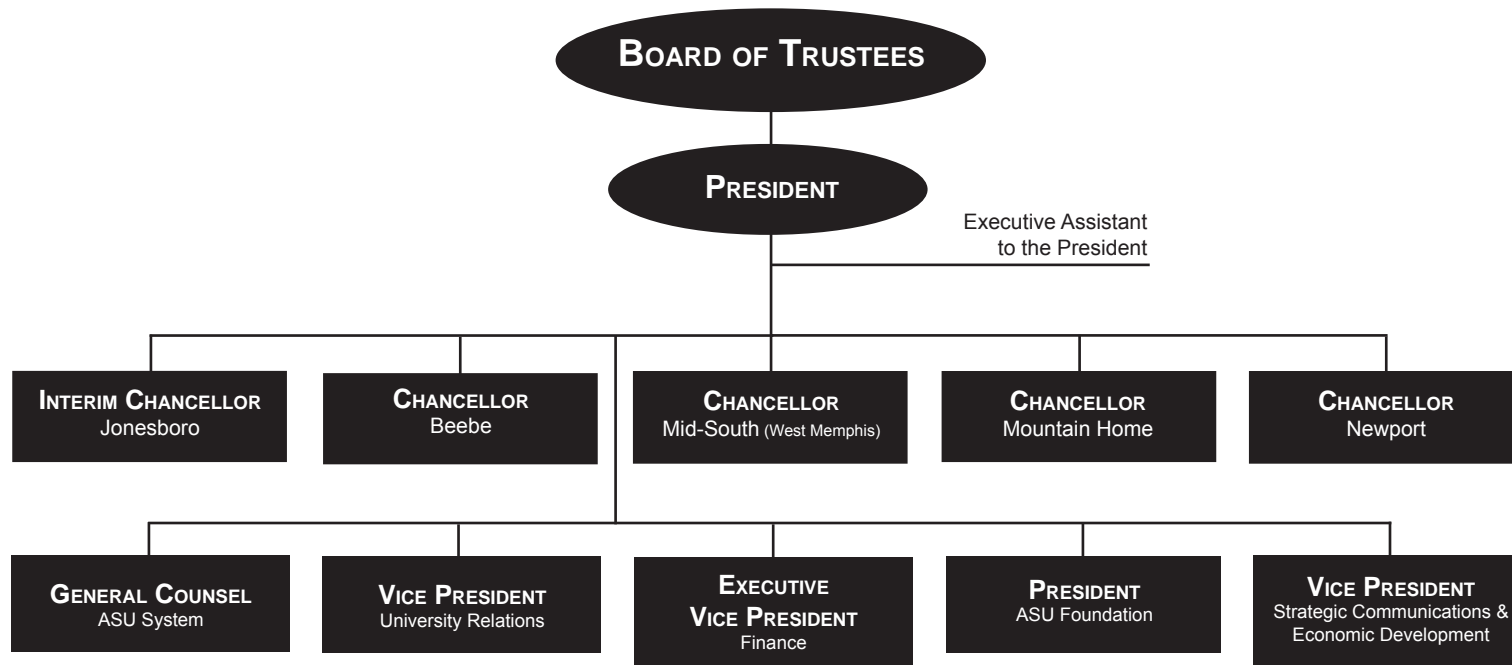
ACCREDITATION

ASU Mid-South is accredited by the Higher Learning Commission of the North Central Association of Colleges and Schools. ASU Mid-South's Nursing Assistant Program is certified by the Arkansas Department of Human Services Division of Medical Services Office of Long Term Care. The Emergency Medical Assistant Program is certified by the Arkansas Department of Health Section of Emergency Medical Services. The Pharmacy Technology program is accredited by the American Society of Health-System Pharmacists. The Respiratory Care program is accredited by the Commission on Accreditation for Respiratory Care (CoARC).



Arkansas State University System

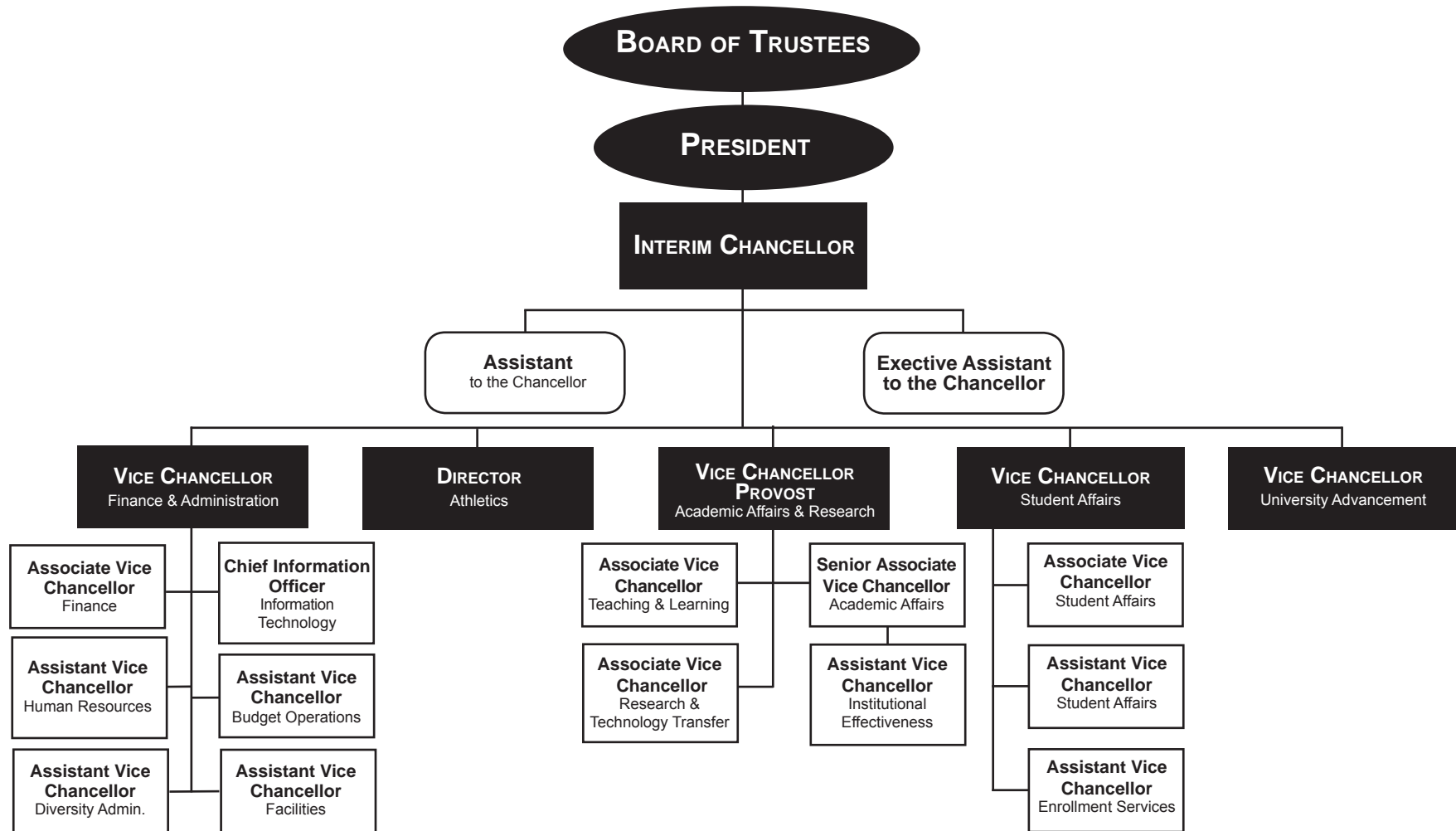
2016-2017 Organizational Structure



Arkansas State University



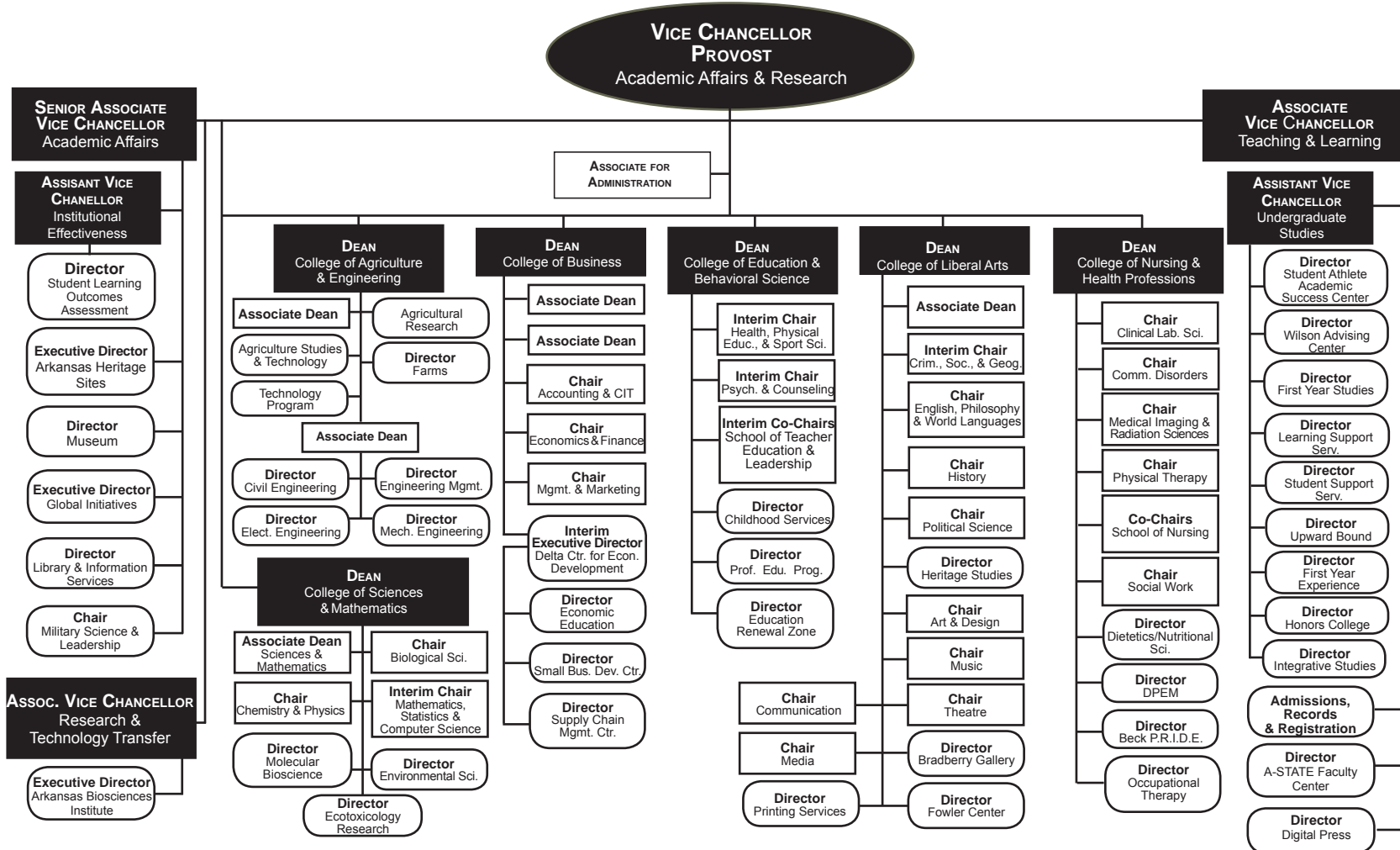
2016-2017 Organizational Structure



Data Source: Office of the Chancellor of Arkansas State University
 Information Source: The Office of Institutional Effectiveness: web address: www.AState.edu/irp; email address: asuipr@AState.edu

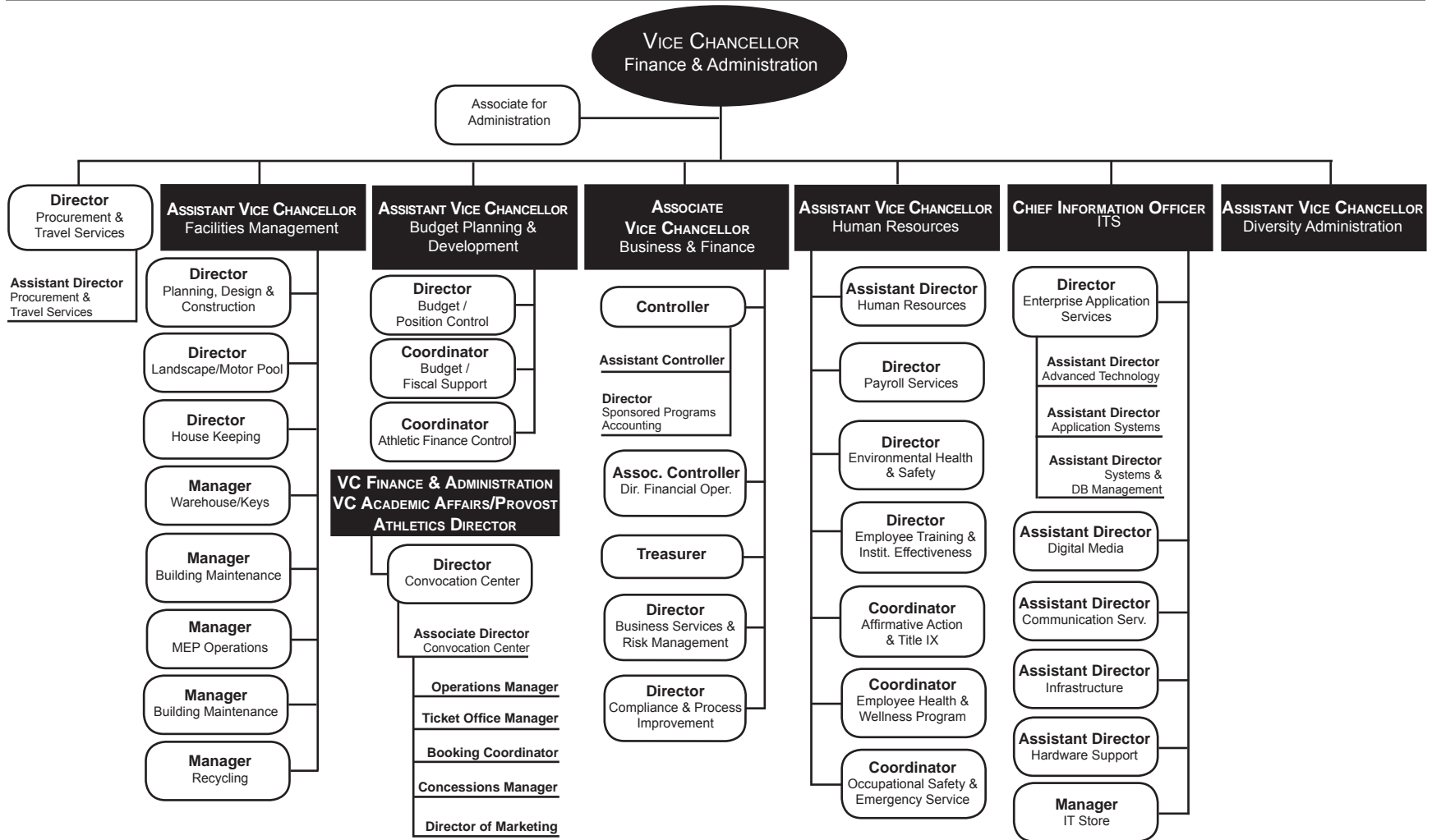
Academic Affairs & Research, A-State

2016-2017 Organizational Structure



Finance & Administration, A-State

2016-2017 Organizational Structure

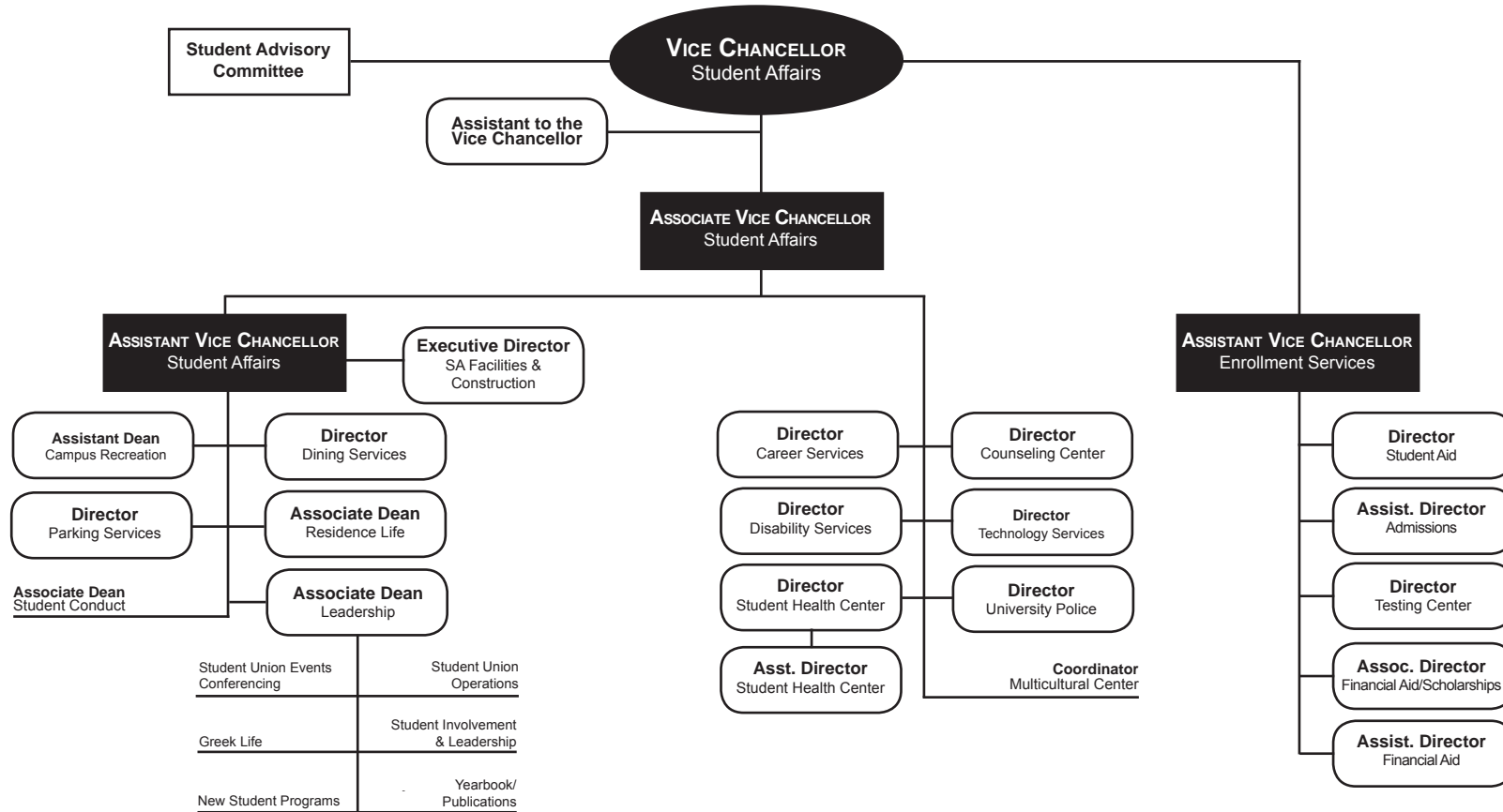


Data Source: Office of Finance & Administration, Arkansas State University
 Information Source: The Office of Institutional Effectiveness: web address: www.AState.edu/irp; email address: asuipr@AState.edu

Student Affairs, A-State



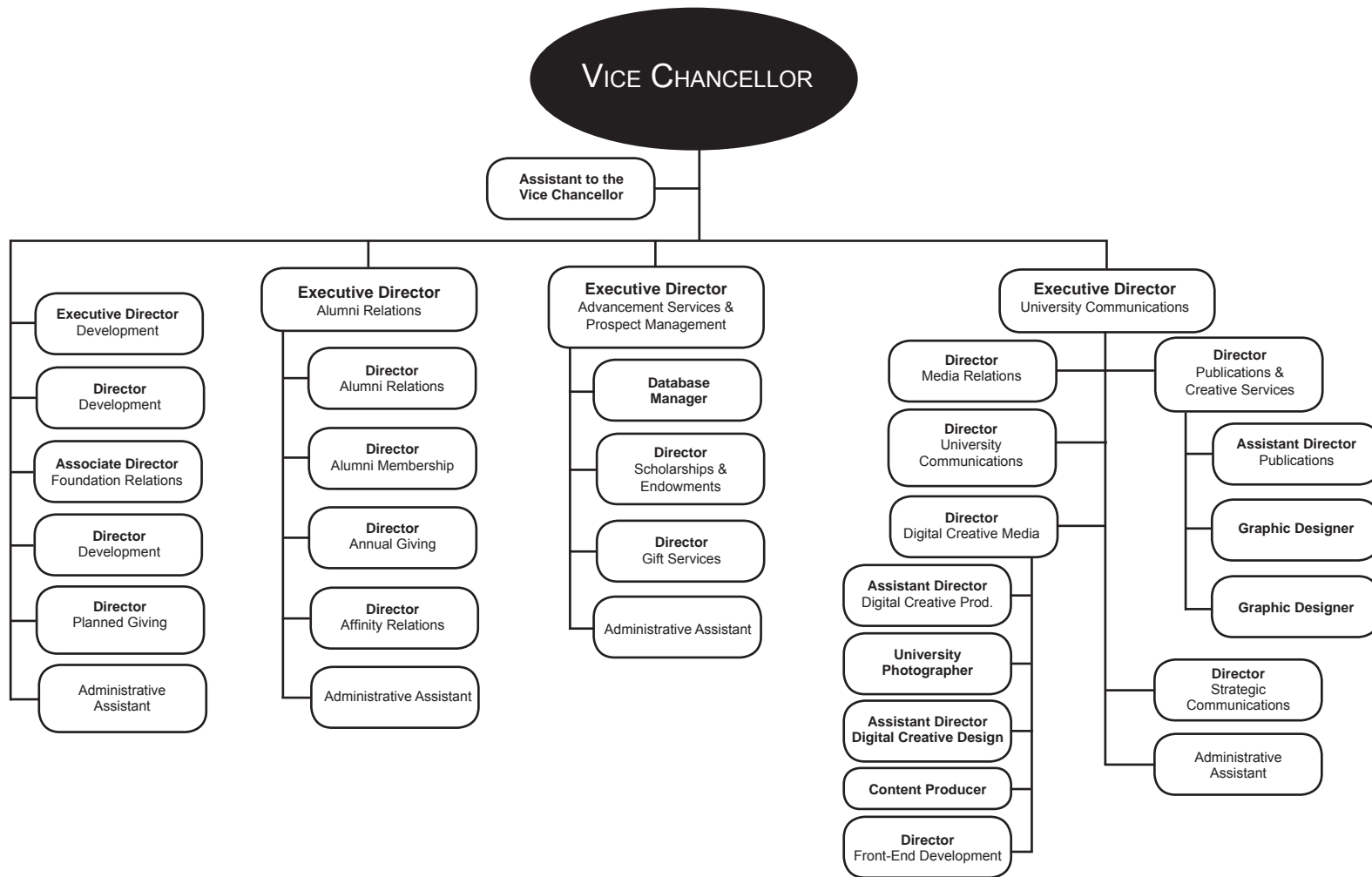
2016-2017 Organizational Structure



Data Source: Office of Student Affairs, Arkansas State University
 Information Source: The Office of Institutional Effectiveness: web address: www.AState.edu/irp; email address: asuip@AState.edu

University Advancement, A-State

2016-2017 Organizational Structure



Data Source: Office of University Advancement, Arkansas State University
 Information Source: The Office of Institutional Effectiveness: web address: www.AState.edu/irp; email address: asuipr@AState.edu

Institutional Classifications

Southern Regional Education Board (SREB) & Carnegie Foundation

SREB CLASSIFICATIONS

The SREB system for categorizing postsecondary education institutions is based upon a number of factors relevant to determining resource requirements. Differences in institutional size (*number of degrees*), role (*types of degrees*), breadth of program offerings (*number of program areas in which degrees are granted*), and comprehensiveness (*distribution of degrees across program areas*) are the factors upon which institutions are classified.

Institutions are assigned to categories for a report year using the previous academic year's data on program completions. To keep the statistical comparison groups relatively stable over time and to assure that institutions change categories only when their measures on a criterion are relatively stable, institutions change categories when they meet the criterion for another category for the third consecutive year.

♦**Four-Year 1:** Institutions awarding at least 100 doctoral degrees distributed among at least 10 CIP categories (2-digit classification) with no more than 50 percent in any one category. (*University of Arkansas-Fayetteville*)

♦**Four-Year 2:** Institutions awarding at least 30 doctoral degrees distributed among at least 5 CIP categories.

♦**Four-Year 3:** Institutions awarding at least 100 master's, education specialist, post-master's, or doctoral degrees with master's, education specialist, and post-master's degrees distributed among at least 10 CIP categories. (*Arkansas State University, Arkansas Tech University, University of Arkansas-Little Rock, and University of Central Arkansas*)

♦**Two-Year 2:** Institutions awarding associate degrees and offering college transfer courses with FTE enrollment of between 2,000 and 4,999. (*Arkansas State University-Beebe*)

♦**Two-Year 3:** Institutions awarding associate degrees and offering college transfer courses with FTE enrollment of less than 2,000. (*Arkansas State University-Mountain Home, Arkansas State University-Newport and Arkansas State University Mid-South*)

SREB FOUR-YEAR 3 PEER UNIVERSITIES

Alabama: *Alabama A&M University, Jacksonville State University, Troy University, University of South Alabama*

Arkansas: *Arkansas State University, Arkansas Technical University, University of Arkansas - Little Rock, University of Central Arkansas*

Delaware: *Delaware State University*

Florida: *Florida A&M University, University of North Florida, University of West Florida*

Georgia: *Georgia Southern University, Kennesaw State University, University of West Georgia, Valdosta State University*

Kentucky: *Eastern Kentucky University, Moorehead State University, Murray State University, Western Kentucky University*

Louisiana: *Southeastern Louisiana University, Southern University A&M at Baton Rouge, University of Louisiana at Monroe*

Maryland: *Towson University*

North Carolina: *Appalachian State University, North Carolina A&T State University, North Carolina Central University, University of North Carolina-Wilmington, Western Carolina University*

Oklahoma: *Northeastern State University, University of Central Oklahoma*

South Carolina: *College of Charleston, The Citadel, Winthrop University*

Tennessee: *Austin Peay State University, East Tennessee State University, Middle Tennessee State University, Tennessee Technological University, University of Tennessee at Chattanooga*

Texas: *Angelo State University, Lamar University, Midwestern State University, Prairie View A&M University, Sam Houston State University, Stephen F. Austin State University, Sul Ross State University, Tarleton State University, Texas A&M International University, Texas A&M University Commerce, Texas A&M University Corpus Christi, Texas A&M University Kingsville, Texas Southern University, Texas State University-San Marcos, University of Houston Clear Lake, University of Texas at Brownsville, University of Texas Pan-American, University of Texas-Tyler, University of Texas of the Permian Basin, West Texas A&M University*

Virginia: *James Madison University, Longwood University, Norfolk State University, Radford University, University of Mary Washington, Virginia State University*

West Virginia: *Marshall University*

CARNEGIE CLASSIFICATION

The Carnegie Commission developed a classification of colleges and universities to support its program of research and policy analysis. With the 2005 revision, the single classification was replaced by a set of multiple, parallel classifications. They are organized around three fundamental questions: what is taught (*Undergraduate & Graduate Instructional Programs*), who are the students (*Enrollment Profile & Undergraduate Profile*), and what is the setting (*Size & Setting*).

A-State's Classifications by Category*

Basic: (Master's L - Master's Colleges and Universities with larger programs) *Generally includes institutions that award at least 50 master's degrees and fewer than 20 doctoral degrees per year.*

Size & Setting: (M4/NR - Medium four-year) *Fall FTE enrollment of 3,000 - 9,999 degree seeking students at these bachelor's degree granting institutions. Fewer than 25% of degree-seeking undergraduates live on campus.*

Enrollment Profile: (HU - High undergraduate) *Fall enrollment data show both undergraduate and graduate/professional students, with the graduate enrollment accounting for less than 10-24% of FTE enrollment.*

Undergraduate Profile: (FT4/I - Full-time four-year, inclusive) *Fall enrollment data show at least 80% of undergraduates enrolled full-time at these bachelor's degree granting institutions. At these institutions test scores indicate that they extend educational opportunity to a wide range of students with respect to academic preparation and achievement.*

Undergraduate Instructional Program: (Prof+A&S/SGC - Professions plus arts & sciences, some graduate coexistence) *60-79% of bachelor's degree majors were in professional fields, and graduate degrees were observed in some of the fields corresponding to undergraduate majors (but less than half).*

Graduate Instructional Program: (Doc/Prof - Doctoral, professional dominant) *These institutions award doctoral degrees in a range of fields, with the plurality in the professions other than engineering (such as education, health professions, public policy, or social work).*

*NOTE: The most recent Carnegie Classifications are based on time-specific snapshots of institutional attributes and behavior based on data from 2013/2014.
Data Source: Southern Regional Education Board & The Carnegie Foundation
Information Source: The Office of Institutional Effectiveness: web address: www.AState.edu/irp; email address: asuipr@AState.edu



Academics

Undergraduate Academic Programs

Arkansas State University

Associate Degree Programs

ASSOCIATE IN APPLIED SCIENCE
Clinical Laboratory Science
Crime Scene Investigation
Disaster Preparedness & Emergency Management
Law Enforcement
Law Enforcement Administration
Occupational Therapy Assistant
Paramedic
Physical Therapist Assistant

ASSOCIATE IN APPLIED SCIENCE IN NURSING
Nursing

ASSOCIATE IN GENERAL STUDIES
General Studies

ASSOCIATE IN SCIENCE
Computer & Information Technology
General Education
Liberal Arts
Technology

ASSOCIATE OF ARTS
General Education

Bachelor's Degree Programs

BACHELOR OF APPLIED SCIENCE
Applied Science

BACHELOR OF ARTS
Art
Chemistry
Communication Studies
Computer Science

BACHELOR OF ARTS (CONT.)
Criminology
Economics
English
Environmental Studies
History
Music
Philosophy
Political Science
Sociology
Theatre
World Languages & Cultures

BACHELOR OF FINE ARTS
Art
Graphic Design

BACHELOR OF GENERAL STUDIES
General Studies

BACHELOR OF MUSIC
Music Performance

BACHELOR OF MUSIC EDUCATION
Instrumental Music Education
Vocal Music Education

BACHELOR OF SCIENCE
Accounting
Athletic Training
Biological Sciences
Biotechnology
Business Administration
Business Economics
Chemistry
Clinical Laboratory Science
Communication Disorders
Computer & Information Technology

BACHELOR OF SCIENCE (CONT.)
Computer Science
Creative Media Production
Dietetics
Disaster Preparedness & Emergency Management
Environmental Sciences
Exercise Science
Finance
Forensic Science
Global Supply Chain Management
Health Promotion
Health Studies
Interdisciplinary Studies
International Business
Management
Marketing
Mathematics
Multimedia Journalism
Physics
Psychology
Sport Management
Strategic Communications
Technology
Wildlife Ecology & Management

BACHELOR OF SCIENCE IN AGRICULTURE
Agricultural Business
Agricultural Studies
Animal Science
Plant Science

BACHELOR OF SCIENCE IN EDUCATION
Biology Education
Business Technology Education
Chemistry Education

BACHELOR OF SCIENCE IN EDUCATION (CONT.)
Elementary Education
English Education
Mathematics Education
Middle Level Education
Physical Education
Physics Education
Social Science Education
Special Education, K-12
World Languages & Cultures Education

BACHELOR OF SCIENCE IN ENGINEERING
Engineering

BACHELOR OF SCIENCE IN CIVIL ENGINEERING
Civil Engineering

BACHELOR OF SCIENCE IN ELECTRICAL ENGINEERING
Electrical Engineering

BACHELOR OF SCIENCE IN MECHANICAL ENGINEERING
Mechanical Engineering

BACHELOR OF SCIENCE IN NURSING
Nursing

BACHELOR OF SCIENCE IN RADIOLOGIC SCIENCES
Radiologic Sciences

BACHELOR OF SOCIAL WORK
Social Work

Graduate Academic Programs

Arkansas State University

Certificate Programs

GRADUATE CERTIFICATE
Addiction Studies
Aging Studies
Building Level Administration
Clinical Mental Health Counseling
Curriculum Director
Dyslexia Therapy
Gifted Talented Creative Teacher
Gifted Talented Director
Health Care Emergency Management
Health Care Management
Health Communications
Health Sciences Education
History
Nurse Educator
Play Therapy
Special Education Director
Special Education Teacher
Student Affairs

Master's Degree Programs

MASTER OF ACCOUNTANCY
Accounting

MASTER OF ARTS
Biological Sciences
Communication Studies
Criminal Justice
English
Heritage Studies
History
Political Science
Sociology

MASTER OF ARTS IN TEACHING
Teaching

MASTER OF BUSINESS ADMINISTRATION
Business Administration

MASTER OF COMMUNICATION DISORDERS
Communication Disorders

MASTER OF ENGINEERING MANAGEMENT
Engineering Management

MASTER OF MUSIC
Music Performance MASTER OF MUSIC

EDUCATION
Music Education

MASTER OF PUBLIC ADMINISTRATION
Public Administration

MASTER OF REHABILITATION COUNSELING
Rehabilitation Counseling

MASTER OF SCIENCE
Biology
Chemistry
College Student Personnel Services
Computer Science
Disaster Preparedness & Emergency Management
Early Childhood Services
Environmental Science
Exercise Science
Health Sciences
Mathematics
Media Management
Molecular Biosciences
Psychological Science
Sports Administration

MASTER OF SCIENCE IN AGRICULTURE
Agriculture

MASTER OF SCIENCE IN EDUCATION
Biology Education
Chemistry Education
Curriculum & Instruction
Early Childhood Education
Educational Leadership
Educational Theory & Practice
English Education
Mathematics Education
Middle Level Education
Physical Education
Reading Education
School Counseling
Social Science Education
Special Education;
Gifted, Talented & Creative
Special Education;
Instructional Specialist, P-4
Special Education;
Instructional Specialist, 4-12
Special Education, K-12

MASTER OF SCIENCE IN ENGINEERING
Engineering

MASTER OF SCIENCE IN MASS COMMUNICATIONS
Mass Communications

MASTER OF SCIENCE IN NURSING
Nurse Anesthesia
Nursing

MASTER OF SOCIAL WORK
Social Work

PROFESSIONAL SCIENCE MASTERS
Biotechnology

Specialist Degree Programs

SPECIALIST IN COMMUNITY COLLEGE TEACHING

EDUCATION SPECIALIST
Educational Leadership
Psychology & Counseling
Reading

Doctoral Degree Programs

DOCTOR OF EDUCATION
Educational Leadership

DOCTOR OF NURSING PRACTICE
Nursing Practice

DOCTOR OF OCCUPATIONAL THERAPY
Occupational Therapy

DOCTOR OF PHILOSOPHY
Environmental Science
Heritage Studies
Molecular Biosciences

DOCTOR OF PHYSICAL THERAPY
Physical Therapy

Arkansas State University offers 47 degrees, advanced certificates and graduate certificates in 177 fields of study. In addition, A-State offers online degrees in undergraduate and graduate studies.

Available at A-State are five associate degrees in fifteen fields, sixteen bachelor's degrees in seventy-eight fields, a graduate certificate in eighteen fields, eighteen master's degrees in fifty-five fields, two specialist degrees in four fields and five doctoral degrees in seven fields.

Associate Degree Programs - Other ASU Campuses

Beebe, Mountain Home, Newport & Mid-South

ASU-Beebe

ASSOCIATE OF APPLIED SCIENCE
Agriculture Equipment Technology
Business Technology
Computer-Aided Drafting & Design
Computer Coding
Computer Systems & Networking Tech.
Crime Scene Investigation
Criminal Justice
Early Childhood Education
Emergency Medical Service
General Technology
Hospitality Administration
Law Enforcement Administration
Medical Laboratory Technology
Pharmacy Technician
Veterinary Technology
Welding Technology

ASSOCIATE OF ARTS
Liberal Arts

ASSOCIATE OF ARTS IN TEACHING
Teaching

ASSOCIATE OF FINE ARTS
Fine Arts

ASSOCIATE OF GENERAL EDUCATION
General Studies

ASSOCIATE OF SCIENCE
Agriculture
Business
Computer Information Systems
Criminal Justice
Education
Environmental Science
Health Sciences
Liberal Arts & Sciences

ASU-Mountain Home

ASSOCIATE OF APPLIED SCIENCE
Crime Scene Investigation
Criminal Justice
Funeral Science
Information Systems Technology
Law Enforcement Administration
Management
Nursing
Paramedic Technology
Respiratory Care
Welding Technology
Workforce Technology

ASSOCIATE OF ARTS
General Education

ASSOCIATE OF ARTS IN TEACHING
Teaching

ASSOCIATE OF GENERAL STUDIES
General Studies

ASSOCIATE OF SCIENCE
Agriculture & Natural Resources
Business
Criminal Justice
Early Childhood Education
Education

ASU-Newport

ASSOCIATE OF APPLIED SCIENCE
Automotive Service Technology
Business Technology
Collision Repair Technology
Computer Networking Technology
Crime Scene Investigation
Energy Control Technology
General Technology
Law Enforcement Administration
Nursing

ASSOCIATE OF ARTS
Liberal Arts

ASSOCIATE OF ARTS IN TEACHING
Teaching

ASSOCIATE OF GENERAL STUDIES
General Studies

ASSOCIATE OF SCIENCE
Business
Criminal Justice
Education
Natural Sciences

ASU Mid-South

ASSOCIATE OF APPLIED SCIENCE
Aviation Maintenance Technology
Business Technologies
Digital Media
General Technology
Hospitality Management
Information Systems Technology
Medical Assistant
Respiratory Care

ASSOCIATE OF ARTS
General Education

ASSOCIATE OF SCIENCE
Business
Education
Hospitality Management

Degrees & Certificates Awarded Summary

By Fiscal Year

Degrees & Certificates Awarded - Jonesboro Campus										
	Fiscal Years					Percentage of Total by Attribute				
	2012	2013	2014	2015	2016	2012	2013	2014	2015	2016
Total Degrees/Certificates Awarded	3,997	3,992	3,780	3,778	3,987					
Associate	456	521	392	382	512	11.4%	13.1%	10.4%	10.1%	12.8%
Bachelor's	1,641	1,721	1,824	1,766	1,713	41.1%	43.1%	48.3%	46.7%	43.0%
Graduate Certificate	8	11	12	15	23	0.2%	0.3%	0.3%	0.4%	0.6%
Master's	1,800	1,600	1,316	1,251	1,358	45.0%	40.1%	34.8%	33.1%	34.1%
Specialist	52	89	191	321	330	1.3%	2.2%	5.1%	8.5%	8.3%
Doctoral	40	50	45	43	51	1.0%	1.3%	1.2%	1.1%	1.3%

HISTORICAL DEGREES & CERTIFICATES AWARDED

Campuses	Fiscal Years				
	2012	2013	2014	2015	2016
Certificates Awarded by Campus					
Jonesboro (Graduate Certificate)	8	11	12	15	23
Beebe	529	830	945	1,015	1,021
Mtn. Home	303	303	334	324	330
Newport	538	541	359	432	569
Mid-South	--	--	--	151	436
Total Certificates	1,378	1,685	1,650	1,937	2,379
Degrees Awarded by Campus					
Jonesboro	3,989	3,981	3,768	3,763	3,964
Beebe	706	625	659	672	767
Mtn. Home	268	268	249	272	241
Newport	189	189	178	199	238
Mid-South	--	--	--	130	127
Total Degrees	5,152	5,063	4,854	5,036	5,337
Total Awards	6,530	6,748	6,504	6,973	7,716

DEGREES AWARDED BY ETHNICITY

Jonesboro Campus - Fiscal Year 2016

Ethnicity	Degrees					Total Degrees
	Associate	Bachelor's	Master's	Specialist	Doctoral	
African American	93	203	150	61	4	511
American Indian	3	8	10	3	0	24
Asian American	3	10	7	0	0	20
Hispanic American	15	43	23	4	1	86
Hawaiian/Pacific Islander	0	2	1	1	0	4
Two or More Races	7	19	21	5	1	53
White American	370	1,302	1,030	251	39	2,992
Ethnicity Unknown	8	17	23	5	0	53
International	13	109	93	0	6	221

Data Sources: ADHE Degrees and Certificates Awarded by Arkansas Higher Education Institutions
 Information Source: The Office of Institutional Effectiveness: web address: www.AState.edu/irp; email address: asuip@AState.edu

Degrees Awarded by College & Department

Jonesboro Campus - Fiscal Year 2016

College/Department/Program	Degrees/Certificates		
	Undergraduate	Graduate	Total
COLLEGE OF AGRICULTURE & TECHNOLOGY			
Agriculture	91	20	111
Technology	23	0	23
Total Agriculture & Technology Degrees	114	20	134
COLLEGE OF BUSINESS			
Accounting	59	6	65
Computer & Information Technology	19	0	19
Economics & Finance	108	50	158
Management & Marketing	109	0	109
Total Business Degrees	295	56	351
COLLEGE OF EDUCATION & BEHAVIORAL SCIENCE			
Health, Physical Education & Sport Sciences	119	31	150
Psychology & Counseling	73	46	119
School of Teacher Education & Leadership	180	1,184	1,364
Total Education & Behavioral Science Degrees	372	1,261	1,633
COLLEGE OF ENGINEERING			
	36	23	59
COLLEGE OF FINE ARTS			
Art	24	0	24
Music	21	5	26
Theatre	10	0	10
Total Fine Arts Degrees	55	5	60
COLLEGE OF HUMANITIES & SOCIAL SCIENCES			
Criminology, Sociology & Geography	75	5	80
English & Philosophy	39	7	46
History	24	7	31
Political Science	11	89	100
World Languages & Cultures	13	0	13
Heritage Studies Program	0	4	4
Total Humanities & Social Sciences Degrees	162	112	274

College/Department/Program	Degrees/Certificates		
	Undergraduate	Graduate	Total
COLLEGE OF MEDIA & COMMUNICATION			
Communication	32	8	40
Media	46	12	58
Total Media & Communication Degrees	78	20	98
COLLEGE OF NURSING & HEALTH PROFESSIONS			
Clinical Laboratory Sciences	19	0	19
Communication Disorders	30	26	56
Medical Imaging & Radiation Sciences	79	0	79
Physical Therapy	27	31	58
School of Nursing	214	103	317
Social Work	31	41	72
Coordinated Program in Dietetics	10	0	10
Disaster Preparedness Program	12	12	24
Total Nursing & Health Professions Degrees	422	213	635
COLLEGE OF SCIENCES & MATHEMATICS			
Biological Sciences	73	5	78
Chemistry & Physics	17	1	18
Computer Science	19	31	50
Mathematics & Statistics	22	3	25
Environmental Sciences Program	0	11	11
Molecular Biosciences Program	0	1	1
Total Sciences & Mathematics Degrees	131	52	183
UNIVERSITY COLLEGE			
	560	0	560
TOTAL DEGREES/CERTIFICATES AWARDED			
	2,225	1,762	3,987

Data Source: ADHE Degrees Conferred
 Information Source: The Office of Institutional Effectiveness: web address: www.AState.edu/irp; email address: asuirp@AState.edu

Degrees Awarded by Undergraduate Program

Jonesboro Campus - Fiscal Year 2016

Associate Degree Programs

COLLEGE OF AGRICULTURE & TECHNOLOGY	
AS Technology.....	5
COLLEGE OF BUSINESS	
AS Computer & Information Technology.....	2
COLLEGE OF NURSING & HEALTH PROFESSIONS	
AASN Nursing	83
AAS Radiologic Technology.....	30
AAS Physical Therapist Assistant.....	27
AAS Clinical Laboratory Science.....	4
AAS Disaster Preparedness & Emergency Management.....	4
UNIVERSITY COLLEGE	
AS General Education.....	291
AA General Education.....	45
AGS General Studies.....	21

Top Five Bachelor's Degree Programs by Number of Degrees Awarded

BS Interdisciplinary Studies.....	188
BSN Nursing	123
BSE Early Childhood Education	119
BS Psychology	73
BS Biological Sciences.....	64

Bachelor's Degree Programs

COLLEGE OF AGRICULTURE & TECHNOLOGY	
BSA Agricultural Business	44
BSA Plant Science.....	26
BSA Animal Science	19
BS Technology.....	18
BAS Applied Science	1
BSA Agricultural Studies.....	1
COLLEGE OF BUSINESS	
BS Accounting	59
BS Business Administration.....	51
BS Management.....	50
BS Finance.....	46
BS Marketing.....	35
BS International Business	19
BS Computer & Information Tech. ...	15
BA Economics	7
BS Global Supply Chain Mgmt.	5
BS Business Economics.....	4
BSE Business Technology Education ..	2
COLLEGE OF EDUCATION & BEHAVIORAL SCIENCE	
BSE Early Childhood Education	119
BS Psychology	73
BSE Middle Level Education.....	61
BS Exercise Science	49
BSE Physical Education	24
BS Sport Management	20
BS Health Promotion	20
BS Athletic Training	6

COLLEGE OF ENGINEERING

BSME Mechanical Engineering	16
BSCE Civil Engineering.....	14
BSEE Electrical Engineering	6

COLLEGE OF FINE ARTS

BME Instrumental Music Education....	17
BFA Art	12
BFA Graphic Design	12
BA Theatre	7
BFA Theatre Arts	3
BM Music Performance.....	2
BA Music	1
BME Vocal Music Education.....	1

COLLEGE OF HUMANITIES & SOCIAL SCIENCES

BA Criminology	54
BA English	25
BA Sociology	21
BA World Languages & Cultures	13
BA History.....	12
BSE Social Science Education	12
BA Political Science.....	11
BSE English Education	11
BA Philosophy	3

COLLEGE OF MEDIA & COMMUNICATION

BA Communication Studies.....	20
BS Journalism	16
BS Creative Media Production	12
BS Strategic Communications.....	12
BS Radio-Television	10
BS Multimedia Journalism	8

COLLEGE OF NURSING & HEALTH PROFESSIONS

BSN Nursing.....	123
BSRS Radiologic Sciences.....	49
BSW Social Work.....	31
BS Communication Disorders.....	30
BS Clinical Laboratory Science.....	15
BS Dietetics	10
BS Disaster Preparedness & Emergency Management.....	8
BS Health Studies.....	8

COLLEGE OF SCIENCES & MATHEMATICS

BS Biological Sciences.....	64
BS Computer Science	19
BA Chemistry.....	13
BS Mathematics	13
BSE Mathematics Education	9
BSE Biology Education	5
BS Wildlife Ecology & Management	4
BS Chemistry.....	3
BS Physics	1

UNIVERSITY COLLEGE

BS Interdisciplinary Studies	188
BGS General Studies	15

TOTAL UNDERGRADUATE DEGREES AWARDED	2,225
--	--------------

Degrees Awarded by Graduate Program

Jonesboro Campus - Fiscal Year 2016

Graduate Certificates

COLLEGE OF EDUCATION & BEHAVIORAL SCIENCE	
GCert Clinical Mental Health Counseling.....	2

COLLEGE OF NURSING & HEALTH PROFESSIONS	
GCert Addiction Studies.....	19
GCert Health Care Management.....	2

Master's Degree Programs

COLLEGE OF AGRICULTURE & TECHNOLOGY	
MSA Agriculture.....	20

COLLEGE OF BUSINESS	
MBA Business Administration.....	50
MACC Accounting.....	6

COLLEGE OF EDUCATION & BEHAVIORAL SCIENCE	
MSE Educational Leadership.....	331
MSE Educational Theory & Practice.....	234
MSE Special Ed., Gifted, Talented & Creative....	76
MSE Special Ed., Instructional Specialist, 4-12..	75
MSE Curriculum & Instruction.....	68
MSE Special Ed., Instructional Specialist, P-4....	51
MS Sports Administration.....	17
MS College Student Personnel Services.....	16
MS Exercise Science.....	14
MS Early Childhood Services.....	11
MSE School Counseling.....	10
MAT Teaching.....	7
MRC Rehabilitation Counseling.....	4
MSE Reading Education.....	4
MSE Middle Level Education.....	3

COLLEGE OF ENGINEERING	
MEM Engineering Management.....	20
MSEN Engineering.....	3

COLLEGE OF FINE ARTS	
MM Music Performance.....	5

COLLEGE OF HUMANITIES & SOCIAL SCIENCES	
MPA Public Administration.....	86
MA English.....	7
MA History.....	7
MA Criminal Justice.....	4
MA Political Science.....	3
MA Heritage Studies.....	1
MA Sociology.....	1

COLLEGE OF MEDIA & COMMUNICATION	
MA Communication Studies.....	8
MSMC Journalism.....	8
MSMC Radio-Television.....	4

COLLEGE OF NURSING & HEALTH PROFESSIONS	
MSN Nurse Anesthesia.....	42
MSW Social Work.....	41
MSN Nursing.....	34
MCD Communication Disorders.....	26
MS Disaster Preparedness.....	12
MS Health Sciences.....	2

COLLEGE OF SCIENCES & MATHEMATICS	
MS Computer Science.....	31
MS Environmental Science.....	7
MS Biology.....	3
MS Mathematics.....	3
MA Biological Sciences.....	1
MS Chemistry.....	1
MSE Biology Education.....	1

Specialist Degree Programs

COLLEGE OF EDUCATION & BEHAVIORAL SCIENCE	
EDS Educational Leadership.....	310
EDS Psychology & Counseling.....	14
SCCT Community College Admin. Edu.....	6

Doctoral Degree Programs

COLLEGE OF EDUCATION & BEHAVIORAL SCIENCE	
EDD Educational Leadership.....	8

COLLEGE OF HUMANITIES & SOCIAL SCIENCES	
PHD Heritage Studies.....	3

COLLEGE OF NURSING & HEALTH PROFESSIONS	
DPT Physical Therapy.....	31
DNP Nursing Practice.....	4

COLLEGE OF SCIENCES & MATHEMATICS	
PHD Environmental Science.....	4
PHD Molecular Biosciences.....	1

TOTAL GRADUATE DEGREES AWARDED 1,762

Top Five Graduate Degree Programs by Number of Degrees Awarded

MSE Educational Leadership.....	331
EDS Educational Leadership.....	310
MSE Educational Theory & Practice.....	234
MPA Public Administration.....	86
MSE Special Ed., Gifted, Talented & Creative.....	76



Students

System Enrollment Summary

Jonesboro, Beebe*, Mtn. Home, Newport* & Mid-South - Fall 2016

Campus Student Enrollment											
	Campuses						Percentage of Total by Attribute				
	A-State	ASUB	ASUMH	ASUN	ASUMS	Total	A-State	ASUB	ASUMH	ASUN	ASUMS
Total Headcount	14,085	3,989	1,367	2,718	1,836	23,995	58.7%	16.6%	5.7%	11.3%	7.7%
Full-Time**	8,061	2,082	714	1,057	530	12,444	64.8%	16.7%	5.7%	8.5%	4.3%
Part-Time	6,024	1,907	653	1,661	1,306	11,551	52.2%	16.5%	5.7%	14.4%	11.3%
Full-Time Equivalent (FTE)	10,107	2,678	953	1,568	993	16,299	62.0%	16.4%	5.8%	9.6%	6.1%
Semester Credit Hours	146,065	40,166	14,290	23,514	14,891	238,926	61.1%	16.8%	6.0%	9.8%	6.2%
Degrees/Certificates Awarded***	3,987	1,788	571	807	563	7,716	51.7%	23.2%	7.4%	10.5%	7.3%

Campus Student Demographics											
	Campuses						Percentage of Total by Attribute				
	A-State	ASUB	ASUMH	ASUN	ASUMS	Total	A-State	ASUB	ASUMH	ASUN	ASUMS
Headcount by Age											
Under 25	8,627	3,042	780	2,240	1,380	16,069	53.7%	18.9%	4.9%	13.9%	8.6%
25 & Older	5,458	947	587	478	456	7,926	68.9%	11.9%	7.4%	6.0%	5.8%
Headcount by Gender											
Male	5,625	1,721	577	1,081	763	9,767	57.6%	17.6%	5.9%	11.1%	7.8%
Female	8,460	2,268	790	1,637	1,073	14,228	59.5%	15.9%	5.6%	11.5%	7.5%
Headcount by Ethnicity+											
African American	1,836	243	10	417	1,040	3,546	51.8%	6.9%	0.3%	11.8%	29.3%
White American	10,448	3,280	1,245	1,964	623	17,560	59.5%	18.7%	7.1%	11.2%	3.5%
Other Ethnicity	1,801	466	112	337	173	2,889	62.3%	16.1%	3.9%	11.7%	6.0%

*NOTE: Beebe's enrollment includes Heber Springs and Searcy. Newport's enrollment includes the Commercial Driving Technical Certificate Program, the ASU Technical Center at Marked Tree and the Jonesboro Technical Center.

**NOTE: A "full-time" undergraduate student load is 12 or more semester credits, and a "full-time" graduate student load is 9 or more semester credits.

***NOTE: Degrees/Certificates Awarded represents degrees conferred during fiscal year 2015-2016.

**NOTE: "Other" includes students reported as American Indian/Alaskan Native, Asian American, Hispanic American, Native Hawaiian/Pacific Islander, those reporting two or more races, International and those whose ethnicity is unknown.

Data Sources: Institutional Research Office, Arkansas State University-Beebe; Registrar's Office, Arkansas State University-Mountain Home; Arkansas State University-Newport and Arkansas State University Mid-South.

Information Source: The Office of Institutional Effectiveness; web address: www.AState.edu/irp; email address: asuipr@AState.edu

Total Enrollment

Jonesboro Campus - Fall 2012 to Fall 2016

Total Enrollment										
	Fall Semesters					Percentage of Total Enrollment				
	2012	2013	2014	2015	2016	2012	2013	2014	2015	2016
Total Headcount	13,877	13,552	13,144	13,410	14,085					
Undergraduate	10,168	10,098	9,857	9,592	9,839	73.3%	74.5%	75.0%	71.5%	69.9%
Graduate	3,709	3,454	3,287	3,818	4,246	26.7%	25.5%	25.0%	28.5%	30.1%
Headcount by Load										
Full-Time*	8,601	8,384	8,126	8,031	8,061	62.0%	61.9%	61.8%	59.9%	57.2%
Part-Time	5,276	5,168	5,018	5,379	6,024	38.0%	38.1%	38.2%	40.1%	42.8%
Full-Time Equivalent (FTE)	10,095	10,017	9,822	9,857	10,107					
Student Demographics										
	Fall Semesters					Percentage of Total Enrollment				
	2012	2013	2014	2015	2016	2012	2013	2014	2015	2016
Headcount by Age										
Under 25	8,270	8,351	8,315	8,376	8,627	59.6%	61.6%	63.3%	62.5%	61.2%
25 & Older	5,607	5,201	4,829	5,034	5,458	40.4%	38.4%	36.7%	37.5%	38.8%
Headcount by Gender										
Male	5,465	5,386	5,347	5,446	5,625	39.4%	39.7%	40.7%	40.6%	39.9%
Female	8,412	8,166	7,797	7,964	8,460	60.6%	60.3%	59.3%	59.4%	60.1%
Headcount by Ethnicity										
African American	2,108	1,923	1,834	1,788	1,836	15.2%	14.2%	14.0%	13.3%	13.0%
American Indian/Alaskan Native	66	57	71	54	59	0.5%	0.4%	0.5%	0.4%	0.4%
Asian American	89	97	102	111	116	0.6%	0.7%	0.8%	0.8%	0.8%
Hispanic American	266	267	293	324	350	1.9%	2.0%	2.2%	2.4%	2.5%
Native Hawaiian/Pacific Islander	7	10	16	12	10	<0.1%	0.1%	0.1%	0.1%	0.1%
Two or More Races	178	211	209	242	249	1.3%	1.6%	1.6%	1.8%	1.8%
White American	10,072	9,995	9,744	9,996	10,448	72.6%	73.8%	74.1%	74.5%	74.2%
Ethnicity Unknown	233	185	129	123	166	1.7%	1.4%	1.0%	0.9%	1.2%
International	858	807	746	760	851	6.2%	6.0%	5.7%	5.7%	6.0%

*NOTE: A "full-time" undergraduate student load is 12 or more semester credits, and a "full-time" graduate student load is 9 or more semester credits.
Data Source: Student Enrollment Information
Information Source: The Office of Institutional Effectiveness web address: www.AState.edu/irp; email address: asuipr@AState.edu

Total Enrollment

Beebe Campus - Fall 2012 to Fall 2016

Total Enrollment										
	Fall Semesters					Percentage of Total Enrollment				
	2012	2013	2014	2015	2016	2012	2013	2014	2015	2016
Total Headcount	4,643	4,380	4,140	3,935	3,989					
Full-Time*	2,385	2,220	2,131	2,071	2,082	51.4%	50.7%	51.5%	52.6%	52.2%
Part-Time	2,258	2,160	2,009	1,864	1,907	48.6%	49.3%	48.5%	47.4%	47.8%
Full-Time Equivalent (FTE)	3,085	2,886	2,770	2,680	2,678					
Student Demographics										
	Fall Semesters					Percentage of Total Enrollment				
	2012	2013	2014	2015	2016	2012	2013	2014	2015	2016
Headcount by Age Categories										
Under 18	894	956	925	861	937	19.3%	21.8%	22.3%	21.9%	23.5%
18 to 19	1,238	1,256	1,289	1,264	1,210	26.7%	28.7%	31.1%	32.1%	30.3%
20 to 21	685	612	558	526	533	14.8%	14.0%	13.5%	13.4%	13.4%
22 to 24	497	411	414	365	362	10.7%	9.4%	10.0%	9.3%	9.1%
25 to 29	441	396	314	336	352	9.5%	9.0%	7.6%	8.5%	8.8%
30 to 44	627	552	467	397	413	13.5%	12.6%	11.3%	10.1%	10.4%
45 to 64	222	169	150	161	152	4.8%	3.9%	3.6%	4.1%	3.8%
65 & Over	39	28	23	25	30	0.8%	0.6%	0.6%	0.6%	0.8%
Age Unknown	0	0	0	0	0	0.0%	0.0%	0.0%	0.0%	0.0%
Headcount by Gender										
Male	1,920	1,874	1,802	1,771	1,721	41.4%	42.8%	43.5%	45.0%	43.1%
Female	2,723	2,506	2,338	2,164	2,268	58.6%	57.2%	56.5%	55.0%	56.9%
Headcount by Ethnicity**										
African American	218	198	201	242	243	4.7%	4.5%	4.9%	6.1%	6.1%
White American	3,964	3,713	3,470	3,260	3,280	85.4%	84.8%	83.8%	82.8%	82.2%
Other Ethnicity	461	469	469	433	466	9.9%	10.7%	11.3%	11.0%	11.7%

*NOTE: A "full-time" undergraduate student load is 12 or more semester credits.

**NOTE: "Other" includes students reported as American Indian/Alaskan Native, Asian American, Hispanic American, Hawaiian Native/Pacific Islander, those reporting two or more races, International and those whose ethnicity is unknown.

Data Sources: Beebe Student Enrollment; Institutional Research Office, Arkansas State University-Beebe

Information Source: The Office of Institutional Effectiveness; web address: www.AState.edu/irp; email address: asuip@AState.edu

Total Enrollment

Mountain Home Campus - Fall 2012 to Fall 2016

Total Enrollment										
	Fall Semesters					Percentage of Total Enrollment				
	2012	2013	2014	2015	2016	2012	2013	2014	2015	2016
Total Headcount	1,413	1,446	1,393	1,384	1,367					
Full-Time*	922	911	817	740	714	65.3%	63.0%	58.7%	53.5%	52.2%
Part-Time	491	535	576	644	653	34.7%	37.0%	41.3%	46.5%	47.8%
Full-Time Equivalent (FTE)	1,047	1,104	985	960	953					
Student Demographics										
	Fall Semesters					Percentage of Total Enrollment				
	2012	2013	2014	2015	2016	2012	2013	2014	2015	2016
Headcount by Age Categories										
Under 18	83	186	122	199	174	5.9%	12.9%	8.8%	14.4%	12.7%
18 to 19	342	156	346	330	342	24.2%	10.8%	24.8%	23.8%	25.0%
20 to 21	177	191	141	138	131	12.5%	13.2%	10.1%	10.0%	9.6%
22 to 24	172	188	145	115	133	12.2%	13.0%	10.4%	8.3%	9.7%
25 to 29	208	211	191	174	175	14.7%	14.6%	13.7%	12.6%	12.8%
30 to 44	292	361	295	280	263	20.7%	25.0%	21.2%	20.2%	19.2%
45 to 64	134	137	141	136	138	9.5%	9.5%	10.1%	9.8%	10.1%
65 & Over	5	16	12	12	11	0.4%	1.1%	0.9%	0.9%	0.8%
Age Unknown	0	0	0	0	0	0.0%	0.0%	0.0%	0.0%	0.0%
Headcount by Gender										
Male	521	549	529	517	577	36.9%	38.0%	38.0%	37.4%	42.2%
Female	892	897	864	867	790	63.1%	62.0%	62.0%	62.6%	57.8%
Headcount by Ethnicity**										
African American	3	11	9	8	10	0.2%	0.8%	0.6%	0.6%	0.7%
White American	1,272	1,357	1,248	1,239	1,245	90.0%	93.8%	89.6%	89.5%	91.1%
Other Ethnicity	138	78	136	137	112	9.8%	5.4%	9.8%	9.9%	8.2%

*NOTE: A "full-time" undergraduate student load is 12 or more semester credits.

**NOTE: "Other" includes students reported as American Indian/Alaskan Native, Asian American, Hispanic American, Hawaiian Native/Pacific Islander, those reporting two or more races, International and those whose ethnicity is unknown.

Data Sources: Mountain Home Student Enrollment; Registrar's Office, Arkansas State University-Mountain Home

Information Source: The Office of Institutional Effectiveness: web address: www.AState.edu/irp; email address: asuirp@AState.edu

Total Enrollment

Newport Campus - Fall 2012 to Fall 2016

Total Enrollment										
	Fall Semesters					Percentage of Total Enrollment				
	2012	2013	2014	2015	2016	2012	2013	2014	2015	2016
Total Headcount	2,043	2,039	2,481	2,652	2,718					
Full-Time*	839	955	1,000	1,032	1,057	41.1%	46.8%	40.3%	38.9%	38.9%
Part-Time	1,204	1,084	1,481	1,620	1,661	58.9%	53.2%	59.7%	61.1%	61.1%
Full-Time Equivalent (FTE)	1,226	1,265	1,376	1,482	1,568					

Student Demographics										
	Fall Semesters					Percentage of Total Enrollment				
	2012	2013	2014	2015	2016	2012	2013	2014	2015	2016
Headcount by Age Categories										
Under 18	571	463	761	828	831	27.9%	22.7%	30.7%	31.2%	30.6%
18 to 19	388	451	565	588	769	19.0%	22.1%	22.8%	22.2%	28.3%
20 to 21	229	269	267	305	376	11.2%	13.2%	10.8%	11.5%	13.8%
22 to 24	221	209	246	259	264	10.8%	10.3%	9.9%	9.8%	9.7%
25 to 29	210	204	215	226	250	10.3%	10.0%	8.7%	8.5%	9.2%
30 to 44	302	328	320	353	148	14.8%	16.1%	12.9%	13.3%	5.4%
45 to 64	103	110	97	86	76	5.0%	5.4%	3.9%	3.2%	2.8%
65 & Over	15	5	10	7	4	0.7%	0.2%	0.4%	0.3%	0.1%
Age Unknown	4	0	0	0	0	0.2%	0.0%	0.0%	0.0%	0.0%
Headcount by Gender										
Male	924	838	1,010	1,098	1,081	45.2%	41.1%	40.7%	41.4%	39.8%
Female	1,119	1,201	1,471	1,554	1,637	54.8%	58.9%	59.3%	58.6%	60.2%
Headcount by Ethnicity**										
African American	262	259	386	451	417	12.8%	12.7%	15.6%	17.0%	15.3%
White American	1,544	1,523	1,812	1,873	1,964	75.6%	74.7%	73.0%	70.6%	72.3%
Other Ethnicity	237	257	283	328	337	11.6%	12.6%	11.4%	12.4%	12.4%

*NOTE: A "full-time" undergraduate student load is 12 or more semester credits.

**NOTE: "Other" includes students reported as American Indian/Alaskan Native, Asian American, Hispanic American, Hawaiian Native/Pacific Islander, those reporting two or more races, International and those whose ethnicity is unknown.

Data Sources: Newport Student Enrollment; Arkansas State University-Newport

Information Source: The Office of Institutional Effectiveness: web address: www.AState.edu/irp; email address: asuip@AState.edu

Total Enrollment

Mid-South Campus - Fall 2015 to Fall 2016

Total Enrollment				
	Fall Semester		Percentage	
	2015	2016	2015	2016
Total Headcount	1,896	1,836		
Full-Time*	570	530	30.1%	28.9%
Part-Time	1,326	1,306	69.9%	71.1%
Full-Time Equivalent (FTE)	1,033	993		

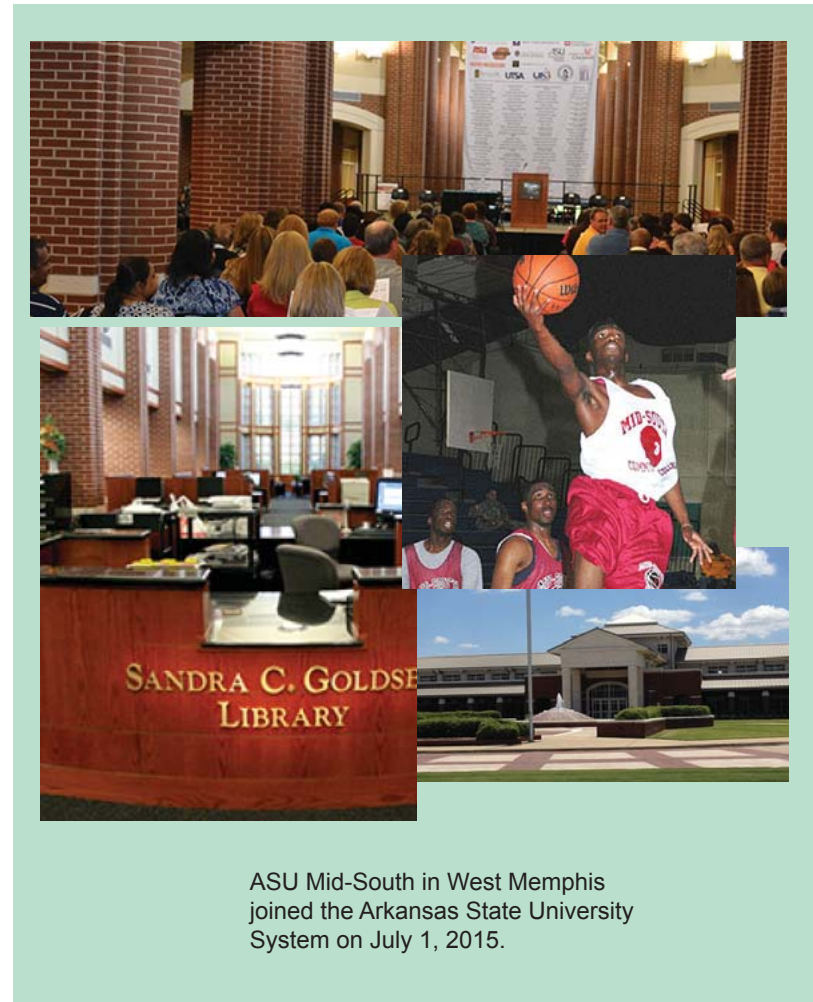
Student Demographics				
	Fall Semester		Percentage	
	2015	2016	2015	2016
Headcount by Age Categories				
Under 18	789	774	41.6%	42.2%
18 to 19	325	328	17.1%	17.9%
20 to 21	167	164	8.8%	8.9%
22 to 24	139	114	7.3%	6.2%
25 to 29	157	161	8.3%	8.8%
30 to 44	244	226	12.9%	12.3%
45 to 64	69	61	3.6%	3.3%
65 & Over	6	8	0.3%	0.4%
Age Unknown	0	0	0.0%	0.0%
Headcount by Gender				
Male	747	763	39.4%	41.6%
Female	1,149	1,073	60.6%	58.4%
Headcount by Ethnicity**				
African American	1,072	1,040	56.5%	56.6%
White American	671	623	35.4%	33.9%
Other Ethnicity	153	173	8.1%	9.4%

*NOTE: A "full-time" undergraduate student load is 12 or more semester credits.

**NOTE: "Other" includes students reported as American Indian/Alaskan Native, Asian American, Hispanic American, Hawaiian Native/Pacific Islander, those reporting two or more races, International and those whose ethnicity is unknown.

Data Sources: Mid-South Student Enrollment; Institutional Research Office, Arkansas State University Mid-South

Information Source: The Office of Institutional Effectiveness; web address: www.AState.edu/irp; email address: asuirp@AState.edu



ASU Mid-South in West Memphis joined the Arkansas State University System on July 1, 2015.

Geographic Origin of Total Enrollment

Jonesboro Campus - Fall 2016

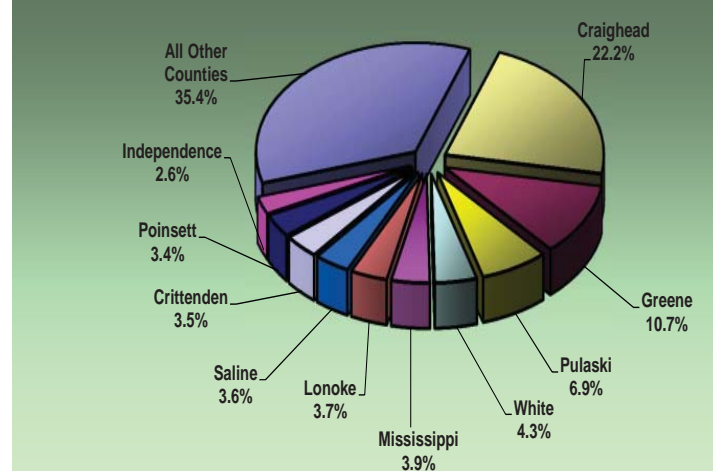
Arkansas Counties	
Arkansas+80	Lee+ 42
Ashley39	Lincoln..... 22
Baxter+224	Little River..... 12
Benton107	Logan 14
Boone58	Lonoke 390
Bradley16	Madison 6
Calhoun8	Marion 51
Carroll18	Miller 20
Chicot11	Mississippi+* 406
Clark22	Monroe+ 46
Clay+*204	Montgomery 10
Cleburne+104	Nevada..... 6
Cleveland..... 11	Newton..... 5
Columbia13	Ouachita..... 21
Conway25	Perry 9
Craighead+*2,315	Phillips+ 88
Crawford40	Pike 7
Crittenden+*368	Poinsett+* 351
Cross+*197	Polk 16
Dallas10	Pope 46
Desha31	Prairie+ 45
Drew41	Pulaski 719
Faulkner.....169	Randolph+* 190
Franklin8	Saline 372
Fulton+71	Scott 7
Garland.....147	Searcy 13
Grant.....39	Sebastian 81
Greene+* 1,115	Sevier 12
Hempstead16	Sharp+* 139
Hot Spring.....39	St. Francis+* 156
Howard22	Stone+ 54
Independence+*270	Union..... 41
Izard+68	Van Buren 17
Jackson+*150	Washington 102
Jefferson122	White+ 445
Johnson14	Woodruff+ 52
Lafayette.....2	Yell 16
Lawrence+*193	Total..... 10,416

Other U.S. States/Territories	
Missouri747	New Mexico 13
Mississippi533	Washington..... 13
Tennessee410	Nebraska 10
Texas135	Alaska 9
South Carolina.... 113	Idaho..... 8
Florida.....92	Kentucky 7
Louisiana79	Wisconsin 7
Georgia.....61	Minnesota 6
California60	South Dakota..... 5
Illinois.....59	Massachusetts..... 4
Oklahoma54	Delaware 3
Alabama51	Iowa 3
New Jersey.....44	Nevada 3
Michigan33	Oregon..... 3
Ohio25	Wyoming..... 3
Kansas.....24	Montana..... 2
New York23	New Hampshire..... 2
North Carolina23	North Dakota 2
Virginia.....23	Puerto Rico..... 2
Colorado20	Virgin Islands..... 2
Arizona19	West Virginia 2
Connecticut.....16	Dist. of Columbia ... 1
Pennsylvania16	Maine..... 1
Utah16	Rhode Island 1
Indiana.....15	Vermont 1
Maryland.....14	Total 2,818

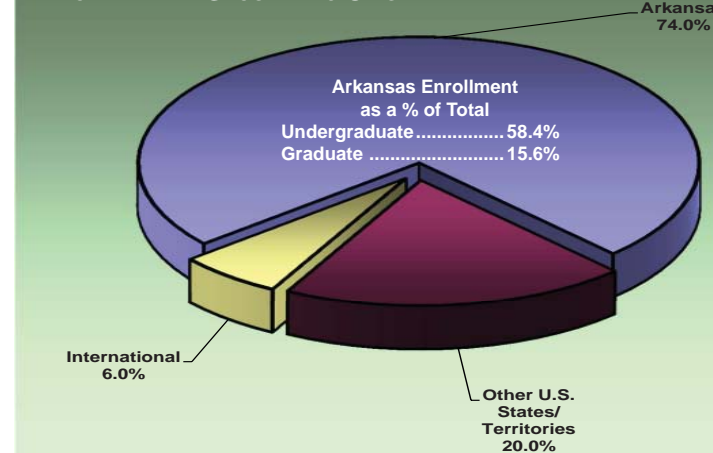
International	
Foreign Countries	851
Grand Total	14,085

+ These counties have been historically identified as being in A-State's "Draw Area". The Arkansas Department of Higher Education defines an institution's "Draw Area" as those counties in which at least 3% of the county's high school graduates from the most recent graduating class enrolled in that institution.

TOP ARKANSAS COUNTIES BY ENROLLMENT



ENROLLMENT BY GEOGRAPHIC ORIGIN

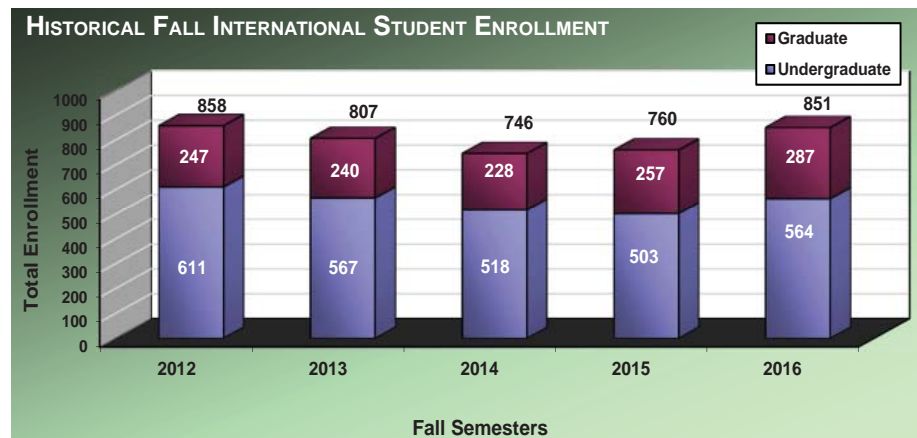
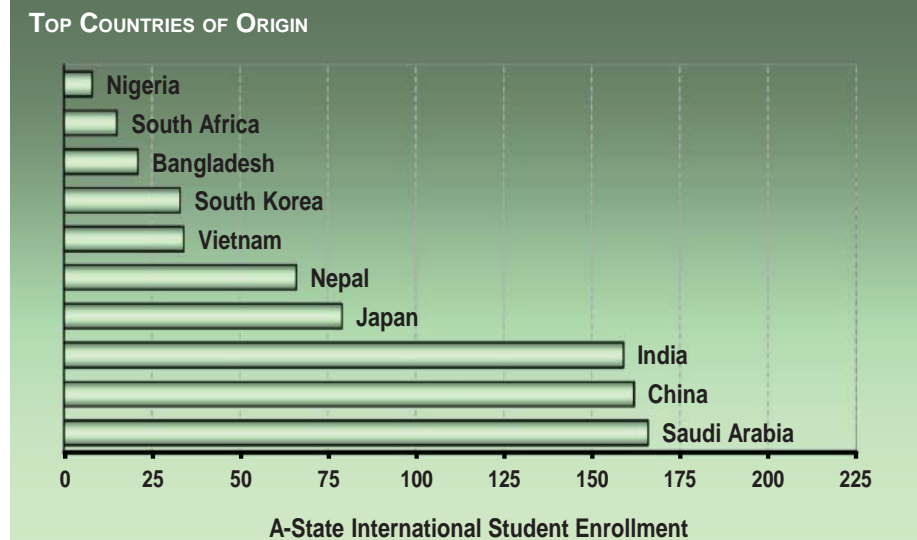


*NOTE: Counties that are within a 75 mile radius of A-State.
 Data Source: Student Enrollment Information
 Information Source: The Office of Institutional Effectiveness; web address: www.AState.edu/irp; email address: asuirp@AState.edu

Geographic Origin of International Students

Jonesboro Campus - Fall 2016

Country of Origin			
Undergraduate		Graduate	
Albania.....	0	1	
Argentina.....	1	1	
Australia.....	1	0	
Austria.....	0	1	
Azerbaijan.....	2	0	
Bahamas.....	2	0	
Bahrain.....	0	1	
Bangladesh.....	2	19	
Brazil.....	0	1	
Canada.....	2	1	
Chile.....	1	0	
China.....	126	36	
Costa Rica.....	0	1	
Croatia.....	1	0	
Czech Republic.....	1	0	
Denmark.....	1	1	
Egypt.....	2	1	
Ethiopia.....	0	1	
Finland.....	3	0	
France.....	4	1	
Gabon.....	0	1	
Germany.....	0	1	
Ghana.....	2	1	
Grenada.....	0	1	
Hondorus.....	1	0	
India.....	21	138	
Iran.....	0	1	
Israel.....	1	0	
Ivory Coast.....	1	0	
Japan.....	78	1	
Jordan.....	0	1	
Kazakhstan.....	1	0	
Kenya.....	1	0	
Kosovo.....	1	0	
Kuwait.....	7	0	
Libya.....	0	1	
Malaysia.....	1	1	
Mali.....	1	0	
Mexico.....	1	3	
Mongolia.....	1	0	
Morocco.....	0	1	
Nepal.....	45	21	
Nigeria.....	5	3	
Oman.....	2	0	
Pakistan.....	1	2	
Romania.....	1	0	
Russia.....	3	2	
Saudi Arabia.....	144	22	
Serbia & Montenegro.....	0	1	
Slovenia.....	1	0	
South Africa.....	14	1	
South Korea.....	32	1	
Spain.....	1	1	
Sri Lanka.....	1	2	
Sweden.....	2	0	
Taiwan.....	2	2	
Tanzania.....	2	1	
Thailand.....	0	2	
Turkey.....	4	1	
United Arab.....	1	0	
United Kingdom.....	6	1	
Vietnam.....	27	7	
Virgin Islands.....	2	0	
Zimbabwe.....	1	0	
Total.....	564	287	



Data Source: Student Enrollment Information
 Information Source: The Office of Institutional Effectiveness: web address: www.AState.edu/irp; email address: asuirp@AState.edu

Enrollment & SCH by Legal Residence

Jonesboro Campus - Fall 2012 to Fall 2016

Total On- & Off-Campus Enrollment by Residency Status*										
	Fall Semesters					Percentage of Total Enrollment				
	2012	2013	2014	2015	2016	2012	2013	2014	2015	2016
Total Headcount Enrollment	13,877	13,552	13,144	13,410	14,085					
Undergraduate Full-Time										
Resident	6,478	6,422	6,287	6,138	6,026	46.7%	47.4%	47.8%	45.8%	42.8%
Nonresident	1,344	1,223	1,178	1,157	1,279	9.7%	9.0%	9.0%	8.6%	9.1%
Undergraduate Part-Time										
Resident	2,126	2,222	2,139	2,014	2,229	15.3%	16.4%	16.3%	15.0%	15.8%
Nonresident	220	231	253	283	305	1.6%	1.7%	1.9%	2.1%	2.2%
Graduate Full-Time										
Resident	419	401	356	415	428	3.0%	3.0%	2.7%	3.1%	3.0%
Nonresident	360	338	305	321	328	2.6%	2.5%	2.3%	2.4%	2.3%
Graduate Part-Time										
Resident	1,766	1,466	1,446	1,656	1,794	12.7%	10.8%	11.0%	12.3%	12.7%
Nonresident	1,164	1,249	1,180	1,426	1,696	8.4%	9.2%	9.0%	10.6%	12.0%

Total On- & Off-Campus Semester Credit Hours (SCH)										
	Fall Semesters					Percentage of Total SCH				
	2012	2013	2014	2015	2016	2012	2013	2014	2015	2016
Total SCH	146,821	145,563	142,804	142,784	146,065					
Undergraduate Full-Time										
Resident	92,991	93,183	91,391	90,031	88,578	63.3%	64.0%	64.0%	63.1%	60.6%
Nonresident	18,623	16,961	16,495	16,240	17,997	12.7%	11.7%	11.6%	11.4%	12.3%
Undergraduate Part-Time										
Resident	14,166	14,258	14,459	13,694	14,651	9.6%	9.8%	10.1%	9.6%	10.0%
Nonresident	1,806	1,870	2,049	2,242	2,303	1.2%	1.3%	1.4%	1.6%	1.6%
Graduate Full-Time										
Resident	4,569	4,561	4,229	5,094	5,273	3.1%	3.1%	3.0%	3.6%	3.6%
Nonresident	3,853	3,607	3,234	3,348	3,528	2.6%	2.5%	2.3%	2.3%	2.4%
Graduate Part-Time										
Resident	6,923	6,316	6,260	6,738	7,255	4.7%	4.3%	4.4%	4.7%	5.0%
Nonresident	3,891	4,807	4,687	5,397	6,480	2.7%	3.3%	3.3%	3.8%	4.4%

*NOTE: Student residency is established for tuition assessment. A student may qualify as an Arkansas resident if he or she maintains an independent permanent residence within Arkansas for a minimum of 6 months and makes formal application to the University to establish residency.

Data Source: Student Enrollment Information

Information Source: The Office of Institutional Effectiveness: web address: www.AState.edu/irp; email address: asuipr@AState.edu

Enrollment by College & Department

Jonesboro Campus - Fall 2016

College/Department/Program	Enrollment		Total
	Undergraduate	Graduate	
COLLEGE OF AGRICULTURE & TECHNOLOGY			
Agriculture	434	43	477
Technology	53	0	53
Total Agriculture & Tech. Enrollment	487	43	530
COLLEGE OF BUSINESS			
Accounting	245	20	265
Computer & Information Technology	115	0	115
Economics & Finance	528	160	688
Management & Marketing	429	0	429
Total Business Enrollment	1,317	180	1,497
COLLEGE OF EDUCATION & BEHAVIORAL SCIENCE			
Health, Physical Education & Sport Sciences	515	106	621
Psychology & Counseling	280	119	399
School of Teacher Education & Leadership	444	2,576	3,020
Total Education & Behavioral Enrollment	1,239	2,801	4,040
COLLEGE OF ENGINEERING			
	422	68	490
COLLEGE OF FINE ARTS			
Art	172	0	172
Music	133	9	142
Theatre	33	0	33
Total Fine Arts Enrollment	338	9	347
COLLEGE OF HUMANITIES & SOCIAL SCIENCES			
Criminology, Sociology & Geography	363	19	382
English & Philosophy	151	22	173
History	107	22	129
Political Science	78	244	322
World Languages & Cultures	25	0	25
Heritage Studies Program	0	39	39
Total Humanities & Soc. Sci. Enrollment	724	346	1,070

College/Department/Program	Enrollment		Total
	Undergraduate	Graduate	
COLLEGE OF MEDIA & COMMUNICATION			
Communication	216	26	242
Media	192	24	216
Total Media & Communication Enrollment	408	50	458
COLLEGE OF NURSING & HEALTH PROFESSIONS			
Clinical Laboratory Sciences	75	0	75
Communication Disorders	110	51	161
Medical Imaging & Radiation Sciences	197	0	197
Physical Therapy	64	84	148
School of Nursing	997	223	1,220
Social Work	177	72	249
Dietetics Program	37	0	37
Disaster Preparedness Program	56	34	90
Occupational Therapy Program	76	57	133
Total Nursing & Health Prof. Enrollment	1,789	521	2,310
COLLEGE OF SCIENCES & MATHEMATICS			
Biological Sciences	594	35	629
Chemistry & Physics	161	8	169
Computer Science	155	99	254
Mathematics & Statistics	76	17	93
Environmental Sciences Program	0	24	24
Molecular Biosciences Program	0	15	15
Total Sciences & Math. Enrollment	986	198	1,184
UNIVERSITY COLLEGE			
	2,129	0	2,129
UNDECLARED GRADUATES			
	0	30	30
TOTAL ENROLLMENT			
	9,839	4,246	14,085

Data Source: Student Enrollment Information
 Information Source: The Office of Institutional Effectiveness: web address: www.AState.edu/irp; email address: asuirp@astate.edu

Undergraduate Enrollment by Degree Program

Jonesboro Campus - Fall 2016

Associate Degree Programs

COLLEGE OF AGRICULTURE & TECHNOLOGY
AS Technology 1

COLLEGE OF BUSINESS
AS Computer & Information
Technology 6

COLLEGE OF NURSING & HEALTH PROFESSIONS
AASN Nursing 246
AAS Physical Therapist Assistant 64
AAS Occupational Therapy
Assistant 76
AAS Clinical Laboratory Science 14
AAS Disaster Preparedness &
Emergency Management 3
AAS Paramedic 1

UNIVERSITY COLLEGE
AGS General Studies 8

Largest Degree Programs by Enrollment

MSE Educational Leadership 681
BSN Nursing 667
EDS Educational Leadership 604
BS Biological Sciences 515
BGS General Studies 324

Bachelor's Degree Programs

COLLEGE OF AGRICULTURE & TECHNOLOGY
BSA Agricultural Business 194
BSA Animal Science 101
BSA Plant Science 81
BS Technology 52
BSA Agricultural Studies 46
BAS Applied Science 12

COLLEGE OF BUSINESS
BS Business Administration 299
BS Accounting 245
BS Management 218
BS Finance 180
BS Marketing 120
BS Computer & Info. Technology ... 104
BS International Business 54
BS Global Supply Chain
Management 37
BA Economics 32
BS Business Economics 17
BSE Business Technology
Education 5

COLLEGE OF EDUCATION & BEHAVIORAL Sci.
BSE Elementary Education 315
BS Psychology 280
BS Exercise Science 257
BSE Middle Level Education 108
BSE Physical Education 107
BS Sport Management 105
BS Athletic Training 24
BS Health Promotion 22
BSE Special Education, K-12 21

COLLEGE OF ENGINEERING

BSME Mechanical Engineering 182
BSCE Civil Engineering 131
BSEE Electrical Engineering 93
BSEng Engineering 16

COLLEGE OF FINE ARTS

BFA Graphic Design 102
BME Instrumental Music
Education 66
BFA Art 61
BA Theatre 33
BM Music Performance 32
BME Vocal Music Education 24
BA Music 11
BA Art 9

COLLEGE OF HUMANITIES & SOCIAL SCIENCES

BA Criminology 245
BA Sociology 117
BA English 78
BA Political Science 78
BSE English Education 57
BA History 57
BSE Social Science Education 50
BA Philosophy 16
BSE World Languages & Cultures
Education 16
BA World Languages & Cultures 9
BA Geography 1

COLLEGE OF MEDIA & COMMUNICATION

BA Communication Studies 109
BS Creative Media Production 108
BS Strategic Communications 107

BS Multimedia Journalism 78
BS Journalism 4
BS Radio-Television 2

COLLEGE OF NURSING & HEALTH PROFESSIONS

BSN Nursing 667
BSRS Radiologic Sciences 197
BSW Social Work 177
BS Communication Disorders 110
BS Health Studies 84
BS Clinical Laboratory Science 61
BS Disaster Preparedness &
Emergency Management 52
BS Dietetics 37

COLLEGE OF SCIENCES & MATHEMATICS

BS Biological Sciences 515
BS Computer Science 114
BA Chemistry 103
BS Wildlife Fisheries & Conservation .. 51
BA Computer Science 41
BSE Mathematics Education 39
BS Mathematics 37
BS Chemistry 35
BS Physics 18
BS Biotechnology 16
BSE Biology Education 11
BSE Chemistry Education 4
BS Environmental Science 1
BS Forensic Science 1

UNIVERSITY COLLEGE

NDS Undeclared 1,599
BGS General Studies 324
BS Interdisciplinary Studies 198

TOTAL UNDERGRADUATES 9,839

Graduate Enrollment by Degree Program

Jonesboro Campus - Fall 2016

Graduate Certificate Programs

COLLEGE OF EDUCATION & BEHAVIORAL SCIENCE

GCert Play Therapy.....1

COLLEGE OF NURSING & HEALTH PROFESSIONS

GCert Healthcare Emergency Management.....1

Master's Degree Programs

COLLEGE OF AGRICULTURE & TECHNOLOGY

MSA Agriculture.....42

MS Vocational Technical Administration.....1

COLLEGE OF BUSINESS

MBA Business Administration.....160

MAcc Accounting.....20

COLLEGE OF EDUCATION & BEHAVIORAL SCIENCE

MSE Educational Leadership.....681

MSE Educational Theory & Practice.....309

MSE Special Ed., Instruc. Specialist (K-12)....272

MSE Special Ed., Gifted, Talented & Creative.....202

MSE Curriculum & Instruction.....165

MSE Reading Education.....112

MS Sport Administration.....84

MS College Student Personnel Services.....58

MAT Teaching.....34

MS Early Childhood Services.....24

MS Exercise Science.....21

MSE Special Ed., Instruc. Specialist (4-12).....21

MSE Special Ed., Instruc. Specialist (P-4).....18

MRC Rehabilitation Counseling.....8

MS Psychological Science.....4

MSE Early Childhood Education.....2

MSE School Counseling.....2

MSE Middle Level Education.....1

MSE Physical Education.....1

COLLEGE OF ENGINEERING

MEM Engineering Management.....52

MSEngr Engineering.....16

COLLEGE OF FINE ARTS

MM Music Performance.....8

MME Music Education.....1

COLLEGE OF HUMANITIES & SOCIAL SCIENCES

MPA Public Administration.....239

MA History.....20

MA English.....17

MA Criminal Justice.....11

MA Sociology.....8

MA Political Science.....5

MSE English Education.....5

MSE Social Science Education.....2

COLLEGE OF MEDIA & COMMUNICATION

MA Communication Studies.....26

MSMC Radio-Television.....13

MSMC Journalism.....11

COLLEGE OF NURSING & HEALTH PROFESSIONS

MSN Nursing.....118

MSN Nurse Anesthesia.....72

MSW Social Work.....72

MCD Communication Disorders.....51

MS Disaster Preparedness & Emergency Management.....33

MS Health Sciences.....18

COLLEGE OF SCIENCES & MATHEMATICS

MS Computer Science.....99

MS Biology.....27

MS Mathematics.....12

MS Environmental Science.....8

MS Chemistry.....8

MA Biological Sciences.....5

MSE Mathematics Education.....5

MS Molecular Biosciences.....4

MSE Biology Education.....3

Specialist Degree Programs

COLLEGE OF EDUCATION & BEHAVIORAL SCIENCE

EDS Educational Leadership.....604

EDS Psychology & Counseling.....46

SCCT Community College Admin. Ed.....14

EDS Reading Education.....3

Doctoral Degree Programs

COLLEGE OF EDUCATION & BEHAVIORAL SCIENCE

EDD Educational Leadership.....58

COLLEGE OF HUMANITIES & SOCIAL SCIENCES

PHD Heritage Studies.....39

COLLEGE OF NURSING & HEALTH PROFESSIONS

DPT Physical Therapy.....84

DOT Occupational Therapy.....57

DNP Nursing Practice.....15

COLLEGE OF SCIENCES & MATHEMATICS

PHD Environmental Science.....16

PHD Molecular Biosciences.....11

UNDECLARED GRADUATES

NDS Undeclared/Certification.....86

TOTAL GRADUATES 4,246

Enrollment - by College & Career

Jonesboro Campus - Fall 2012 to Fall 2016

Total Enrollment										
	Fall Semesters					Percentage of Total Enrollment				
	2012	2013	2014	2015	2016	2012	2013	2014	2015	2016
Agriculture & Technology Headcount	464	450	488	506	530	3.3%	3.3%	3.7%	3.8%	3.8%
Undergraduate	438	425	450	465	487	3.2%	3.1%	3.4%	3.5%	3.5%
Graduate	26	25	38	41	43	0.2%	0.2%	0.3%	0.3%	0.3%
Business Headcount	1,584	1,575	1,577	1,539	1,497	11.4%	11.6%	12.0%	11.5%	10.6%
Undergraduate	1,371	1,343	1,378	1,352	1,317	9.9%	9.9%	10.5%	10.1%	9.4%
Graduate	213	232	199	187	180	1.5%	1.7%	1.5%	1.4%	1.3%
Education & Behavioral Sci. Headcount	4,118	3,844	3,525	3,813	4,040	29.7%	28.4%	26.8%	28.4%	28.7%
Undergraduate	1,721	1,655	1,496	1,356	1,239	12.4%	12.2%	11.4%	10.1%	8.8%
Graduate	2,397	2,189	2,029	2,457	2,801	17.3%	16.2%	15.4%	18.3%	19.9%
Engineering Headcount	371	354	408	468	490	2.7%	2.6%	3.1%	3.5%	3.5%
Undergraduate	353	342	377	414	422	2.5%	2.5%	2.9%	3.1%	3.0%
Graduate	18	12	31	54	68	0.1%	0.1%	0.2%	0.4%	0.5%
Fine Arts Headcount	396	399	414	360	347	2.9%	2.9%	3.1%	2.7%	2.5%
Undergraduate	377	381	400	351	338	2.7%	2.8%	3.0%	2.6%	2.4%
Graduate	19	18	14	9	9	0.1%	0.1%	0.1%	0.1%	0.1%
Humanities & Social Sci. Headcount	1,115	998	983	954	1,070	8.0%	7.4%	7.5%	7.1%	7.6%
Undergraduate	867	735	687	639	724	6.2%	5.4%	5.2%	4.8%	5.1%
Graduate	248	263	296	315	346	1.8%	1.9%	2.3%	2.3%	2.5%
Media & Communication Headcount	404	401	374	379	458	2.9%	3.0%	2.8%	2.8%	3.3%
Undergraduate	303	320	317	337	408	2.2%	2.4%	2.4%	2.5%	2.9%
Graduate	101	81	57	42	50	0.7%	0.6%	0.4%	0.3%	0.4%
Nursing & Health Prof. Headcount	2,178	2,075	2,100	2,229	2,310	15.7%	15.3%	16.0%	16.6%	16.4%
Undergraduate	1,705	1,632	1,656	1,741	1,789	12.3%	12.0%	12.6%	13.0%	12.7%
Graduate	473	443	444	488	521	3.4%	3.3%	3.4%	3.6%	3.7%
Sciences & Mathematics Headcount	1,030	1,052	1,060	1,101	1,184	7.4%	7.8%	8.1%	8.2%	8.4%
Undergraduate	878	915	916	912	986	6.3%	6.8%	7.0%	6.8%	7.0%
Graduate	152	137	144	189	198	1.1%	1.0%	1.1%	1.4%	1.4%
Total Headcount	13,877	13,552	13,144	13,410	14,085					

Semester Credit Hour Production - by College & Career

Jonesboro Campus - Fiscal Year 2011-2012 to Fiscal Year 2015-2016

Total Semester Credit Hours (SCH)										
	Fiscal Years					Percentage* of Total SCH				
	2011/12	2012/13	2013/14	2014/15	2015/16	2011/12	2012/13	2013/14	2014/15	2015/16
Agriculture & Technology SCH	8,753	8,147	8,612	9,143	9,644	2.5%	2.3%	2.5%	2.7%	2.7%
Undergraduate	8,201	7,654	8,047	8,417	8,904	2.3%	2.2%	2.3%	2.5%	2.5%
Graduate	552	493	565	726	740	0.2%	0.1%	0.2%	0.2%	0.2%
Business SCH	32,309	33,430	34,720	35,299	35,903	9.1%	9.5%	10.0%	10.3%	10.2%
Undergraduate	28,944	30,165	31,004	32,186	32,510	8.1%	8.6%	8.9%	9.4%	9.2%
Graduate	3,365	3,265	3,716	3,113	3,393	0.9%	0.9%	1.1%	0.9%	1.0%
Education & Behavioral Sci. SCH	102,056	98,589	96,788	93,472	97,192	28.6%	28.0%	27.9%	27.2%	27.6%
Undergraduate	45,127	47,289	48,001	44,237	38,941	12.7%	13.4%	13.8%	12.9%	11.1%
Graduate	56,929	51,300	48,787	49,235	58,251	16.0%	14.6%	14.0%	14.4%	16.6%
Engineering SCH	3,614	3,901	4,439	5,762	6,607	1.0%	1.1%	1.3%	1.7%	1.9%
Undergraduate	3,446	3,745	4,304	5,222	5,818	1.0%	1.1%	1.2%	1.5%	1.7%
Graduate	168	156	135	540	789	<0.1%	<0.1%	<0.1%	0.2%	0.2%
Fine Arts SCH	17,496	16,638	17,070	16,107	16,046	4.9%	4.7%	4.9%	4.7%	4.6%
Undergraduate	17,090	16,344	16,815	15,890	15,877	4.8%	4.6%	4.8%	4.6%	4.5%
Graduate	406	294	255	217	169	0.1%	0.1%	0.1%	0.1%	<0.1%
Humanities & Social Sciences SCH	74,957	71,918	67,012	61,918	59,904	21.0%	20.4%	19.3%	18.0%	17.0%
Undergraduate	72,125	68,076	62,376	56,605	54,149	20.2%	19.3%	18.0%	16.5%	15.4%
Graduate	2,832	3,842	4,636	5,313	5,755	0.8%	1.1%	1.3%	1.5%	1.6%
Media & Communication SCH	11,626	13,010	12,188	12,180	12,803	3.3%	3.7%	3.5%	3.6%	3.6%
Undergraduate	10,470	11,566	11,073	11,360	12,164	2.9%	3.3%	3.2%	3.3%	3.5%
Graduate	1,156	1,444	1,115	820	639	0.3%	0.4%	0.3%	0.2%	0.2%
Nursing & Health Professions SCH	44,383	44,574	44,123	46,140	49,424	12.5%	12.6%	12.7%	13.4%	14.1%
Undergraduate	32,331	32,181	32,287	33,974	36,113	9.1%	9.1%	9.3%	9.9%	10.3%
Graduate	12,052	12,393	11,836	12,166	13,311	3.4%	3.5%	3.4%	3.5%	3.8%
Sciences & Mathematics SCH	54,380	52,457	52,733	53,385	53,675	15.3%	14.9%	15.2%	15.6%	15.3%
Undergraduate	51,722	49,986	50,517	50,762	50,300	14.5%	14.2%	14.5%	14.8%	14.3%
Graduate	2,658	2,471	2,216	2,623	3,375	0.7%	0.7%	0.6%	0.8%	1.0%
Total SCH	356,409	352,429	347,336	343,087	351,771					

*Note: There may be rounding in percentages.

Data Source: Student Enrollment Information

Information Source: The Office of Institutional Effectiveness: web address: www.AState.edu/irp; email address: asuirp@AState.edu

Full-Time Equivalent Enrollment (FTE)

Jonesboro Campus - Fiscal Year 2015-2016

College/Department/Program	FTE Enrollment		Total
	Undergraduate	Graduate	
COLLEGE OF AGRICULTURE & TECHNOLOGY			
Agriculture	237.6	30.8	268.4
Technology	59.2	0.0	59.2
Total Agriculture & Technology FTE	296.8	30.8	327.6
COLLEGE OF BUSINESS			
Accounting	203.2	28.5	231.7
Computer & Information Technology	187.9	29.8	217.7
Economics & Finance	348.1	28.0	376.1
Management & Marketing	344.5	55.1	399.6
Total Business FTE	1,083.7	141.4	1,225.1
COLLEGE OF EDUCATION & BEHAVIORAL SCIENCE			
Health, Physical Education & Sport Sci	584.8	81.0	665.8
Psychology & Counseling	361.5	70.4	431.9
School of Teacher Education & Leadership	351.8	2,275.7	2,627.5
Total Education FTE	1,298.1	2,427.1	3,725.2
COLLEGE OF ENGINEERING			
	193.9	32.9	226.8
COLLEGE OF FINE ARTS			
Art	244.4	0.0	244.4
Music	218.2	7.0	225.2
Theatre	66.6	0.0	66.6
Total Fine Arts FTE	529.2	7.0	536.2
COLLEGE OF HUMANITIES & SOCIAL SCIENCES			
Criminology, Sociology & Geography	539.7	10.0	549.7
English & Philosophy	617.1	15.9	633.0
History	316.6	13.2	329.8
Political Science	177.0	183.0	360.0
World Languages & Cultures	154.5	0.0	154.5
Heritage Studies Program	0.0	17.7	17.7
Total Humanities & Social Sciences FTE	1,804.9	239.8	2,044.7

College/Department/Program	FTE Enrollment		Total
	Undergraduate	Graduate	
COLLEGE OF MEDIA & COMMUNICATION			
Communication	266.1	9.5	275.6
Media	139.4	17.1	156.5
Total Media & Communication FTE	405.5	26.6	432.1
COLLEGE OF NURSING & HEALTH PROFESSIONS			
Clinical Laboratory Sciences	39.3	0.0	39.3
Communication Disorders	83.4	53.3	136.7
Health Professions	113.8	8.3	122.1
Medical Imaging & Radiation Sciences	106.6	0.0	106.6
Physical Therapy	47.1	137.5	184.6
School of Nursing	481.3	216.3	697.6
Social Work	117.5	75.0	192.5
Dietetics Program	57.1	0.0	57.1
Disaster Preparedness Program	122.9	26.5	149.4
Occupational Therapy Program	34.7	37.8	72.5
Total Nursing & Health Professions FTE	1,203.7	554.7	1,758.4
COLLEGE OF SCIENCES & MATHEMATICS			
Biological Sciences	621.8	23.3	645.1
Chemistry & Physics	482.2	5.0	487.2
Computer Science	89.6	72.2	161.8
Mathematics & Statistics	483.1	15.0	498.1
Environmental Sciences Program	0.0	13.5	13.5
Molecular Biosciences Program	0.0	11.5	11.5
Total Sciences & Mathematics FTE	1,676.7	140.5	1,817.2
UNIVERSITY COLLEGE			
	329.7	0.0	329.7

Full-Time Equivalent Enrollment (FTE) for the fiscal year is calculated by dividing undergraduate semester credit hours (SCH) by thirty and graduate SCH by twenty-four. (Figures have been rounded.)

Semester Credit Hour Production (SCH)

Jonesboro Campus - Fiscal Year 2015-2016

College/Department/Program	SCH Production		Total
	Undergraduate	Graduate	
COLLEGE OF AGRICULTURE & TECHNOLOGY			
Agriculture	7,128	740	7,868
Technology	1,776	0	1,776
Total Agriculture & Technology SCH	8,904	740	9,644
COLLEGE OF BUSINESS			
Accounting	6,097	684	6,781
Computer & Information Technology	5,636	714	6,350
Economics & Finance	10,443	672	11,115
Management & Marketing	10,334	1,323	11,657
Total Business SCH	32,510	3,393	35,903
COLLEGE OF EDUCATION & BEHAVIORAL SCIENCE			
Health, Physical Education & Sport Sci	17,543	1,945	19,488
Psychology & Counseling	10,844	1,690	12,534
School of Teacher Education & Leadership	10,554	54,616	65,170
Total Education SCH	38,941	58,251	97,192
COLLEGE OF ENGINEERING	5,818	789	6,607
COLLEGE OF FINE ARTS			
Art	7,333	0	7,333
Music	6,545	169	6,714
Theatre	1,999	0	1,999
Total Fine Arts SCH	15,877	169	16,046
COLLEGE OF HUMANITIES & SOCIAL SCIENCES			
Criminology, Sociology & Geography	16,191	240	16,431
English & Philosophy	18,514	382	18,896
History	9,499	317	9,816
Political Science	5,310	4,392	9,702
World Languages & Cultures	4,635	0	4,635
Heritage Studies Program	0	424	424
Total Humanities & Social Sciences SCH	54,149	5,755	59,904

College/Department/Program	SCH Production		Total
	Undergraduate	Graduate	
COLLEGE OF MEDIA & COMMUNICATION			
Communication	7,983	229	8,212
Media	4,181	410	4,591
Total Media & Communication SCH	12,164	639	12,803
COLLEGE OF NURSING & HEALTH PROFESSIONS			
Clinical Laboratory Sciences	1,178	0	1,178
Communication Disorders	2,503	1,280	3,783
Health Professions	3,413	198	3,611
Medical Imaging & Radiation Sciences	3,197	0	3,197
Occupational Therapy	1,042	908	1,950
Physical Therapy	1,414	3,300	4,714
School of Nursing	14,440	5,190	19,630
Social Work	3,525	1,800	5,325
Dietetics Program	1,713	0	1,713
Disaster Preparedness Program	3,688	635	4,323
Total Nursing & Health Professions SCH	36,113	13,311	49,424
COLLEGE OF SCIENCES & MATHEMATICS			
Biological Sciences	18,653	560	19,195
Chemistry & Physics	14,466	121	14,587
Computer Science	2,688	1,733	4,421
Mathematics & Statistics	14,493	359	14,852
Environmental Sciences Program	0	325	325
Molecular Biosciences Program	0	277	295
Total Sciences & Mathematics SCH	50,300	3,375	53,675
UNIVERSITY COLLEGE	9,891	0	9,891

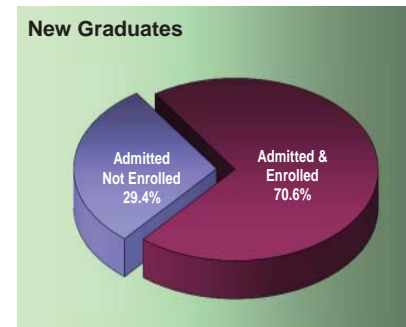
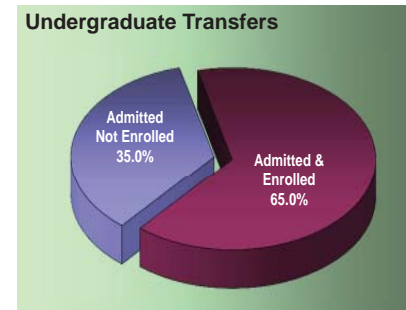
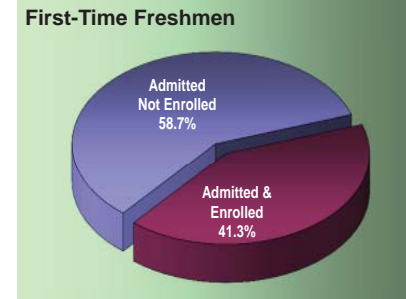
Semester credit hour (SCH) is a unit of measure that represents one student engaged in an instructional activity for a semester for which one credit hour is granted upon successful completion of the activity.

New Student Applications

Jonesboro Campus - Fall 2016

		First-Time Freshmen	Undergraduate Transfers	New Graduates	Percent of Total Applicants by Characteristic		
					First-Time Freshmen	Undergraduate Transfers	New Graduates
From Arkansas							
	Applied	3,931	1,484	1,177			
	Admitted	2,904	1,017	785	73.9%	68.5%	66.7%
	Enrolled	1,319	689	691	33.6%	46.4%	58.7%
From Out-of-State							
	Applied	1,098	525	1,822			
	Admitted	639	286	867	58.2%	54.5%	47.6%
	Enrolled	201	164	717	18.3%	31.2%	39.4%
International							
	Applied	626	96	1,153			
	Admitted	438	41	475	70.0%	42.7%	41.2%
	Enrolled	124	21	93	19.8%	21.9%	8.1%
Male							
	Applied	2,531	743	1,812			
	Admitted	1,746	489	844	69.0%	65.8%	46.6%
	Enrolled	755	336	489	29.8%	45.2%	27.0%
Female							
	Applied	3,124	1,362	2,340			
	Admitted	2,235	855	1,283	71.5%	62.8%	54.8%
	Enrolled	889	538	1,012	28.5%	39.5%	43.2%
Black, Non-Hispanic							
	Applied	1,052	437	499			
	Admitted	494	228	253	47.0%	52.2%	50.7%
	Enrolled	187	132	202	17.8%	30.2%	40.5%
White, Non-Hispanic							
	Applied	3,439	1,377	2,147			
	Admitted	2,703	970	1,268	78.6%	70.4%	59.1%
	Enrolled	1,208	658	1,103	35.1%	47.8%	51.4%
Other Ethnicity*							
	Applied	1,164	291	1,506			
	Admitted	784	146	606	67.4%	50.2%	40.2%
	Enrolled	249	84	196	21.4%	28.9%	13.0%

First-Time Admitted Applicants by Enrollment Status



*NOTE: "Other" includes students reported as American Indian/Alaskan Native, Asian American, Hispanic American, Hawaiian Native/Pacific Islander, those reporting two or more races, International and those whose ethnicity is unknown.
Data Sources: Application, Acceptance and Enrollment Information
Information Source: The Office of Institutional Effectiveness: web address: www.AState.edu/irp; email address: asuip@AState.edu

First-Time Freshmen

Jonesboro Campus - Fall 2012 to Fall 2016

Total First-Time Freshmen Enrollment										
	Fall Semesters					Percentage of First-Time Freshmen Total				
	2012	2013	2014	2015	2016	2012	2013	2014	2015	2016
Total First-Time Freshmen	1,671	1,619	1,698	1,577	1,644					
Full-Time*	1,633	1,575	1,681	1,542	1,609	97.7%	97.3%	99.0%	97.8%	97.9%
Part-Time	38	44	17	35	35	2.3%	2.7%	1.0%	2.2%	2.1%
Avg. Hours Enrolled per Semester	14.3	14.3	14.6	14.6	14.5					
Full-Time	14.4	14.5	14.7	14.8	14.7					
Part-Time	7.6	7.5	6.9	8.3	6.6					

First-Time Freshmen Student Demographics										
	Fall Semesters					Percentage of First-Time Freshmen Total				
	2012	2013	2014	2015	2016	2012	2013	2014	2015	2016
Average Age of First-Time Freshmen	18.5	18.3	18.3	18.3	18.3					
Headcount by Gender										
Male	747	706	774	727	755	44.7%	43.6%	45.6%	46.1%	45.9%
Female	924	913	924	850	889	55.3%	56.4%	54.4%	53.9%	54.1%
Headcount by Ethnicity										
African American	261	226	180	164	187	15.6%	14.0%	10.6%	10.4%	11.4%
American Indian/Alaskan Native	8	5	9	2	7	0.5%	0.3%	0.5%	0.1%	0.4%
Asian American	9	12	12	13	14	0.5%	0.7%	0.7%	0.8%	0.9%
Hispanic American	41	33	50	46	56	2.5%	2.0%	2.9%	2.9%	3.4%
Native Hawaiian/Pacific Islander	1	0	5	0	0	0.1%	0.0%	0.3%	0.0%	0.0%
Two or More Races	36	54	41	37	37	2.2%	3.3%	2.4%	2.3%	2.3%
White American	1,219	1,230	1,334	1,223	1,208	73.0%	76.0%	78.6%	77.6%	73.5%
Ethnicity Unknown	14	5	5	3	11	0.8%	0.3%	0.3%	0.2%	0.7%
International	82	54	62	89	124	4.9%	3.3%	3.7%	5.6%	7.5%

*NOTE: A "full-time" undergraduate student load is 12 or more semester credits.
 Data Sources: Student Enrollment Information
 Information Source: The Office of Institutional Effectiveness: web address: www.AState.edu/irp; email address: asuipr@AState.edu

Academic Preparation - Admission Test Scores

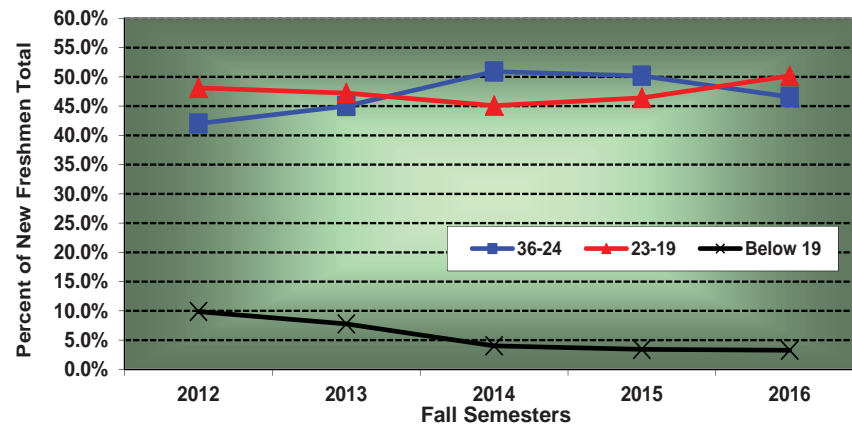
Jonesboro Campus

23.6 Average ACT Composite Score for Jonesboro Campus - Fall 2016

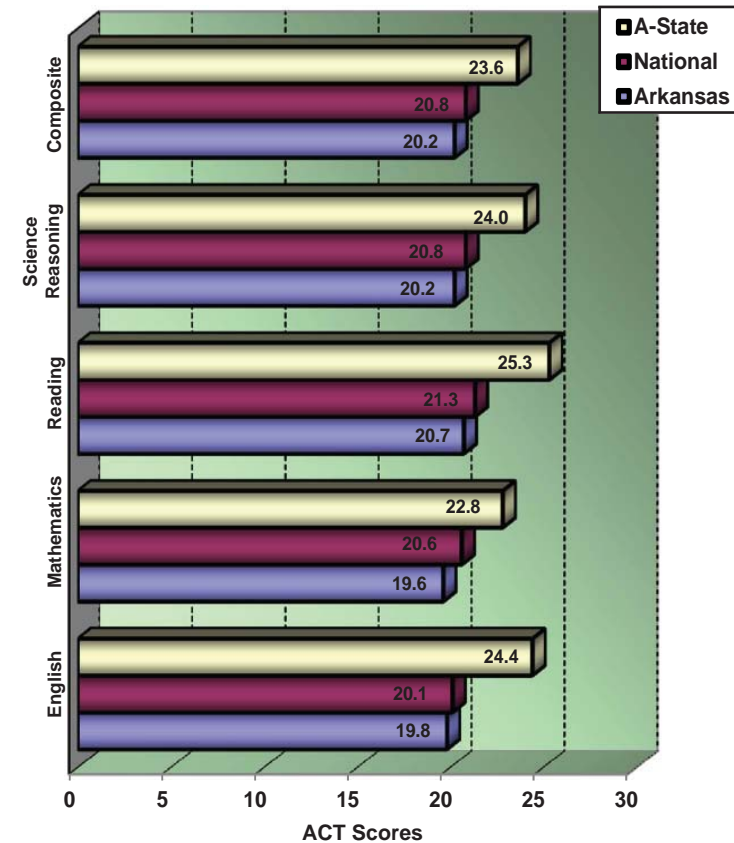
HISTORICAL COMPOSITE ACT SCORE DISTRIBUTION FOR FIRST-TIME FRESHMEN
Fall Semesters

Composite Score	Fall Semesters				
	2012	2013	2014	2015	2016
30-36	57	72	128	95	112
24-29	590	617	684	640	587
19-23	741	723	719	680	753
Below 19	152	119	64	50	49
SAT/ASSET/COMPASS	131	88	103	112	143
Average High School GPA	3.37	3.44	3.47	3.51	3.48

HISTORICAL COMPOSITE ACT SCORE DISTRIBUTION PERCENTAGES
Fall Semesters



A-STATE ACT AVERAGES VS. NATIONAL & STATE AVERAGES
Fall 2016



Data Sources: Student Enrollment Information; American College Testing (ACT)
Information Source: The Office of Institutional Effectiveness: web address: www.AState.edu/irp; email address: asuipr@AState.edu

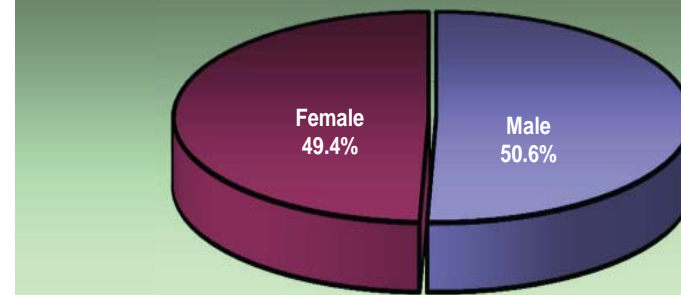
Academic Preparation - Remediation

Jonesboro Campus

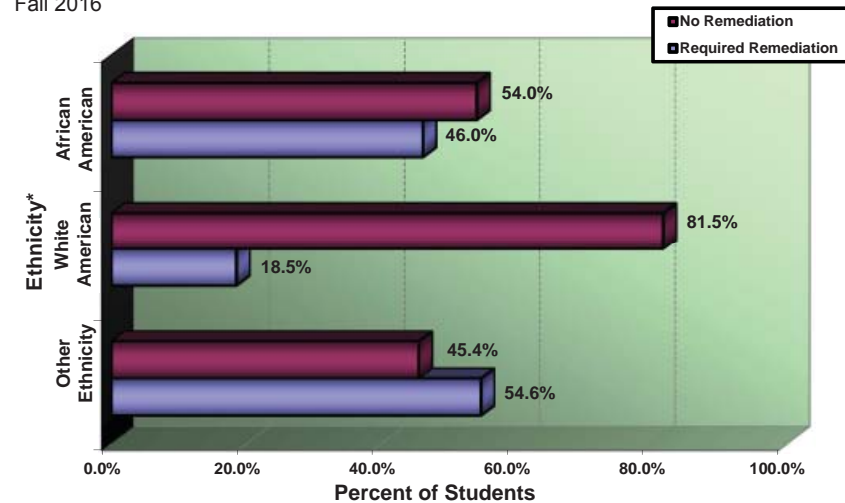
NUMBER OF FIRST-TIME FRESHMEN REQUIRING REMEDIATION BY SUBJECT
Fall Semesters

Subject	Fall Semesters				
	2012	2013	2014	2015	2016
English	194	152	134	170	204
Mathematics	350	296	271	234	283
Reading	181	145	106	143	164
Unduplicated Count	507	424	383	354	445
% Requiring Remediation	30.3%	26.2%	22.6%	22.4%	27.1%

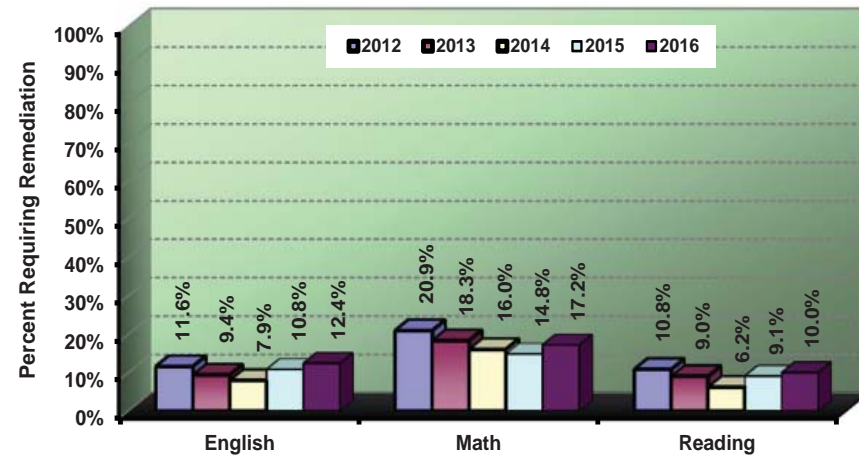
GENDER DISTRIBUTION OF FIRST-TIME FRESHMEN REQUIRING REMEDIATION
Fall 2016



FIRST-TIME FRESHMAN REMEDIATION ASSESSMENT BY ETHNICITY
Fall 2016



PERCENT OF FIRST-TIME FRESHMEN REQUIRING REMEDIATION
Fall Semesters



*NOTE: "Other" includes students reported as American Indian/Alaskan Native, Asian American, Hispanic American, Hawaiian Native/Pacific Islander, those reporting two or more races, International and those whose ethnicity is unknown.
Data Source: Student Enrollment Information
Information Source: The Office of Institutional Effectiveness; web address: www.AState.edu/irp; email address: asuirp@AState.edu

Academic Progress - Retention Rates

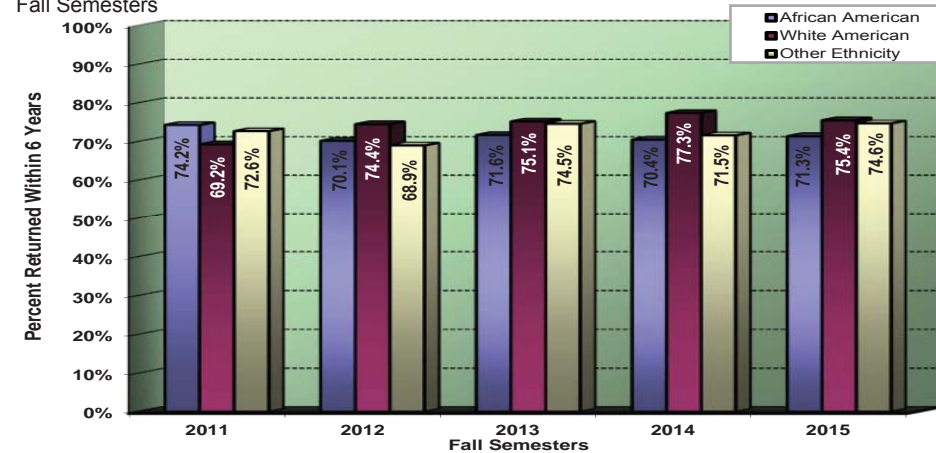
Jonesboro Campus

The most recent one-year retention rate is 74.9%.

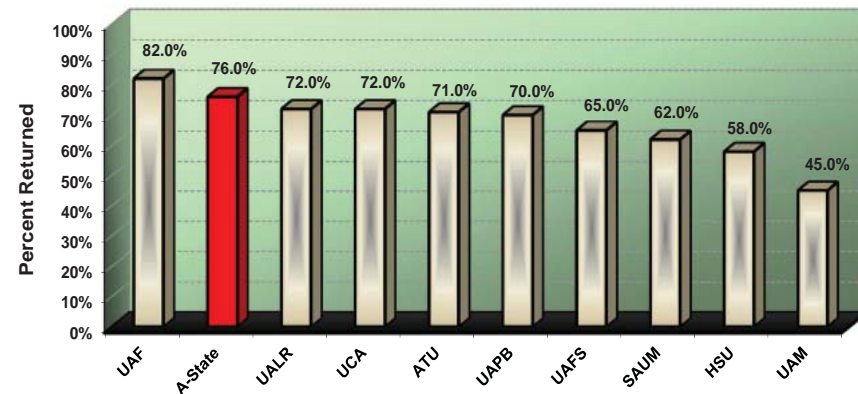
HISTORICAL RETENTION RATES FOR FULL-TIME, FIRST-TIME FRESHMEN
Fall Semesters

Fall Semesters	Cohort Size	Fall to Fall Retention* After	
		1 Year	2 Years
2005	1,491	71.9%	55.2%
2006	1,663	68.6%	56.6%
2007	1,666	68.3%	56.3%
2008	1,752	67.9%	52.5%
2009	1,650	70.8%	54.8%
2010	1,665	71.3%	60.2%
2011	1,505	70.4%	61.4%
2012	1,633	73.1%	61.2%
2013	1,575	74.5%	63.7%
2014	1,681	76.0%	65.2%
2015	1,542	74.9%	

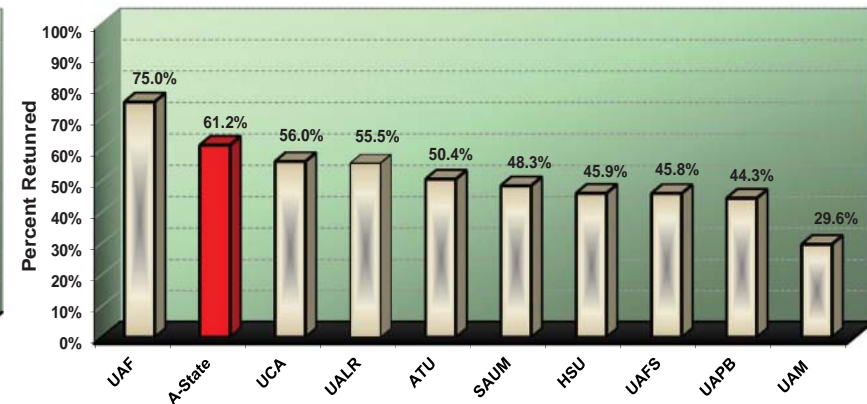
HISTORICAL RETENTION RATES FOR FULL-TIME, FIRST-TIME FRESHMEN BY ETHNICITY
Fall Semesters



FALL 2013 TO FALL 2014 ONE-YEAR RETENTION RATES (AR Public 4-Yr. Institutions)



FALL 2012 TO FALL 2014 TWO-YEAR RETENTION RATES (AR Public 4-Yr. Institutions)



Data Sources: Student Enrollment Information and The Integrated Postsecondary Education Data System (IPEDS)
Information Source: The Office of Institutional Effectiveness: web address: www.AState.edu/irp; email address: asuirp@AState.edu

Academic Progress - Graduation Rates

Jonesboro Campus

The most recent graduation rate within 150% of time is 45.4%.

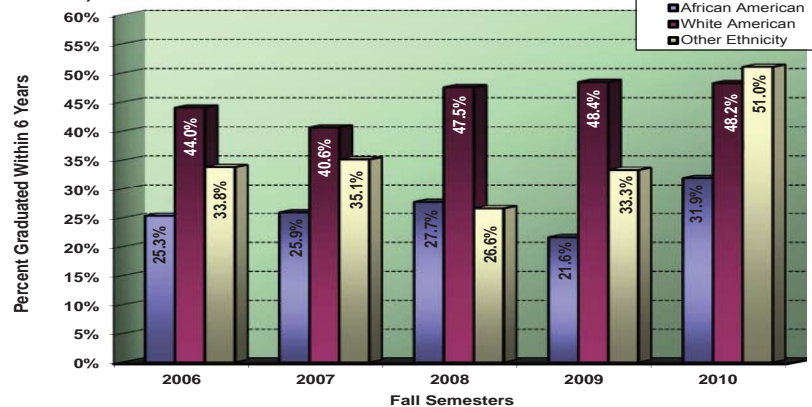
HISTORICAL GRADUATION RATES* FOR FULL-TIME, FIRST-TIME FRESHMEN

Fall Semesters	Cohort	Adjusted Cohort	Total Completers Within 150% of Time	Graduating with Bachelor's			
				Within 150% of Time			Within 200% of Time
				4 Years	5 Years	6 Years	8 Years
2003	1,433	1,426	37.2%	16.3%	30.4%	36.6%	40.3%
2004	1,303	1,296	33.7%	16.4%	28.0%	33.4%	37.6%
2005	1,491	1,483	38.4%	19.4%	32.5%	38.0%	39.3%
2006	1,663	1,659	39.5%	20.8%	33.8%	39.1%	40.7%
2007	1,666	1,655	37.0%	18.7%	31.2%	35.7%	40.4%
2008	1,752	1,743	39.3%	20.2%	32.0%	37.2%	40.6%
2009	1,650	1,645	40.1%	21.2%	34.7%	38.8%	
2010	1,665	1,659	45.4%	26.4%	39.2%	43.9%	

HISTORICAL 5-YEAR GRADUATION RATES FOR FULL-TIME, UNDERGRADUATE TRANSFER STUDENTS

Fall Semesters	Cohort Size	Percent Graduated
2002	614	58.3%
2003	632	53.5%
2004	657	52.8%
2005	637	56.4%
2006	568	58.1%
2007	626	57.8%
2008	603	57.2%
2009	628	57.5%
2010	689	56.9%
2011	700	56.4%
Average 2002-2011	635	56.5%

HISTORICAL SIX-YEAR GRADUATION RATES FOR FULL-TIME, FIRST-TIME FRESHMEN BY ETHNICITY**



HISTORICAL SIX-YEAR GRADUATION RATES FOR FULL-TIME STUDENT ATHLETES WITH ATHLETIC AID

Fall Semesters	First-Time Freshmen		Undergraduate Transfers	
	Cohort Size	Percent Graduated	Cohort Size	Percent Graduated
2001	39	64.1%	30	63.3%
2002	34	44.1%	26	73.1%
2003	41	58.5%	27	59.3%
2004	49	65.3%	14	50.0%
2005	55	50.9%	27	63.0%
2006	57	52.6%	23	56.5%
2007	64	51.6%	21	71.4%
2008	64	59.4%	18	83.3%
2009	63	58.7%	23	78.3%
Average 2001-2009	52	56.2%	23	66.5%

*NOTE: Graduates Rates are cumulative and based on IPEDS Methodology. Graduation Rates within 150% of time represents students earning an associate degree within 3 years and students earning a bachelor's degree within 4-5 or 6 years. Graduation Rates with 200% of time includes students earning a bachelor's degree within 7-8 years. Adjusted Cohort reflects the original fall cohort after allowable exclusions: Students who died or became permanently disabled; Students who left school to serve in the armed forces; students who left school to serve with a foreign aid service of the Federal Government; and students who left school to serve on an official church mission.

**NOTE: "Other" includes students reported as American Indian/Alaskan Native, Asian American, Hispanic American, Native Hawaiian/Pacific Islander, those reporting two or more races, International and those whose ethnicity is unknown.

Data Sources: Student Enrollment Information; NCAA Division I Graduation Rate Reports

Information Source: The Office of Institutional Effectiveness: web address: www.AState.edu/irp; email address: asuipr@AState.edu

Undergraduates

Jonesboro Campus - Fall 2012 to Fall 2016

Total Undergraduates										
	Fall Semesters					Percentage of Undergraduate Total				
	2012	2013	2014	2015	2016	2012	2013	2014	2015	2016
Total Undergraduates	10,168	10,098	9,857	9,592	9,839					
All Freshmen	2,658	2,447	2,348	2,173	2,205	26.1%	24.2%	23.8%	22.7%	22.4%
Sophomore	1,814	1,829	1,796	1,778	1,702	17.8%	18.1%	18.2%	18.5%	17.3%
Junior	2,243	2,146	2,155	2,157	2,194	22.1%	21.3%	21.9%	22.5%	22.3%
Senior	2,736	2,859	2,807	2,766	2,807	26.9%	28.3%	28.5%	28.8%	28.5%
Headcount by Load										
Full-Time	7,822	7,645	7,465	7,295	7,305	76.9%	75.7%	75.7%	76.1%	74.2%
Part-Time	2,346	2,453	2,392	2,297	2,534	23.1%	24.3%	24.3%	23.9%	25.8%
Undergraduate Demographics										
	Fall Semesters					Percentage of Undergraduate Total				
	2012	2013	2014	2015	2016	2012	2013	2014	2015	2016
Headcount by Age										
Under 25	7,716	7,836	7,776	7,737	7,931	75.9%	77.6%	78.9%	80.7%	80.6%
25 & Older	2,452	2,262	2,081	1,855	1,908	24.1%	22.4%	21.1%	19.3%	19.4%
Headcount by Gender										
Male	4,330	4,279	4,208	4,112	4,185	42.6%	42.4%	42.7%	42.9%	42.5%
Female	5,838	5,819	5,649	5,480	5,654	57.4%	57.6%	57.3%	57.1%	57.5%
Headcount by Ethnicity										
African American	1,563	1,410	1,364	1,272	1,256	15.4%	14.0%	13.8%	13.3%	12.8%
American Indian/Alaskan Native	47	39	41	34	28	0.5%	0.4%	0.4%	0.4%	0.3%
Asian American	73	79	76	77	83	0.7%	0.8%	0.8%	0.8%	0.8%
Hispanic American	207	211	229	246	260	2.0%	2.1%	2.3%	2.6%	2.6%
Native Hawaiian/Pacific Islander	7	9	13	8	7	0.1%	0.1%	0.1%	0.1%	0.1%
Two or More Races	133	167	171	189	200	1.3%	1.7%	1.7%	2.0%	2.0%
White American	7,342	7,477	7,361	7,197	7,368	72.2%	74.0%	74.7%	75.0%	74.9%
Ethnicity Unknown	185	139	84	66	73	1.8%	1.4%	0.9%	0.7%	0.7%
International	611	567	518	503	564	6.0%	5.6%	5.3%	5.2%	5.7%

Data Source: Student Enrollment Information
 Information Source: The Office of Institutional Effectiveness: web address: www.AState.edu/irp; email address: asuirp@astate.edu

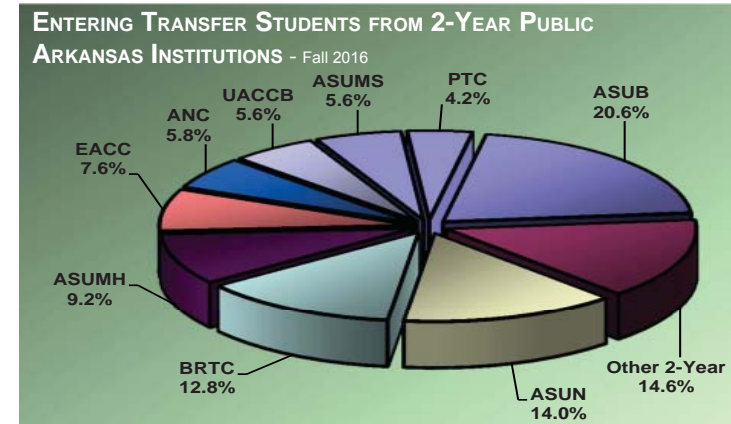
Undergraduate Transfer Students



Jonesboro Campus

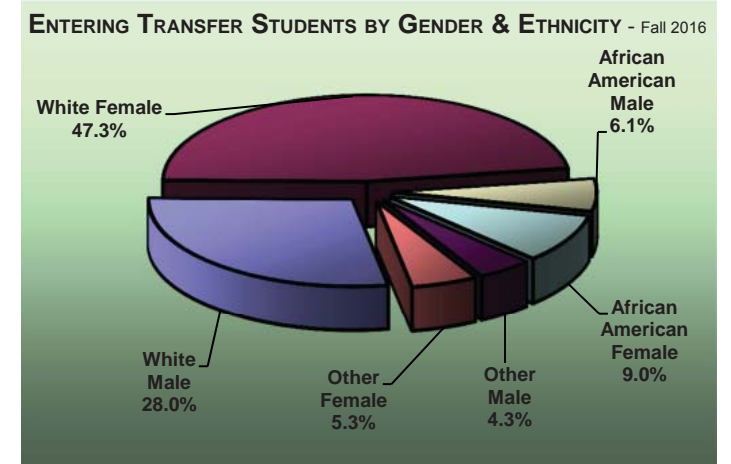
HISTORICAL ENTERING TRANSFER STUDENTS BY ORIGINATING ARKANSAS PUBLIC INSTITUTION

Students Transferring to A-State from the Following Originating Institutions	Fall Semesters				
	2012	2013	2014	2015	2016
University of Arkansas-Fayetteville	16	19	11	17	18
University of Arkansas-Little Rock	14	12	8	8	11
University of Central Arkansas	39	14	26	18	28
Other 4-Year Public Institutions	33	23	44	27	32
Arkansas State University-Beebe	131	136	111	142	103
Arkansas State University-Mountain Home	45	47	40	55	46
Arkansas State University-Newport	69	65	71	57	70
Arkansas State University Mid-South	--	--	--	27	28
Other 2-Year Public Institutions	360	322	292	250	253
Total Entering Transfers	707	638	603	601	589



HISTORICAL ENTERING TRANSFER STUDENTS BY TOP DEGREE PROGRAMS

Students Entering A-State into the Following Top Degree Programs		Fall Semesters				
		2012	2013	2014	2015	2016
BSN	Nursing	94	77	85	69	60
BS	Accounting	41	33	38	48	23
BGS	General Studies	--	--	3	48	34
BSE	Early Childhood Education	116	97	72	45	37
BSE	Middle Level Education	82	56	40	36	24
BA	Criminology	48	24	35	34	42
AASN	Nursing	32	29	26	33	27
BS	Business Administration	34	33	27	31	30
BS	Management	29	34	30	31	24
BS	Psychology	24	25	22	28	24



Data Source: Student Enrollment Information
 Information Source: The Office of Institutional Effectiveness: web address: www.AState.edu/irp; email address: asuip@AState.edu

Graduates



Jonesboro Campus - Fall 2012 to Fall 2016

Total Graduates										
	Fall Semesters					Percentage of Graduate Total				
	2012	2013	2014	2015	2016	2012	2013	2014	2015	2016
Total Graduates	3,709	3,454	3,287	3,818	4,246					
Master's Specialist	2,943	2,593	2,477	2,911	3,213	79.3%	75.1%	75.4%	76.2%	75.7%
Doctoral	376	506	490	546	667	10.1%	14.6%	14.9%	14.3%	15.7%
Other Graduates	243	222	227	269	280	6.6%	6.4%	6.9%	7.0%	6.6%
Other Graduates	147	133	93	92	86	4.0%	3.9%	2.8%	2.4%	2.0%
Headcount by Load										
Full-Time*	779	739	661	736	756	21.0%	21.4%	20.1%	19.3%	17.8%
Part-Time	2,930	2,715	2,626	3,082	3,490	79.0%	78.6%	79.9%	80.7%	82.2%
Graduate Demographics										
	Fall Semesters					Percentage of Graduate Total				
	2012	2013	2014	2015	2016	2012	2013	2014	2015	2016
Graduate Students by Enrollment Status Category										
New Graduate Students	1,394	1,303	1,262	1,510	1,501	37.6%	37.7%	38.4%	39.5%	35.4%
A-State Graduates Returning	2,315	2,151	2,025	2,308	2,745	62.4%	62.3%	61.6%	60.5%	64.6%
Headcount by Gender										
Male	1,135	1,107	1,139	1,334	1,440	30.6%	32.0%	34.7%	34.9%	33.9%
Female	2,574	2,347	2,148	2,484	2,806	69.4%	68.0%	65.3%	65.1%	66.1%
Headcount by Ethnicity										
African American	545	513	470	516	580	14.7%	14.9%	14.3%	13.5%	13.7%
American Indian/Alaskan Native	19	18	30	20	31	0.5%	0.5%	0.9%	0.5%	0.7%
Asian American	16	18	26	34	33	0.4%	0.5%	0.8%	0.9%	0.8%
Hispanic American	59	56	64	78	90	1.6%	1.6%	1.9%	2.0%	2.1%
Native Hawaiian/Pacific Islander	0	1	3	4	3	0.0%	<0.1%	0.1%	0.1%	0.1%
Two or More Races	45	44	38	53	49	1.2%	1.3%	1.2%	1.4%	1.2%
White American	2,730	2,518	2,383	2,799	3,080	73.6%	72.9%	72.5%	73.3%	72.5%
Ethnicity Unknown	48	46	45	57	93	1.3%	1.3%	1.4%	1.5%	2.2%
International	247	240	228	257	287	6.7%	6.9%	6.9%	6.7%	6.8%

*NOTE: A "full-time" graduate student load is 9 or more semester credits.

Data Source: Student Enrollment Information

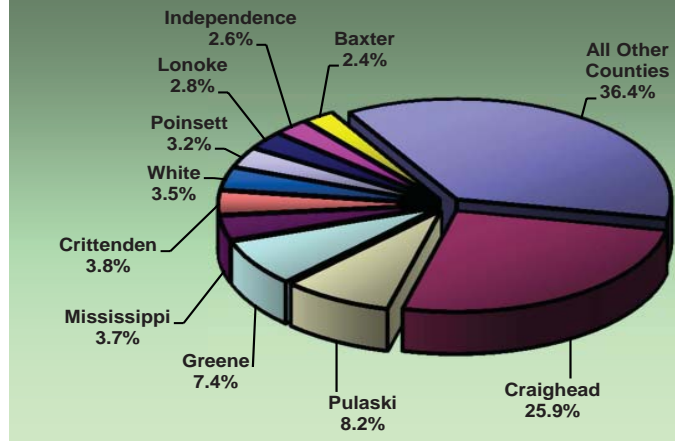
Information Source: The Office of Institutional Effectiveness: web address: www.AState.edu/irp; email address: asuipr@AState.edu

Alumni Statistics

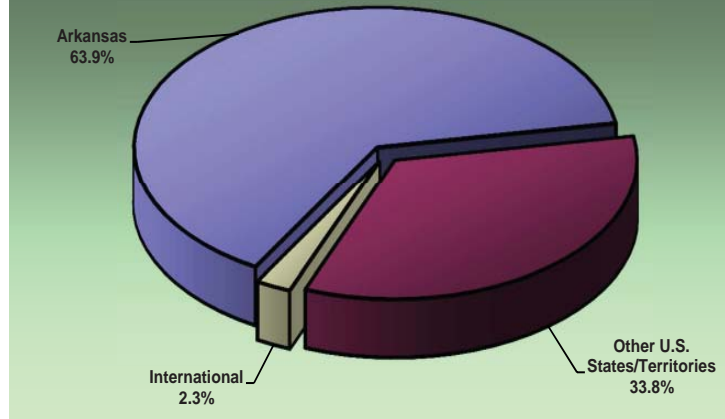
Geographic Origin of Alumni from Jonesboro Campus (as of November 2016)

Arkansas Counties		Other U.S. States/Territories	
Arkansas.....370	Lee 199	Missouri 5,629	Wisconsin 121
Ashley83	Lincoln 47	Tennessee 4,321	Nevada 109
Baxter 1,247	Little River 35	Texas 3,116	Oregon..... 101
Benton 1,022	Logan 56	Mississippi 2,040	Utah 95
Boone 248	Lonoke..... 1,442	Florida..... 1,518	Nebraska 91
Bradley 35	Madison 26	Georgia 939	Minnesota 81
Calhoun 16	Marion 236	California 935	Massachusetts..... 76
Carroll 80	Miller 68	Oklahoma 705	Idaho 68
Chicot 34	Mississippi 1,940	Illinois..... 699	Alaska 67
Clark 87	Monroe 227	Louisiana 687	Connecticut..... 57
Clay 859	Montgomery 30	Alabama 628	Montana..... 55
Cleburne..... 476	Nevada 24	Virginia..... 532	Dist. of Columbia ... 37
Cleveland..... 41	Newton 30	North Carolina 500	Hawaii 35
Columbia 46	Ouachita 69	South Carolina..... 459	New Hampshire 30
Conway 82	Perry 26	Colorado 394	South Dakota..... 31
Craighead..... 13,404	Phillips 378	Kansas 370	West Virginia 36
Crawford..... 259	Pike 30	Kentucky..... 334	Wyoming..... 32
Crittenden 1,953	Poinsett 1,641	Arizona 317	Maine..... 26
Cross 1,093	Polk 49	Ohio 298	Delaware 18
Dallas..... 12	Pope 242	Indiana..... 253	Rhode Island 15
Desha 94	Prairie 233	Michigan 251	North Dakota 10
Drew 99	Pulaski 4,259	Washington..... 233	Vermont 10
Faulkner..... 994	Randolph 1,057	New York 214	
Franklin..... 80	Saline 1,039	Maryland..... 192	
Fulton..... 517	Scott 27	New Jersey..... 160	
Garland..... 662	Searcy 54	Pennsylvania 180	
Grant..... 117	Sebastian 645	Iowa 129	
Greene..... 3,848	Sevier 50	New Mexico 127	
Hempstead 55	Sharp 733		
Hot Spring..... 114	St. Francis 869		
Howard 30	Stone 275		
Independence... 1,328	Union 135		
Izard..... 519	Van Buren..... 128		
Jackson 851	Washington..... 970		
Jefferson 375	White 1,836		
Johnson 62	Woodruff..... 280		
Lafayette..... 16	Yell 56		
Lawrence..... 1,095	Total 51,744		
		International	
		Foreign Countries..... 1,898	
		All Alumni	
		Grand Total..... 81,003	

TOP ARKANSAS ALUMNI COUNTS BY COUNTY
November 2016



ALUMNI NATIONWIDE
November 2016



Data Source: Office of Alumni Relations, Arkansas State University
Information Source: The Office of Institutional Effectiveness: web address: www.AState.edu/irp; email address: asuir@AState.edu

Student Athletes

COLORS: Scarlet & Black

MASCOT: Red Wolves

SPIRIT CHARACTER: HOW!

AFFILIATION:

Arkansas State University fields sixteen sports - seven for men and nine for women - in NCAA Division I. A-State's football program competes in NCAA Football Bowl Sub-division (FBS).

CONFERENCE:

A-State belongs to the Sun Belt Conference (SBC) in all sports with the exception of bowling.

ACADEMICS:

◆ Four athletics programs – women's bowling, women's golf, women's tennis and men's cross country – earned a Public Recognition Award from the NCAA for earning multi-year Academic Progress Rates (APR) in the top 10 percent of all teams in each sport.

◆ The women's basketball team won the league's Team Academic Award for having the highest GPA of any women's basketball team in the conference.

◆ A-State placed a school-record 211 student-athletes on the most recent Athletics Director's Honor Roll, helping the Red Wolves achieve a new all-time high with a 3.07 all-department GPA for the 2015 fall semester. Ten teams ended last semester with at least a 3.1 GPA and 31 students compiled a 4.0 GPA.

◆ Senior punter Luke Ferguson was named to the College Sports Information Directors of America (CoSIDA) Academic All-District VI Football Team as a first team selection.

◆ The women's soccer team earned a National Soccer Coaches Association of America College (NSCAA) Team Academic Award for its outstanding performance in the classroom (3.35 GPA) during the 2014-15 academic year.

◆ The volleyball squad was honored with a Team Academic Award from the American Volleyball Coaches Association for maintaining at least a 3.30 cumulative team GPA.

◆ Six student athletes on the track and field teams, along with the entire women's team, were selected to the U.S. Track & Field and Cross Country Association All-Academic Team for the 2014-15 season.

COMPETITIVE PERFORMANCE:

◆ The football team claimed the Sun Belt Conference championship for the fourth time over the last five seasons and accepted an invitation to play in the 2015 R+L Carriers New Orleans Bowl at the Mercedes-Benz Superdome.

◆ The football team played a league-high and school-record 16 players, including five first team selections, on the All-Sun Belt Conference Team. The Red Wolves' 16 players tied the 2002 North Texas team for the most ever in league history.

◆ Senior quarterback Fredi Knighten was one of 30 FBS student-athletes selected as a candidate for the 2015 Senior CLASS Award, recognizing the top college football players in the nation who excel both on and off the field of competition.

◆ The volleyball squad moved up to a school-record No. 24 in the Nov. 30 installment of the American Volleyball Coaches Association (AVCA) Top-25 Poll.

◆ The volleyball team won the 2015 Sun Belt Conference regular-season championship and clinched the No. 1 seed in the league tournament with a 25-1 overall record and 16-0 conference mark.

◆ The volleyball team won the Sun Belt Conference Tournament, advancing to the NCAA Tournament for the first time since 1999 and fifth time in school history.

◆ Freshman outside hitter Carlisa May was named to the American Volleyball Coaches Association (AVCA) Division I All-America Team as an honorable mention selection.

◆ The volleyball team placed four players on the American Volleyball Coaches Association (AVCA) Southwest All-Region Team, while Carlia May was named the region's Freshman of the Year and head coach David Rehr the region's Coach of the Year.

◆ The volleyball team had a league-best five players earn All-Sun Belt Conference recognition, while it also claimed four individual awards including Freshman of the Year, Defensive Student-Athlete of the Year, Setter of the Year and Coach of the Year.

◆ The men's cross country team finished 12th of 24 teams at the NCAA South Central Regional for its highest finish at the meet in school history. The women's team, which placed 14th of 19 teams, collected a top-15 finish for the sixth straight year.

◆ For the first time in school history, both the women's and men's cross country squads were ranked in the United States Track and Field & Cross Country Association

South Central Region Ranking at 11 and 14, respectively.

◆ The women's basketball team won the Sun Belt Conference regular-season championship and accepted an invitation to play in the 2016 WNIT.

◆ Senior women's basketball guard Aundrea Gamble was named to the Senior CLASS Award All-America Second Team. Gamble and senior Khadija Brown-Haywood were both named first team selections on the All-Sun Belt Conference Team, while fellow senior Brittney Gill earned third-team accolades. Gamble became the first player in Sun Belt history to be named the league's Women's Basketball Student-Athlete of the Year three times, and head coach Brian Boyer was tabbed the conference's Coach of the Year for the fourth time of his career.

SPECIAL EVENT, TICKETS, REVENUE & FACILITIES

◆ The football team wrapped up its 2016 spring camp by holding its annual spring game that gave three celebrity coaches, including Demario Davis, Don Jones and Thayer Evans the opportunity to roam the sidelines.

◆ The American Football Coaches Association (AFCA) announced head football coach Blake Anderson has been elected to the organization's Board of Trustees, which formulates policy and provides direction for the AFCA.

◆ Jonesboro Mayor Harold Perrin issued an official proclamation recognizing the Arkansas State football program for its accomplishment's during the 2015 season.

◆ Jonesboro Mayor Harold Perrin issued an official proclamation recognizing the volleyball squad for its accomplishments during the 2015 season.

◆ The Sun Belt Conference announced its largest television package ever for basketball available on ESPN3.

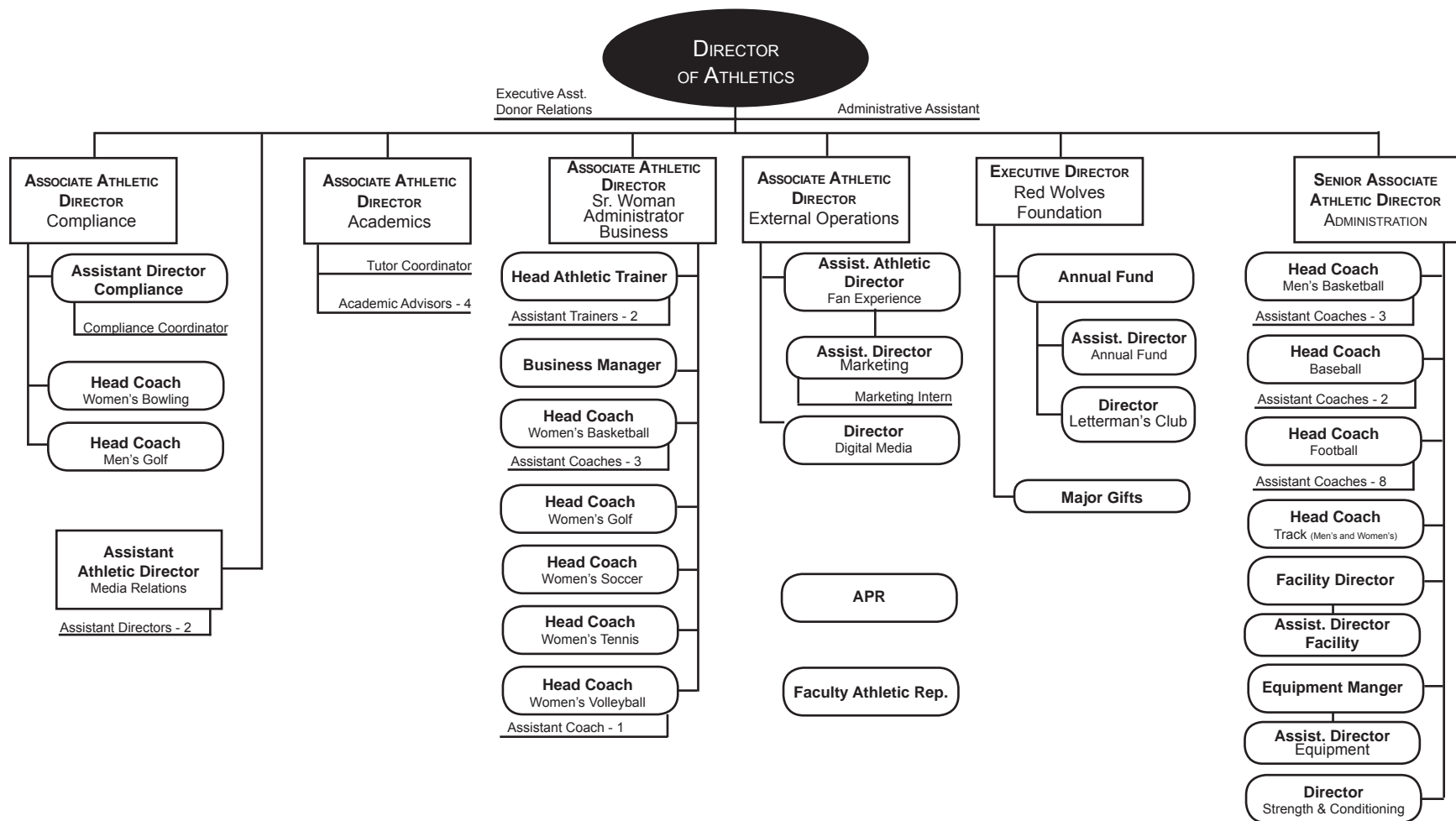
STUDENT ATHLETE PARTICIPATION* – 2016-2017

Football.....	109
Baseball.....	34
Men's Basketball.....	14
Women's Basketball.....	12
Women's Bowling.....	10
Men's Cross Country/Track & Field.....	38
Women's Cross Country/Track & Field.....	38
Men's Golf.....	10
Women's Golf.....	10
Women's Soccer.....	24
Women's Tennis.....	7
Women's Volleyball.....	12

*NOTE: Athletic participants who played on multiple teams are counted in each sport and produce a duplicated count.
 Data Source: Athletic Administration, Arkansas State University-Jonesboro
 Information Source: The Office of Institutional Effectiveness: web address: www.AState.edu/irp; email address: asuipr@AState.edu

Athletic Administration, A-State

2016 - 2017 Organizational Structure



Data Source: Athletic Administration, Arkansas State University
 Information Source: The Office of Institutional Effectiveness: web address: www.AState.edu/irp; email address: asuirp@AState.edu

Dean B. Ellis Library



Library	Fiscal Years				
	2012	2013	2014	2015	2016
Holdings					
Books (volumes)	787,237	1,093,849	932,056	838,243	862,790
Current Periodicals (# of subscriptions)	40,264	33,889	33,952	40,822	37,221
Government Documents (volumes)	529,366	524,728	510,722	525,525	525,995
Media (units)	29,429	30,520	28,736	112,847	154,894

Library	Fiscal Years				
	2012	2013	2014	2015	2016
Usage					
Library Usage - Circulation					
Faculty	7,233	6,766	5,985	6,127	5,855
General	31,144	23,880	21,059	22,966	25,227
Other	971	1,336	193	139	133
Documents	0	1	5	17	0
Periodicals	74	14	4	2	2
Reserve	864	513	644	896	997
Special Collections	1,180	684	447	800	161
In Library Use (materials shelved)	13,632	10,425	10,741	6,599	8,152
Data Base Searches	2,226,220	3,110,868	2,252,734	2,324,769	2,477,730
Interlibrary Loan					
Borrowed	2,783	3,347	3,047	2,803	2,417
Loaned	6,480	6,821	6,886	6,105	7,984
Gate Count	432,396	415,580	386,541	358,002	365,018
Information Service to Groups					
Presentations	222	255	226	267	409
# of Persons Served	3,590	3,702	3,322	4,310	7,390

The Dean B. Ellis Library, centrally located in an eight-story building, is an educational center for the A-State community. The Library of Congress classification system is used to organize print books and media, and web-based catalogs provide access to the library's physical and online collections. Fifteen professional librarians and nineteen support staff provide a variety of library services to meet the information needs of the university, including off-campus access to web-based academic resources and acquiring materials in a wide range of formats. Reference and instruction librarians assist users in locating information and in using the library. The library also offers an active library and research skills instruction program which reaches numerous university classes. The library provides access to hundreds of online resource and data services, including more than 350,000 E-Books, via links on the library's web site. Materials that are not contained in the library's collection are accessible by interlibrary loan through the OCLC network.



Dean B. Ellis Library, Arkansas State University

Data Source: Dean B. Ellis Library, Arkansas State University
 Information Source: The Office of Institutional Effectiveness: web address: www.AState.edu/irp; email address: asuip@AState.edu

Student Costs - Tuition & Required Fees

Arkansas Universities

HISTORICAL ANNUAL TUITION & REQUIRED FEES Jonesboro Campus

Academic Year	Undergraduate				Graduate			
	Annual Tuition & Fees (Based on 15 Hour Load per Semester)		Per Credit Hour Tuition		Annual Tuition & Fees (Based on 9 Hour Load per Semester)		Per Credit Hour Tuition	
	Resident	Nonresident	Resident	Nonresident	Resident	Nonresident	Resident	Nonresident
2005-2006	\$5,440	\$12,145	\$142	\$366	\$3,947	\$8,879	\$180	\$454
2006-2007	5,710	12,760	149	384	4,145	9,329	189	477
2007-2008	6,010	13,390	154	400	4,370	9,770	196	496
2008-2009	6,370	14,290	163	427	4,640	10,436	208	530
2009-2010	6,370	14,290	163	427	4,640	10,436	208	530
2010-2011	6,640	14,860	170	444	4,820	10,850	216	551
2011-2012	6,934	12,238	177	354	5,030	9,073	225	449
2012-2013	7,180	12,610	181	362	5,198	9,338	230	460
2013-2014	7,510	13,120	187	374	5,432	9,716	238	476
2014-2015	7,720	13,480	192	384	5,576	9,968	244	488
2015-2016	8,050	14,050	200	400	5,810	10,382	254	508
2016-2017	8,200	14,260	202	404	5,918	10,544	257	514

2016-2017 ANNUAL TUITION & REQUIRED FEES Universities in Arkansas

University	Resident		Nonresident	
	First-Time Freshmen Undergraduate (15 Hour Load)	Graduate (9 Hour Load)	First-Time Freshmen Undergraduate (15 Hour Load)	Graduate (9 Hour Load)
	Arkansas State University*	\$8,200	\$5,918	\$14,260
Arkansas Tech University**	8,280	5,958	14,850	10,890
Henderson State University***	8,186	5,928	15,026	10,878
Southern Arkansas Univ.**	8,256	5,940	11,916	8,370
Univ. of Arkansas-Fayetteville*	8,981	8,349	23,330	19,812
Univ. of Arkansas-Ft. Smith	6,731	7,805	15,041	11,999
Univ. of Arkansas-Little Rock**	8,673	7,063	20,928	14,353
Univ. of Arkansas-Monticello	7,210	6,300	13,060	10,710
Univ. of Arkansas-Pine Bluff***	6,713	4,831	12,743	9,367
Univ. of Central Arkansas	8,224	5,881	14,447	10,475

2016-2017 ANNUAL TUITION & REQUIRED FEES Other ASU Campuses

	Campuses				
	(Full-Time Based on 15 Hour Load per Semester)	ASUB	ASUMH	ASUN	ASUMS
Resident Tuition					
Full-Time Tuition	\$2,940	\$2,820	\$2,790	\$3,300	
Per Credit Hour Tuition	98	94	93	110	
Nonresident Tuition					
Full-Time Tuition	5,070	4,800	4,560	4,500	
Per Credit Hour Tuition	169	160	152	150	
Annualized Fees					
	540	660	540	580	

*NOTE: There is a higher per-credit-hour tuition for A-State courses in the Colleges of Business, Engineering, Nursing & Health Professions and Sciences & Mathematics. Differential tuition for non-resident, first-time and returning students prior to 2011.

**NOTE: ATU and SAU annual tuition and required fees include all or part of the athletic fee.

***NOTE: HSU annual tuition and required fees include a one-time \$20 transcript fee and a \$50 orientation fee for first-time students. Athletic fee is also included in annual tuition and fees.

NOTE: UAF has tuition rates and academic fees based on the college of enrollment. Calculations reflect the College of Business. A \$85 new student fee, a \$55 FYE fee and a \$22 ID card fee for first-time freshmen are included in the annual tuition and fees.

NOTE: UALR has tuition rates and academic fees based on the college of enrollment. Calculations reflect the College of Business. A \$40 orientation fee for first-time undergraduate students is included in the tuition and fees.

NOTE: UAPB annual tuition and required fees include a one-time \$37 matriculation fee for first-time students.

Information Source: The Office of Institutional Effectiveness: web address: www.AState.edu/irp; email address: asuirp@AState.edu

Student Costs - Residence Life

Jonesboro Campus

HOUSING OCCUPANCY

Housing	Fall 2016 Capacity	Occupancy at Beginning of Fall Semester				
		2012	2013	2014	2015	2016
Residence Halls						
Arkansas Hall	362	338	263	348	286	325
Greek Village	105	--	105	103	104	104
Kays Hall	455	445	395	420	404	392
Living Learning Communities (Honors, ROTC & STEM)	423	306	405	402	414	396
Northpark Quads	836	764	807	770	800	789
University Hall	300	295	293	295	289	284
Total Residence Halls	2,481	2,148	2,268	2,338	2,297	2,290
Collegiate Park Apartments	326	316	313	298	320	308
Red Wolf Den Apartments	182	187	183	182	186	146
Village Apartments	161	155	159	164	148	140
Married Student Houses	16	36	39	41	35	13
Total All Housing	3,166	2,842	2,962	3,023	2,986	2,897

2016-2017 MEAL PLANS

	Rates
5 Day + 250	\$1,635
5 Day + 300	1,660
7 Day + 200	1,635
7 Day + 400	1,785
105 Meal Block + 700 >=Sophomore	1,540
150 Meal Block + 400 >=Sophomore	1,490
150 Meal Block + 500 >=Sophomore	1,570
All Flex Plan >=Junior	1,450

Meal plans are mandatory for all residence hall students. Students with the 5 Day plan may enter the Acansa Dining Hall unlimited times Monday through Friday. Students with the 7 Day plan may enter the Acansa Dining Hall unlimited times each day of the week. Students with a block meal plan may dine in the Acansa, up to the number of block meals purchased. The block plans also allow the holder to bring in guests. The number after the "+" indicates flex dollars. Flex dollars operate like a declining balance account that can be used at any of our dining venues, including Acansa Dining Hall, the Food Court, the Campus Store and Cafe a la Cart. The purchase of meal plans is dependent on year classification.

2016-2017 HOUSING COSTS PER SEMESTER

Residence Halls	Double	Single	Deluxe
Arkansas Hall	\$2,215	\$2,380	\$2,485
Greek Village	2,280	2,485	N/A
Kays Hall	2,215	2,380	N/A
Living Learning Communities (LLC)			
LLC Honors (Bldg. 1-3)	2,260	2,420	N/A
LLC Honors (Bldg. 4)	2,280	2,485	N/A
LLC ROTC	N/A	2,225	2,250
LLC STEM	N/A	2,225	2,250
Northpark Quads (Bldg. 1-2)	N/A	2,640	N/A
Northpark Quads (Bldgs. 3-5)	N/A	2,485	N/A
University Hall	2,215	2,380	2,485

Apartments	Collegiate Park	Red Wolf Den	Village
1 Bed / 1 Bath	N/A	N/A	\$2,890
2 Bed / 2 Bath	\$2,785	N/A	N/A
2 Bed / 1 Bath	2,550	\$2,640	3,415
2 Bed w / washer dryer hookup	N/A	N/A	3,570
3 Bed	N/A	2,525	3,880
4 Bed Townhouse	2,495	N/A	N/A
4 Bed Flat	2,460	2,555	N/A

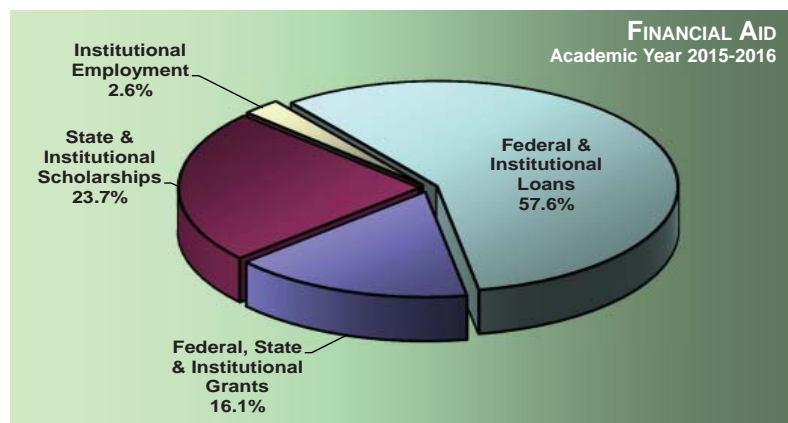
Financial Aid

Jonesboro Campus - By Academic Year

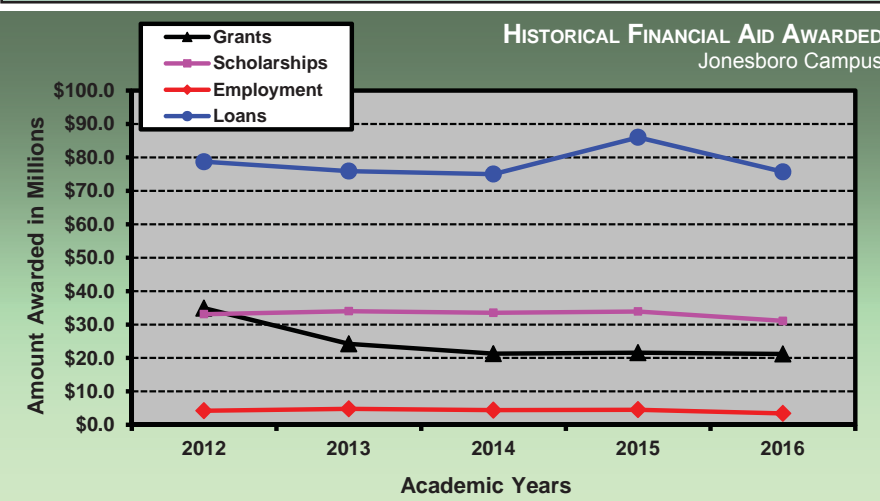
Financial aid is available to Arkansas State University students from a variety of sources. Not only can students obtain federal aid, state aid and privately funded scholarships, but A-State also offers several types of institutional scholarship packages to qualifying Arkansas residents and non-residents. The scholarships are primarily awarded based on ACT scores, GPA's and/or academic achievement. Institutional scholarships available include the following: Arkansas Promise; A-State Scholar, Excellence Incentive Legacy, Leadership, Pride, and Spirit; Beyond Boundaries; Transfer; and Out-of-State Scholarships. For more information visit A-State Financial Aid & Scholarships' web site.

FINANCIAL AID AWARDED - JONESBORO CAMPUS Academic Year 2015-2016

Aid Category	Unduplicated Number of Recipients	Amount of Awards
JONESBORO RECIPIENTS		
Federal, State, & Institutional Grants	5,380	\$21,174,089
State & Institutional Scholarships	4,583	31,106,168
Institutional Employment	442	3,369,516
Federal & Institutional Loans	8,267	75,667,207
Total Aid Awarded	11,381	\$131,316,980



Federal Aid Programs	
Work-Study Program	Stafford Student Loan (Subsidized & Unsubsidized)
Parent Loan (Undergraduate Students)	Supplemental Educational Opportunity Grants
Pell Grants	
Perkins Student Loan	
State Programs	
Arkansas Academic Challenge Scholarship	Minority Teachers Scholarship
GO! Opportunities Grant	Nurse Educator Loan
Governor's Distinguished Scholarship	Second Effort Scholarship
Law Enforcement Dependent's Scholarship	State Grants
MIA/KIA Dependents Scholarship	State Teacher Education Program
Military Dependents Scholarship	Teacher Opportunity Program
Minority Masters Fellows Program	Workforce Improvement Grant
University Aid Programs	
Arkansas Promise	A-State Spirit
A-State Excellence	A-State Leadership
A-State Pride	Beyond Boundaries
A-State Scholar	Out-of-State Scholarship

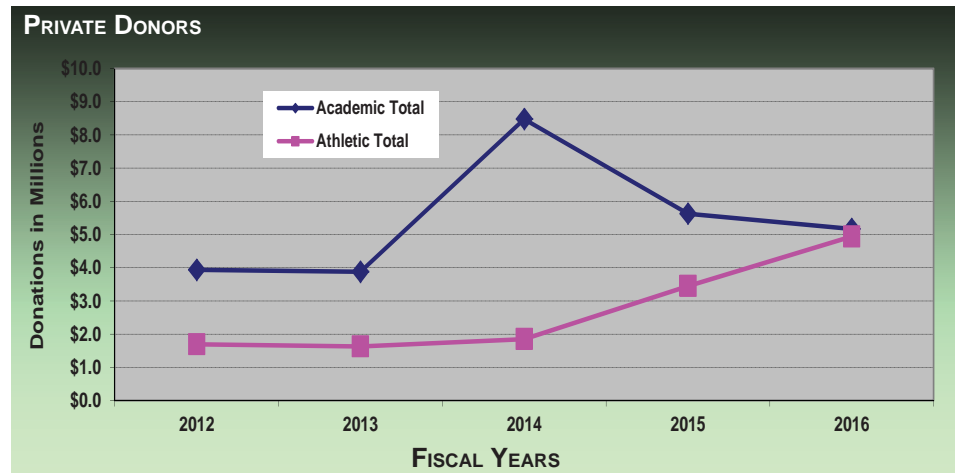
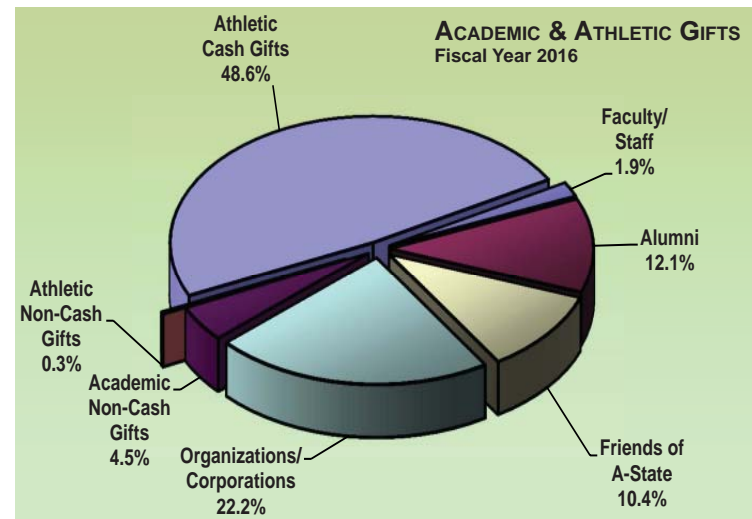


*NOTE: Data represents only the financial aid processed through A-State.
Data Source: Financial Assistance to Students in Institutions of Higher Education
Information Source: The Office of Institutional Effectiveness: web address: www.AState.edu/irp; email address: asuipr@AState.edu

Arkansas State University Donors

Jonesboro Campus

Source of Donation	Fiscal Years				
	2012	2013	2014	2015	2016
Academic Gifts					
Faculty/Staff	\$140,121	\$231,245	\$183,638	\$188,717	\$190,409
Alumni	704,681	932,264	2,188,469	2,975,723	1,219,065
Friends of A-State	457,253	349,204	456,006	494,524	1,052,784
Organizations/Corp.	2,565,247	1,644,135	5,511,239	1,895,337	2,247,464
Non-Cash Gifts	66,164	721,813	139,783	70,428	459,192
Academic Total	\$3,933,465	\$3,878,661	\$8,479,134	\$5,624,730	\$5,168,914
Athletic Gifts					
Cash Gifts	\$1,689,465	\$1,598,887	\$1,785,353	\$3,435,844	\$4,912,756
Non-Cash Gifts	0	26,098	63,426	9,349	26,081
Athletic Total	\$1,689,465	\$1,624,985	\$1,848,779	\$3,445,193	\$4,938,838
Grand Total	\$5,622,931	\$5,503,646	\$10,327,912	\$9,069,923	\$10,107,752



Private donor support enables Arkansas State University to attract and retain the highest quality students. Citizens of Northeast Arkansas communities have historically provided generous donor support. Additionally, private support endows numerous A-State scholarships each year. Scholarships help to keep the brightest students in Arkansas, and scholarships are more necessary now than ever. An endowed scholarship can be established for \$25,000, or an annual gift may be provided to fund one or more scholarships. Scholarships are currently available in virtually every discipline.

Data Source: Office of Development, Arkansas State University
 Information Source: The Office of Institutional Effectiveness: web address: www.AState.edu/irp; email address: asuipr@AState.edu



Employees

Office of Institutional Effectiveness

System Employee Summary

Jonesboro, Beebe, Mtn. Home, Newport & Mid-South - Fall 2016

Full-Time Employees by Category

	Campuses					Total
	A-State	ASUB	ASUMH	ASUN	ASUMS	
Postsecondary Teachers	500	118	45	73	46	782
Archivists, Curators & Museum Technicians	8	0	0	0	0	8
Librarians & Library Technicians	25	6	2	2	1	36
Student, Academic & Other Educational Services Occupations	45	22	5	5	1	78
Management Occupations	210	33	16	27	22	308
Business & Financial Occupations	256	21	1	5	8	291
Computer, Engineering & Science Occupations	65	9	5	5	7	91
Community Service, Social Service, Legal, Arts, Design, Sports & Media Occupations	65	18	3	3	24	113
Healthcare Practitioners & Technical Occupations	10	2	0	0	0	12
Service Occupations	99	9	8	13	10	139
Office & Administrative Support Occupations	151	47	24	28	27	277
Natural Resources, Construction & Maintenance Occupations	102	15	3	4	0	124
Production, Transportation & Material Moving Occupations	5	1	0	1	0	7
Total Employees	1,541	301	112	166	146	2,266
By Gender						
Male	636	122	43	63	58	922
Female	905	179	69	103	88	1,344
By Ethnicity						
African American	162	12	0	11	43	228
American Indian/Alaskan Native	8	6	0	0	0	14
Asian American	44	3	0	2	3	52
Hispanic American	24	3	3	0	0	30
Native Hawaiian/Pacific Islander	1	2	0	0	0	3
Two or More Races	18	0	0	0	0	18
White American	1,254	275	109	151	100	1,889
Other Ethnicity**	30	0	0	2	0	32
Total Known Minorities***	257	26	3	13	46	345

**Other Ethnicity includes internationals and unknown.

***Minorities include African American, American Indian/Alaskan Native, Asian American, Hispanic American, Native Hawaiian/Pacific Islander, and those reporting two or more races.

Data Source: Faculty/Staff Information

Information Source: The Office of Institutional Effectiveness: web address: www.AState.edu/irp; email address: asuip@AState.edu

Full-Time Instructional Faculty

Jonesboro Campus - Fall 2012 to Fall 2016

Total Full-Time Instructional Faculty										
	Fall Semesters					Percentage of Faculty Total				
	2012	2013	2014	2015	2016	2012	2013	2014	2015	2016
Total Full-Time Faculty	487	505	502	502	498					
9/10 Month Faculty	415	440	439	440	433	85.2%	87.1%	87.5%	87.6%	86.9%
11/12 Month Faculty	72	65	63	62	65	14.8%	12.9%	12.5%	12.4%	13.1%
Faculty by Gender										
Male	240	245	237	234	233	49.3%	48.5%	47.2%	46.6%	46.8%
Female	247	260	265	268	265	50.7%	51.5%	52.8%	53.4%	53.2%
Faculty by Ethnicity										
African American	28	34	32	33	33	5.7%	6.7%	6.4%	6.6%	6.6%
American Indian/Alaskan Native	3	3	2	2	3	0.6%	0.6%	0.4%	0.4%	0.6%
Asian American	28	34	27	32	32	5.7%	6.7%	5.4%	6.4%	6.4%
Hispanic American	4	7	8	8	10	0.8%	1.4%	1.6%	1.6%	2.0%
Native Hawaiian/Pacific Islander	0	0	0	1	1	0.0%	0.0%	0.0%	0.2%	0.2%
Two or More Races	8	8	18	16	4	1.6%	1.6%	3.6%	3.2%	0.8%
White American	400	396	392	395	396	82.1%	78.4%	78.1%	78.7%	79.5%
Total Known Minorities*	71	86	87	92	83	14.6%	17.0%	17.3%	18.3%	16.7%
Faculty by Age										
Under 33	34	50	49	41	44	7.0%	9.9%	9.8%	8.2%	8.8%
33 to 40	76	92	89	98	101	15.6%	18.2%	17.7%	19.5%	20.3%
41 to 48	105	101	98	100	93	21.6%	20.0%	19.5%	19.9%	18.7%
49 to 56	112	108	110	100	101	23.0%	21.4%	21.9%	19.9%	20.3%
57 & Older	160	154	156	163	159	32.9%	30.5%	31.1%	32.5%	31.9%
Faculty Who Possess Doctorates and/or Terminal Degrees										
Total Full-Time Faculty	334	339	339	345	329	68.6%	67.1%	67.5%	68.7%	66.1%
<i>Percent Tenure & Tenure-Track Faculty Who Possess Doctorates and/or Terminal Degrees</i>						89.3%	87.7%	89.3%	89.1%	91.8%

*NOTE: Minorities include African American, American Indian/Alaskan Native, Asian American, Hispanic American, Native Hawaiian/Pacific Islander and those reporting two or more races.
 Data Source: Faculty/Staff Information
 Information Source: The Office of Institutional Effectiveness: web address: www.AState.edu/irp; email address: asuirp@AState.edu

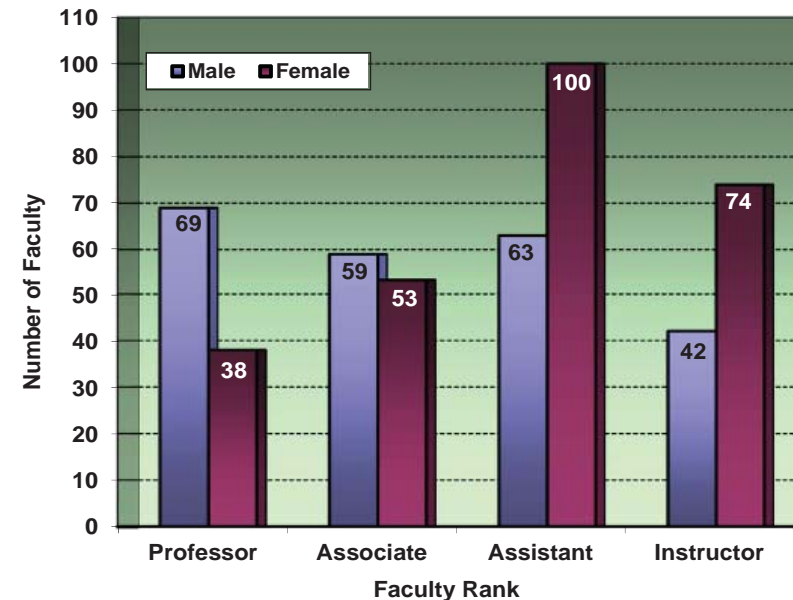
Full-Time Instructional Faculty Statistics

Jonesboro Campus

HISTORICAL FULL-TIME INSTRUCTIONAL FACULTY BY RANK

Faculty Rank	Fall Semesters				
	2012	2013	2014	2015	2016
Professor	104	105	100	105	107
Associate	120	132	124	121	112
Assistant	154	162	160	162	163
Instructor	109	106	118	114	116
All Ranks	487	505	502	502	498

FULL-TIME INSTRUCTIONAL FACULTY BY RANK & GENDER
Fall 2016

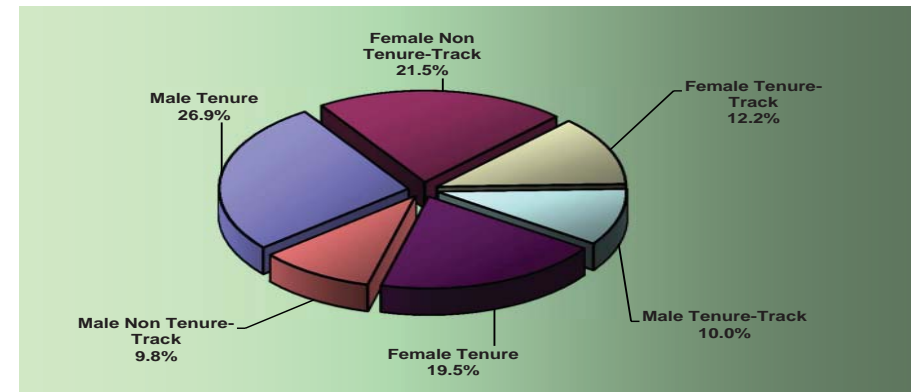


*NOTE: Supplemental faculty include adjuncts, graduate teaching assistants, administrative staff and high school teachers.
Data Sources: Salaries, Tenure and Fringe Benefits of Full-Time Instructional Faculty Surveys
Information Source: The Office of Institutional Effectiveness: web address: www.AState.edu/irp; email address: asuipr@AState.edu

HISTORICAL SEMESTER CREDIT HOUR (SCH) PRODUCTION BY RANK

Faculty Rank	Fall Semesters				
	2012	2013	2014	2015	2016
Number & Percentage of SCH Production					
Professor	24,881 16.9%	25,258 17.4%	23,254 16.3%	24,516 17.2%	23,435 16.0%
Associate	27,018 18.4%	29,097 19.9%	26,967 18.9%	25,883 18.1%	28,003 19.2%
Assistant	31,463 21.4%	32,585 22.4%	30,859 21.6%	32,613 22.8%	34,309 23.5%
Instructor	32,723 22.3%	33,237 22.8%	34,605 24.2%	33,804 23.7%	32,376 22.2%
Supplemental Faculty*	30,736 20.9%	25,384 17.4%	27,119 19.0%	25,968 18.2%	27,942 19.1%
Total SCH Production	146,821	145,563	142,804	142,784	146,065

TENURE STATUS OF FULL-TIME INSTRUCTIONAL FACULTY BY GENDER
Fall 2016



Full-Time Instructional Faculty Salaries

Jonesboro Campus

HISTORICAL A-STATE MEAN FACULTY SALARIES*

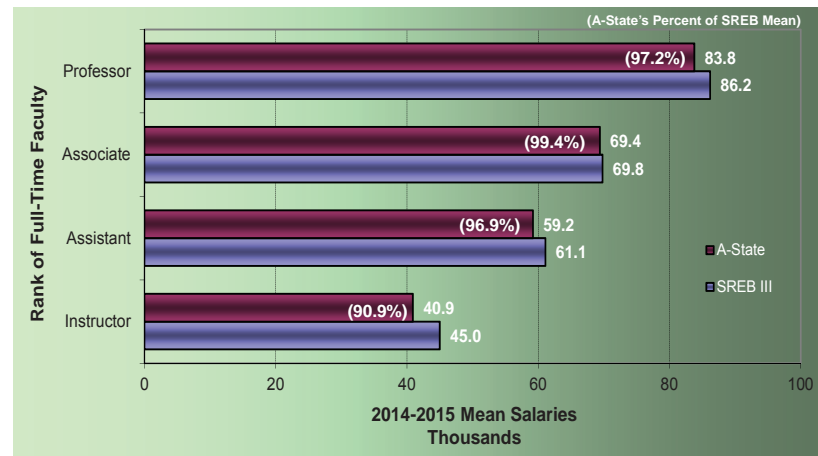
Fall Semesters	Rank of Full-Time Faculty			
	Professor	Associate	Assistant	Instructor
2007	\$74,928	\$61,489	\$53,029	\$37,160
2008	75,343	61,720	53,637	36,664
2009	75,475	60,146	53,809	36,538
2010	73,652	60,171	54,918	34,966
2011	78,155	62,546	56,764	36,468
2012	81,892	65,936	56,657	38,045
2013	83,710	68,534	57,827	40,638
2014	83,817	69,449	59,230	40,880
2015	83,494	69,967	58,639	39,578
2016	84,526	70,253	60,306	40,754
Percent Change 2007-2016	12.8%	14.3%	13.7%	9.7%

2014-2015 MEAN FACULTY SALARIES* FOR ARKANSAS PUBLIC 4-YEAR INSTITUTIONS

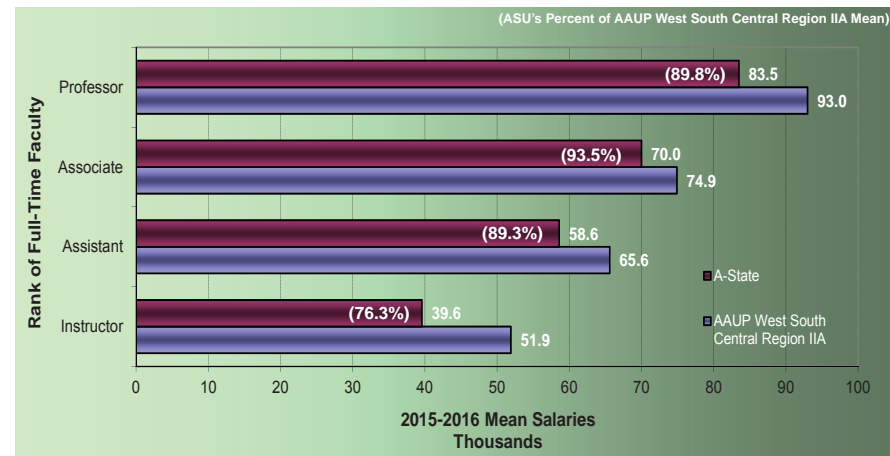
Institution	SREB & AAUP Classifications		Rank of Full-Time Faculty			
			Professor	Associate	Assistant	Instructor
UAF	I	I	\$113.8	\$82.4	\$76.8	\$48.3
UALR	II	IIA	90.5	69.1	60.8	48.0
ASU	III	IIA	83.8	69.4	59.2	40.9
SAUM	IV	IIB	80.5	61.6	53.0	41.6
UCA	III	IIA	79.9	66.2	58.2	49.8
ATU	III	IIB	75.5	61.8	51.9	41.5
UAM	V	IIB	68.0	55.0	48.0	40.4
UAPB	VI	IIB	61.3	54.4	49.0	38.1
HSU	IV	IIA	59.7	52.3	46.7	39.3

(Salaries in Thousands)

2014-2015 MEAN FACULTY SALARIES* COMPARING A-STATE TO SREB III INSTITUTIONS**



2015-2016 MEAN FACULTY SALARIES* COMPARING A-STATE TO AAUP REGIONAL IIA INSTITUTIONS***



*NOTE: Salaries reported as 11-12 month appointments have been converted to 9-10 month equivalents by reducing the reported amounts by 2/11.

**NOTE: SREB III consists of institutions in Alabama, Arkansas, Florida, Georgia, Kentucky, Louisiana, Maryland, Mississippi, North Carolina, Oklahoma, South Carolina, Tennessee, Texas, Virginia and West Virginia.

***NOTE: Institutions classified as AAUP West South Central Region Master's IIA include institutions in Arkansas, Louisiana, Oklahoma and Texas which confer less than 30 doctoral degrees per year.

Data Sources: Salaries, Tenure and Fringe Benefits of Full-Time Instructional Faculty Surveys; AAUP Faculty Compensation Surveys; SREB and Academic

Information Source: The Office of Institutional Effectiveness: web address: www.AState.edu/irp; email address: asurp@AState.edu

Full-Time Staff Statistics

Jonesboro Campus

Jonesboro Campus Full-Time Staff

	Fall Semesters					Percentage of Total by Category				
	2012	2013	2014	2015	2016	2012	2013	2014	2015	2016
Archivists, Curators & Museum Technicians	7	7	6	8	8	0.6%	0.6%	0.6%	0.7%	0.8%
Librarians & Library Technicians	28	28	27	27	25	2.6%	2.6%	2.5%	2.5%	2.4%
Student & Other Educ. Serv.	50	46	33	36	45	4.6%	4.2%	3.1%	3.3%	4.2%
Management	206	209	190	197	210	18.9%	19.1%	17.9%	18.2%	20.2%
Business & Financial	237	237	252	272	256	21.8%	21.7%	23.8%	25.1%	24.6%
Computer, Eng. & Science	78	76	77	74	65	7.2%	7.0%	7.3%	6.8%	6.1%
Comm., Soc., Legal, Arts, Sports & Media	73	70	73	71	65	6.7%	6.4%	6.9%	6.6%	6.1%
Healthcare Practitioners & Technical Service	6	7	8	9	10	0.6%	0.6%	0.8%	0.8%	0.9%
Office & Administrative Support	102	109	105	111	99	9.4%	10.0%	9.9%	10.3%	9.3%
Natural Resources, Const. & Maint.	185	180	169	160	151	17.0%	16.5%	16.0%	14.8%	14.5%
Prod., Transportation & Material Moving	112	119	115	112	102	10.3%	10.9%	10.9%	10.4%	9.6%
Total Employees	1,089	1,093	1,059	1,082	1,041					
By Gender										
Male	430	426	412	408	401	39.5%	39.0%	38.9%	37.7%	38.5%
Female	659	667	647	674	640	60.5%	61.0%	61.1%	62.3%	61.5%
By Ethnicity										
African American	128	134	127	130	129	11.8%	12.3%	12.0%	12.0%	12.4%
American Indian/Alaskan Native	5	6	4	2	5	0.5%	0.5%	0.4%	0.2%	0.5%
Asian American	12	11	6	9	11	1.1%	1.0%	0.6%	0.8%	1.0%
Hispanic American	8	11	11	14	14	0.7%	1.0%	1.0%	1.3%	1.3%
Native Hawaiian/Pacific Islander	0	0	3	2	0	0.0%	0.0%	0.3%	0.2%	0.0%
Two or More Races	10	10	17	21	14	0.9%	0.9%	1.6%	1.9%	1.3%
White American	912	901	885	899	857	83.7%	82.4%	83.6%	83.1%	82.3%
Other Ethnicity*	14	20	6	5	11	1.3%	1.8%	0.6%	0.5%	1.0%
Total Known Minorities**	163	172	168	178	173	15.0%	15.7%	15.9%	16.5%	16.6%

*Other Ethnicity includes nonresident aliens and unknown.

**Minorities include African American, American Indian/Alaskan Native, Asian American, Hispanic American, Native Hawaiian/Pacific Islander and those reporting two or more races.

Data Sources: Faculty/Staff Information

Information Source: The Office of Institutional Effectiveness: web address: www.AState.edu/irp; email address: asuipr@AState.edu

